

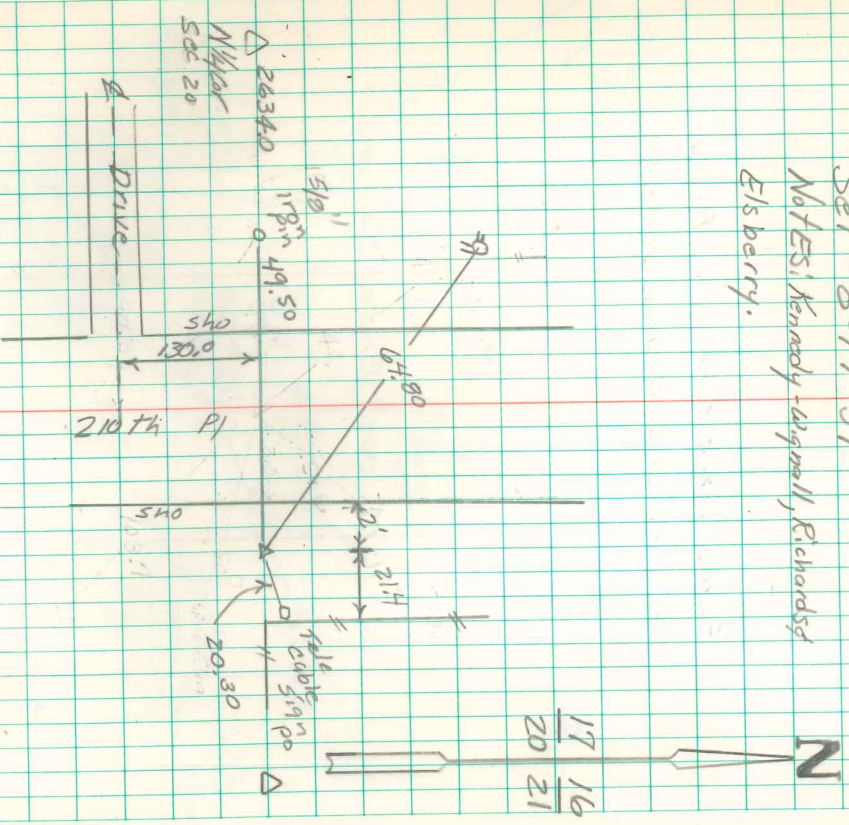
N.E. Cor sec 20-76-18

Set - 8-17-39

Notes: Kennedy, Wignell, Richards &

Elsberry.

17	16
20	21



Iron pin over cm is
Approx 2 East of East
Sho

Ret'd 10/9/99
Archie Davis 4/2/04

Found Sandstone 12" x 8" x 4 1/2"
ON END over small Stone.

Set cm. over Crackerly & Put
Stone on North side