

NAOMI ELLIS, RECORDER
 MARION COUNTY IOWA



P.O. Box 451, Oskaloosa, Iowa 52577-0451 Phone: (641)672-2526

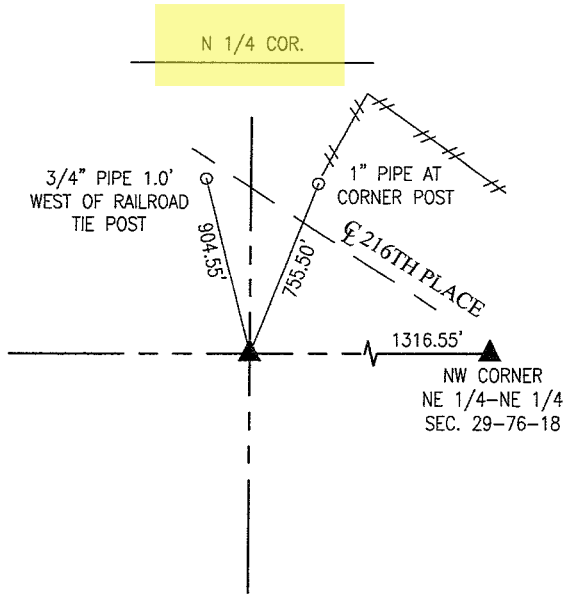
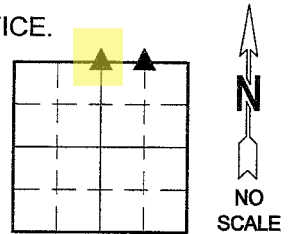
UNITED STATES PUBLIC LAND SURVEY CORNER CERTIFICATE OF

LAND SURVEY MONUMENTS SITUATED IN SECTION 29, TOWNSHIP 76, RANGE 18,
 OF THE FIFTH PRINCIPAL MERIDIAN, MARION COUNTY, IOWA.

PREVIOUSLY RECORDED IN SEE BELOW IN COUNTY RECORDER'S OFFICE.

MONUMENT DESCRIPTION AND REMARKS:

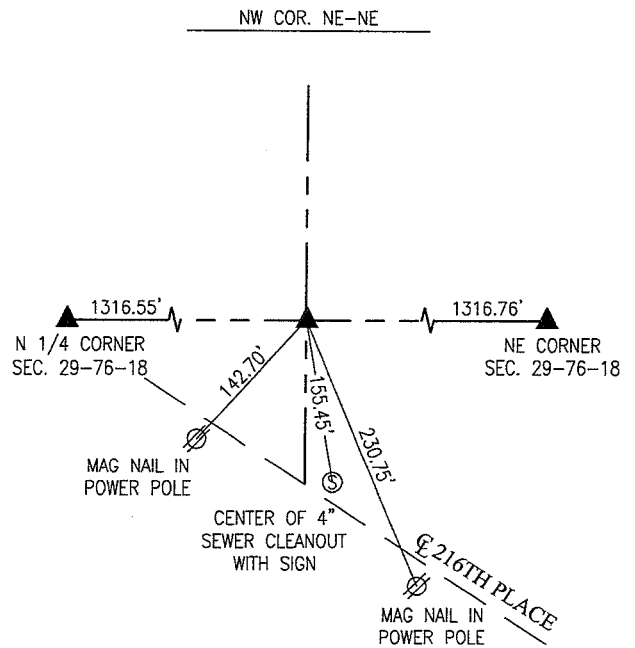
N 1/4 CORNER- BOOK 2001 PAGE 6410



APRIL 1985-PLS 6708
 FOUND LIMESTONE ABOVE WPA CONCRETE
 MONUMENT 24" DEEP. SET 5/8" REBAR ON
 EAST SIDE OF STONE.

SEPTEMBER 15, 2001-PLS 5594
 FOUND LIMESTONE ON TOP OF WPA CONCRETE
 MONUMENT 12" DEEP. FOUND 5/8" IRON PIN
 BY PLS 6708 ON EAST SIDE OF STONE.

NOVEMBER 2023-PLS 14416
 FOUND LIMESTONE 14" DEEP WITH IRON PIN
 ON EAST SIDE OF STONE. ADDED A 5/8"x30"
 REBAR ON THE NORTH SIDE OF LIMESTONE.



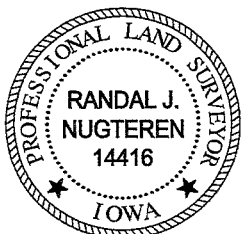
MAY 1985-PLS 6708
 SET 1" PIPE 18" DEEP ON LINE AND
 HALFWAY BETWEEN N 1/4 AND
 NE CORNER.

NOVEMBER 2023-PLS 14416
 FOUND 1" PIPE WITH 6708 CAP 14" DEEP.

I hereby certify that this land surveying document was prepared and the related survey work was performed by me or under my direct personal supervision and that I am a duly licensed Professional Land Surveyor under the laws of the State of Iowa.

LIST CORNERS TO BE INDEXED

CORNERS	SECTION	TOWNSHIP	RANGE
N 1/4 COR.	29	76	18
NW COR. NE-NE	29	76	18



Randal J. Nugteren January 18, 2024
 Randal J. Nugteren, P.L.S.
 License number: 14416
 My license renewal date is December 31, 2024

Pd # 700 Chuck - Ret G+AEN

Found Lime Rock 18"x12"x6"

Set C.M. over some Broken
Crookery

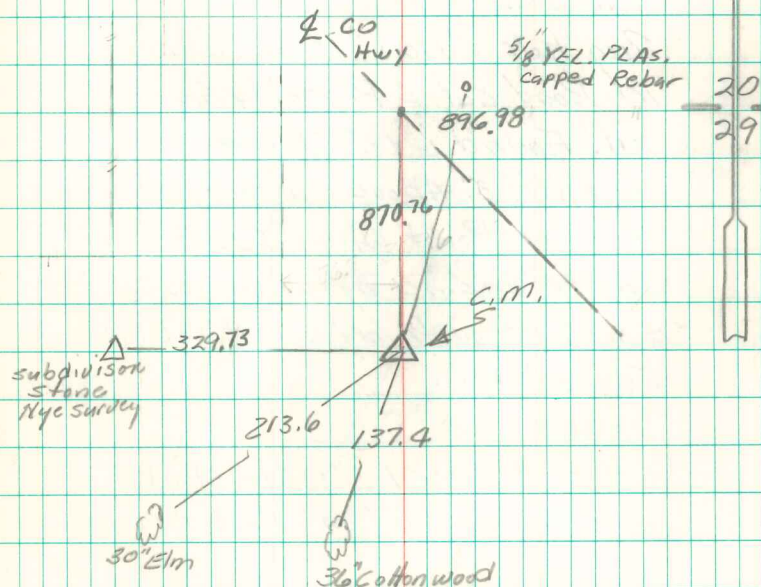
Put Lime Rock on top C.M.

N $\frac{1}{2}$ Cor 29-76-18

set 4-30-41

Notes: Kennedy

Party - Wells, Burrus & Glass



Found 6"x8"x16" Limestone w/ drill hole
in center painted red 5/8" yel. capped
rebar on E. side

Brian Morrissey 7/9/02