

KAREN SCHWANEBECK, RECORDER  
 MARION COUNTY IOWA

# UNITED STATES PUBLIC LAND SURVEY CORNER CERTIFICATE of

LAND SURVEY MONUMENTS SITUATED IN SECTION 01, TOWNSHIP 76 North, RANGE 18 West, of the Fifth Principal Meridian, Marion County, Iowa.

Monument Description & Remarks: NORTHWEST CORNER SECTION 01-76-18 Found 5/8" Rerod 2" deep. Monument was found using ties from Field Book 1 at the County Engineers Office.

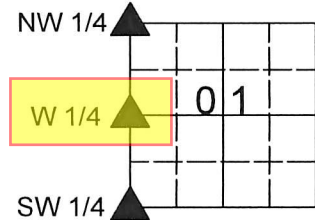
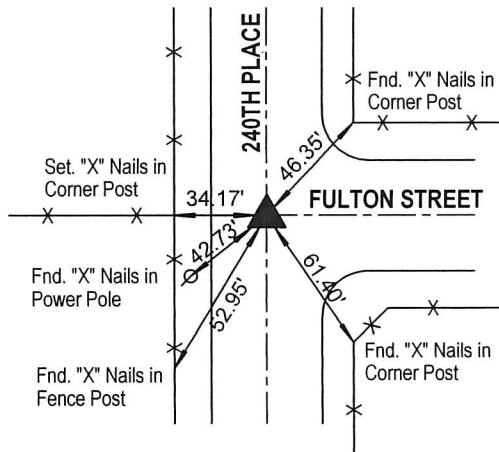
Monument Description & Remarks: WEST QUARTER CORNER SECTION 01-76-18 Found 1/2" Rerod 7" deep. Monument was found using ties from Field Book 2 at the County Engineers Office.

Monument Description & Remarks: SOUTHWEST CORNER SECTION 01-76-18 Found cut "X" and broken PK Nail. Monument was found using ties from Field Book 1 at the County Engineers Office.

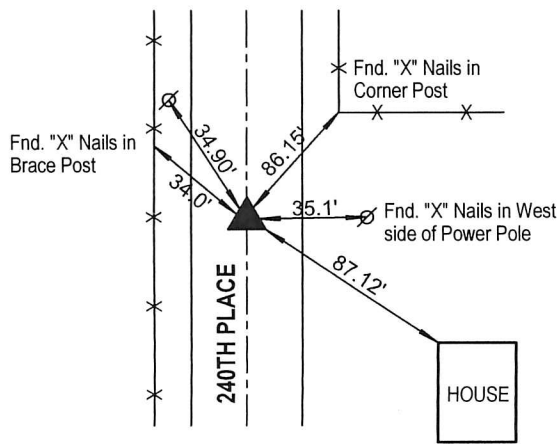
Recorded ties were not found for all three monuments therefore new ties were created.

## PLAN VIEW

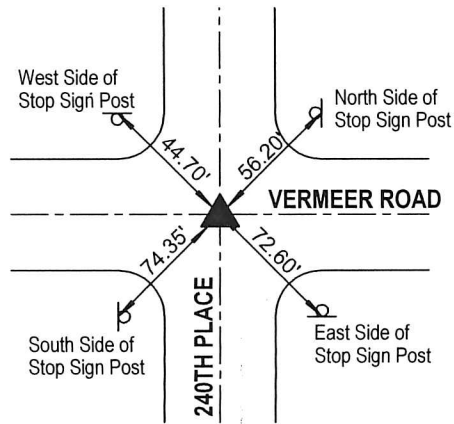
Section 01-T76N-R18W



**N.W CORNER**  
 Fnd. 5/8" Rerod (2" Deep)



**W. 1/4 CORNER**  
 Fnd. 1/2" Rerod (7" Deep)



**S.W CORNER**  
 Fnd. Cut "X" and Broken PK Nail

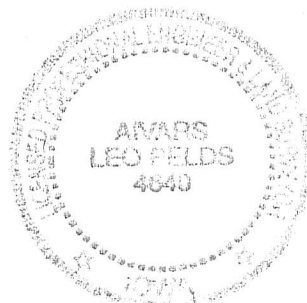
RL \$700 Cash - Per Pelds Engineering  
 N  
 ↑

I HEREBY CERTIFY THAT THIS LAND SURVEYING DOCUMENT WAS PREPARED AND THE RELATED WORK WAS PERFORMED BY ME OR UNDER MY DIRECT PERSONAL SUPERVISION AND THAT I AM A DULY LICENSED PROFESSIONAL LAND SURVEYOR UNDER THE LAWS OF THE STATE OF IOWA.

*A. Leo Pelds* 3-22-2016  
 AIVARS LEO PELDS, P.E. & L.S. IA. LIC. NO.4640 DATE

MY LICENSE RENEWAL DATE IS DECEMBER 31, 2017

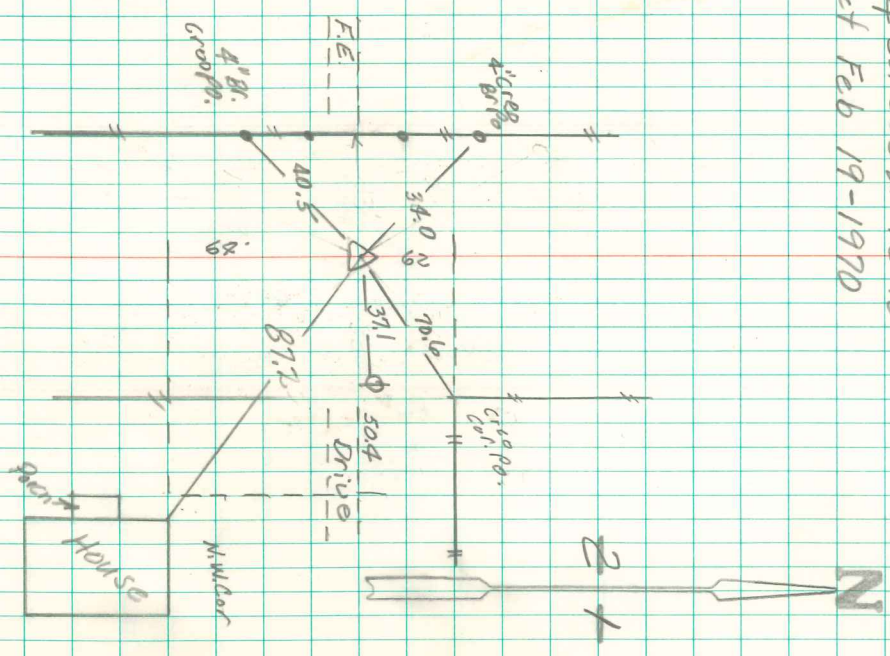
ADDITIONAL PAGES OR SHEETS COVERED BY THIS SEAL (NONE UNLESS INDICATED HERE):



Corners to be Indexed:			
Corner	Section	Twp	Range
NW Corner	01	76	18
NE Corner	02	76	18
W 1/4 Corner	01	76	18
E 1/4 Corner	02	76	18
SW Corner	01	76	18
SE Corner	02	76	18
NE Corner	11	76	18
NW Corner	12	76	18

PREPARED BY: A. LEO PELDS ENGINEERING CO. - 2323 DIXON STREET, DES MOINES, IOWA 50316 - PH. (515)265-8196

E4 Cor 5cc 2-76-18  
 5-1 Feb 19-1970



Found 5" Rebar 4" Deep  
 1 Sept, 1976  
 Nuyferer's outfield

Set c.m. 3" south of Iron Pipe  
 Put broken tile & Crockery at  
 Base of c.m.

E 1/4 Cor sec 2-76-18

Set - 12-7-39

Notes: Wignall

