

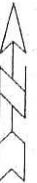
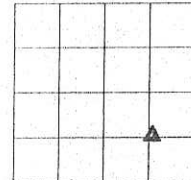
UNITED STATES PUBLIC LAND SURVEY CORNER CERTIFICATE  
OF

Land survey Monuments situated in Section 30, Township 76N, Range 18W, of the Fifth Principal Meridian, Marion County, Iowa.

Previously recorded in Bk 1, Pg 269 in County Recorders Office.

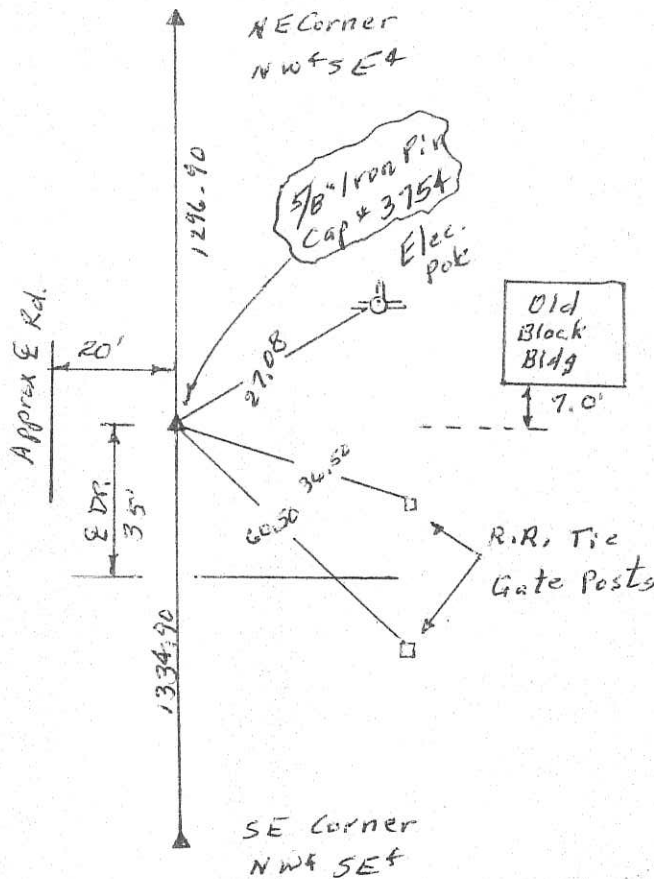
Show reason for preparing this certificate, the evidence and detailed procedures used in establishing the corner positions and monumentation found or placed

Monument Description and Remarks: Find 5/8" Iron Pin  
Cap # 3754. Set of new ties.



PLAN - VIEW

(Show a minimum of three reference ties to durable physical objects, relevant monuments and physical conditions that will enable recovery of the corner.)



I hereby certify that the survey work was completed and this land surveying document was prepared by me or under my direct personal supervision and that I am a duly licensed land surveyor under the laws of the state of Iowa

Signature: Abie C. Davis  
Abie C. Davis, P.E. & L.S.

Date: 10/30/10 Reg. No. 5594

My license renewal date is December 31, 2019

SEAL



List Corners to be Indexed  
Corners Section Twp Range

NE Corn 30 76N 18W  
SW 1/4 SE 4

SE Cor NW<sup>1</sup>/<sub>4</sub> SE<sup>1</sup>/<sub>4</sub>

Sec 30 76-18

