

UNITED STATES PUBLIC LAND SURVEY CORNER CERTIFICATE OF

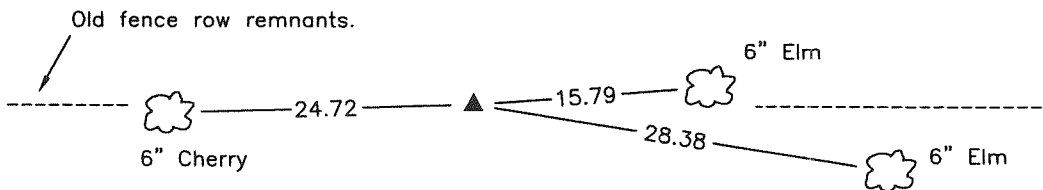
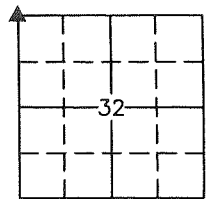
Land Survey Monuments situated in Section 32, Township 76N, Range 18W, of the Fifth Principal Meridian, Marion County, Iowa.
Previously recorded in --- in County Recorders Office.
(book, page, document number, etc.)

(Show reason for preparing this certificate, the evidence and detailed procedures used in establishing the corner positions and monumentation found or placed.)

Monument Description and Remarks: Found 4" x 4" WPA concrete monument 1.0 feet deep. Set 5/8" x 18" orange plastic capped rebar #7995 on south side of monument with sandstone on west side. Concrete monument and sandstone are as per County Engineer's Office section corner tie Bk. 1, P. 30 for Twp. 76-18.
This Certificate is being prepared due to a Plat of Survey in the E 1/2 of Sec. 32, recorded in Bk. 2014, P. 144.

PLAN VIEW

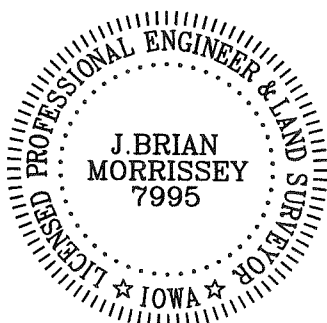
(Show a minimum of three reference ties to durable physical objects, relevant monuments and physical conditions that will enable recovery of the corner.)



Found 4" x 4" WPA concrete monument 1.0 feet deep with 15" x 14" x 3" sandstone laying flat on east side about 6" deep. Set 5/8" x 18" orange plastic capped rebar #7995 on south side of C.M. and placed sandstone on west side.

NW Cor., SEC. 32

NOTE: ALL TIES TO BRASS DISK UNLESS NOTED.



I hereby certify that this land surveying document was prepared and the related survey work was performed by me or under my direct personal supervision and that I am a duly Licensed Land Surveyor under the laws of the state of Iowa.

Signature: J. Brian Morrissey Date: 2/10/14
J. Brian Morrissey

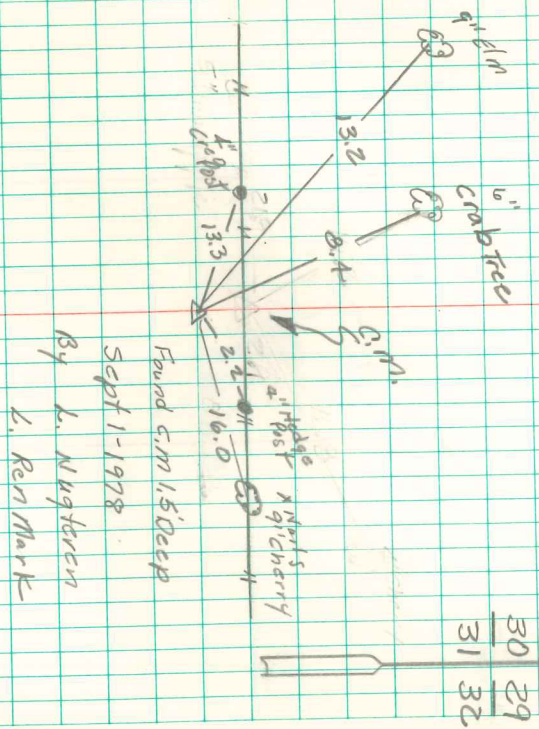
License number 7995.

My license renewal date is December 31, 2015

733-13-2

N.E. Cor sec 31-76-18
Set 11-15-39
Notes: W. gnall -

Found Sandstone 15" x 14" x 3"
Set C.M.



30 29
31 32