

UNITED STATES PUBLIC LAND SURVEY CORNER CERTIFICATE OF

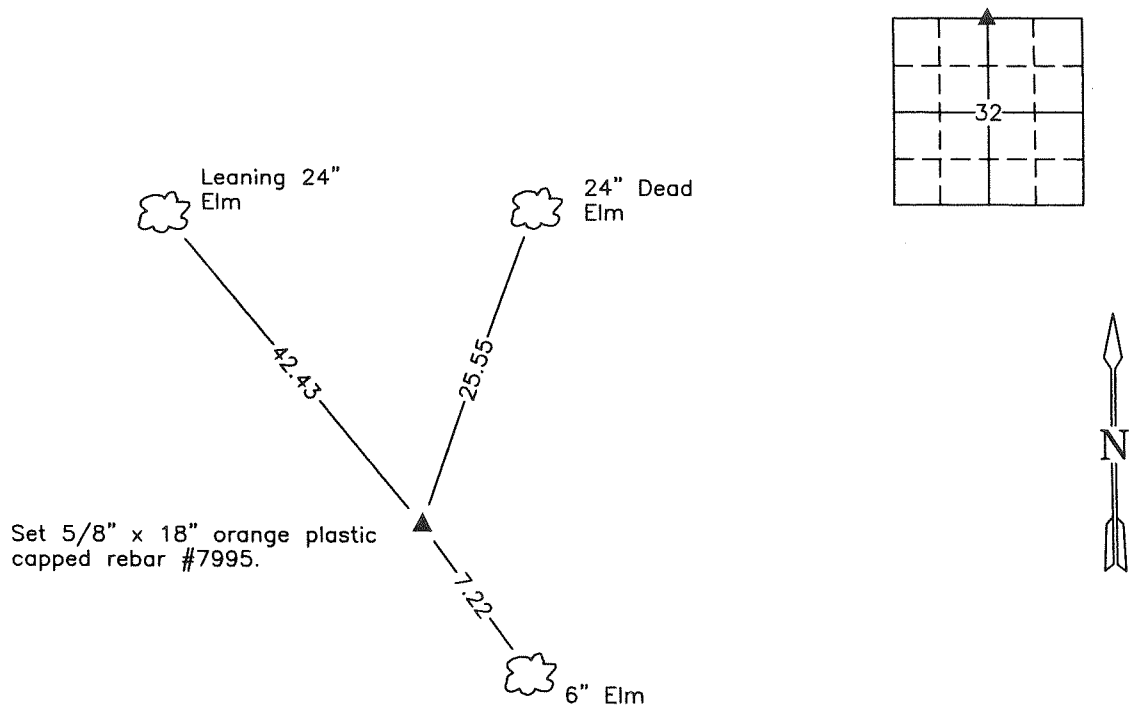
Land Survey Monuments situated in Section 32, Township 76N, Range 18W, of the Fifth Principal Meridian, Marion County, Iowa.
Previously recorded in _____ in County Recorders Office.
(book, page, document number, etc.)

(Show reason for preparing this certificate, the evidence and detailed procedures used in establishing the corner positions and monumentation found or placed.)

Monument Description and Remarks: Set 5/8" x 18" orange plastic capped rebar #7995 at midpoint and on line between found NE and NW Corners of Sec. 32. Set monument is in unstable soil and on a steep slope. This Certificate is being prepared due to a Plat of Survey in the E 1/2 of Sec. 32, recorded in Bk. 2014, P. 144.

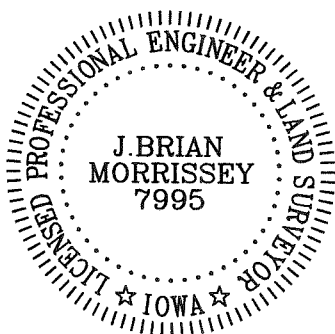
PLAN VIEW

(Show a minimum of three reference ties to durable physical objects, relevant monuments and physical conditions that will enable recovery of the corner.)



NW Cor. NE 1/4, SEC. 32

NOTE: ALL TIES TO BRASS DISK UNLESS NOTED.



I hereby certify that this land surveying document was prepared and the related survey work was performed by me or under my direct personal supervision and that I am a duly Licensed Land Surveyor under the laws of the state of Iowa.

Signature: J. Brian Morrissey Date: 2/10/14
J. Brian Morrissey

License number 7995.

My license renewal date is December 31, 2015

the Point indicated by line & Proportional distances from south & From West Shows this corner to be on the steep slope of a sandstone cliff.

Found the Elm bearing tree, recorded by Dep. Sur N.S. Watkins, recently saved down & found decayed stump of white Walnut tree of the Point indicated, by measuring from these stamps the recorded distances & bearings, we dug thru the soil which had slid from above, but found no positive evidence of corner.

Reestablished corner as above stated
Lowered broken earthenware & Iron Pin in Place.

Set C.M. over top flush with surface.

N¹/₄ Cor 32-76-18
Set Feb. 13-41
Notes: Nardell
Raty - Frazier & Barker

531.0 N. of S¹/₄ cor sec 32

