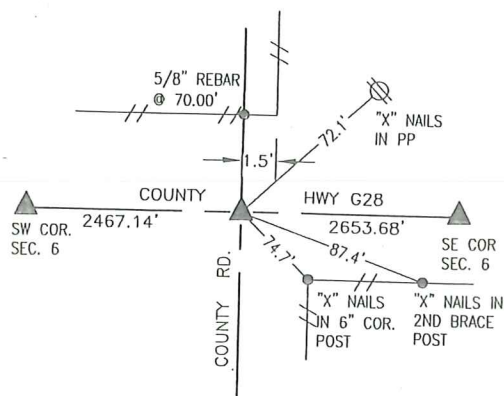


S 1/4 COR

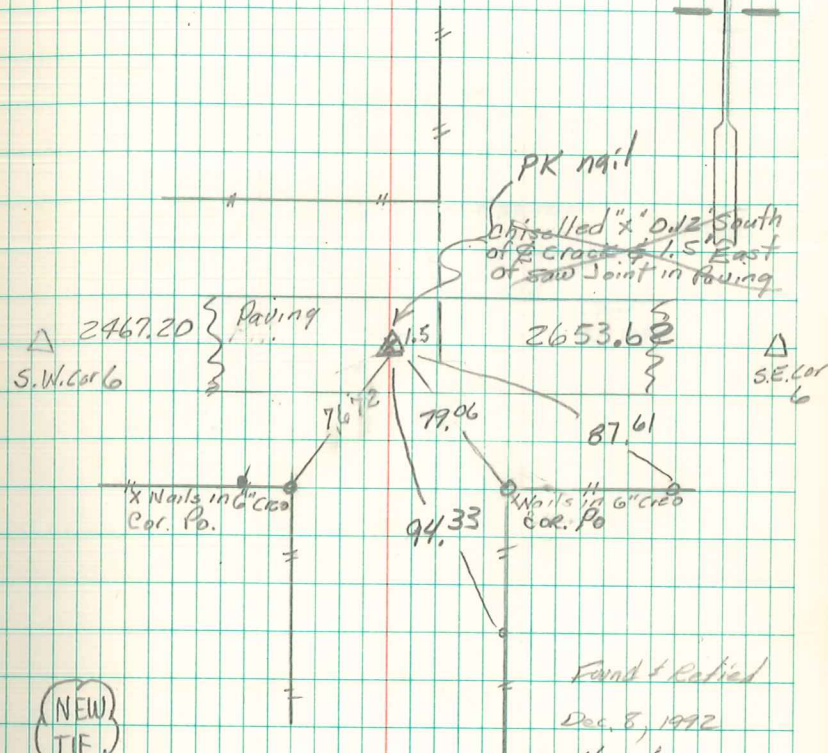


DEC. 8, 1992 - LS 6708
 FOUND CHISELLED "X" 0.12' SOUTH OF CL CRACK
 1.5' EAST OF SAW JOINT IN PAVING. CORNER
 ESTABLISHED IN 1975 ON LINE & PROPORTIONATE
 DISTANCE BETWEEN NW & NE CORNER OF SEC. 7.

NOVEMBER 2011
 COUNTY ROAD HAS BEEN RESURFACED. SET MAG
 NAIL IN ASPHALT ON LINE BETWEEN SE AND SW
 CORNERS OF SEC. 6 AT RESPECTIVE DISTANCES
 NOTED ON 1992 SURVEYS.

5 1/4 Cor. Sec 6-76-18
 (Estab. Cor) set on Line & Proportionate
 Distances S.E. Cor 6 & S.W. Cor 6-76-18

By Nugteren, Campbell & Johnson
 of Garden Eng. on Oct 21-1975



Found & Relied
 Dec. 8, 1992
 #29/06 B. Morrissey