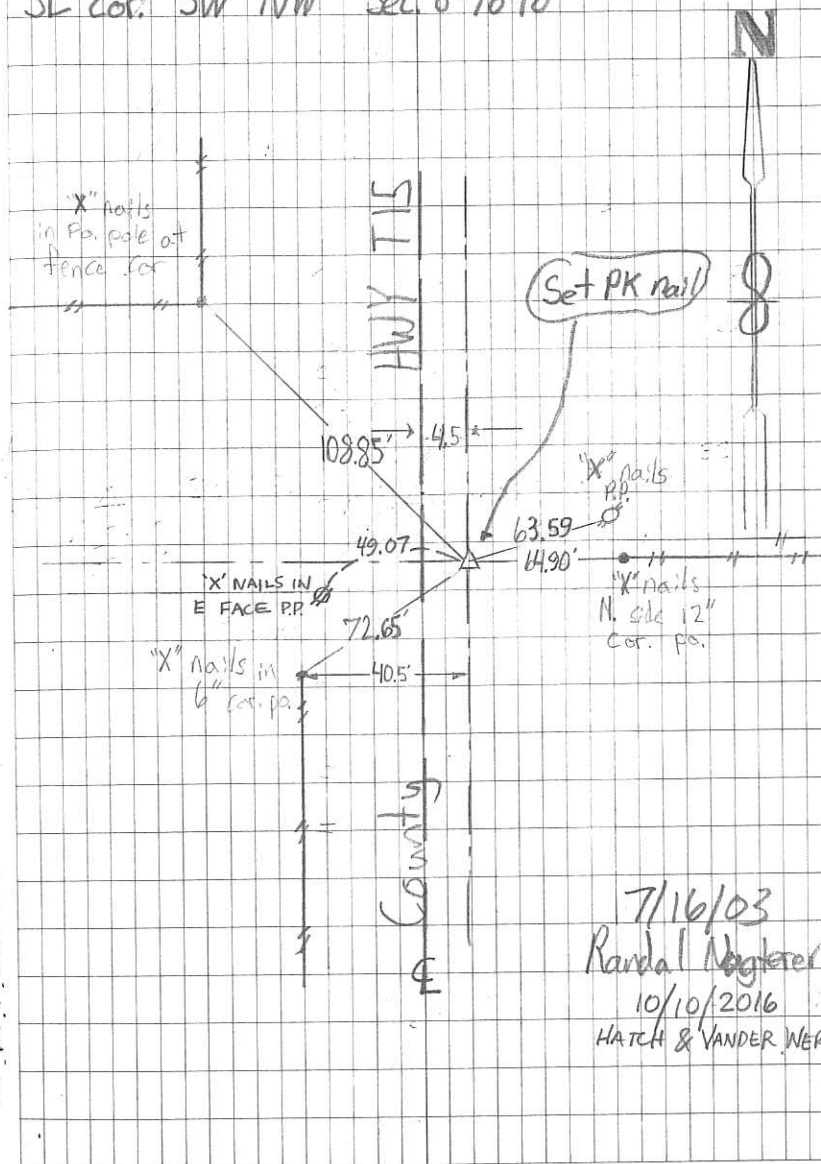


April 1987 - Established cor. at midpt. of line between the W⁴ cor. & center of Sec. 8. Set PK nail in Asphalt 4.5' E. of centerline Join +

July 2003 - Fnd. hole in Asphalt over magnetic spull 4.5' E. of centerline. Set PK nail in hole. Distance N. to NE cor. SW⁴ NW⁴ matches 1987 Dimension w/in 0.05'

Oct. 2016 - RETIED & RESET STONE DUE TO ASPHALT OVERLAY PROJECT. SET W/ IOWA RTN GPS STATE PLANE SOUTH COORDINATES.

SE cor. SW⁴ NW⁴ Sec. 8-76-18



April 1987 - Established cor. at midpt. of line between the Wth cor. & center of Sec. 8. Set PK nail in Asphalt 4.5' E. of centerline. Joint

July 2003 - Fnd. hole in Asphalt over magnetic spull 4.5' E. of centerline. Set PK nail in hole. Distance N. to NE cor. SWth NWth matches 1987 Dimension w/m 0.05'

SE cor. SWth NWth Sec. 8-76-18

