

Prepared By: **Johnstone & Associates**, 116 West 4th Street South, P.O. Box 903, Newton, Iowa 50208 - Phone: (641) 787-9600

## United States Public Land Survey Corner Certificate

of

Land Survey Monuments situated in Section 4, Township 76 North, Range 18 West, of the 5th Principal Meridian, Marion County, Iowa. E 1/4 Corner previously recorded in Book 1, Page 36, SE Corner previously recorded in Book 1, Page 85

### Monument Description and Remarks:

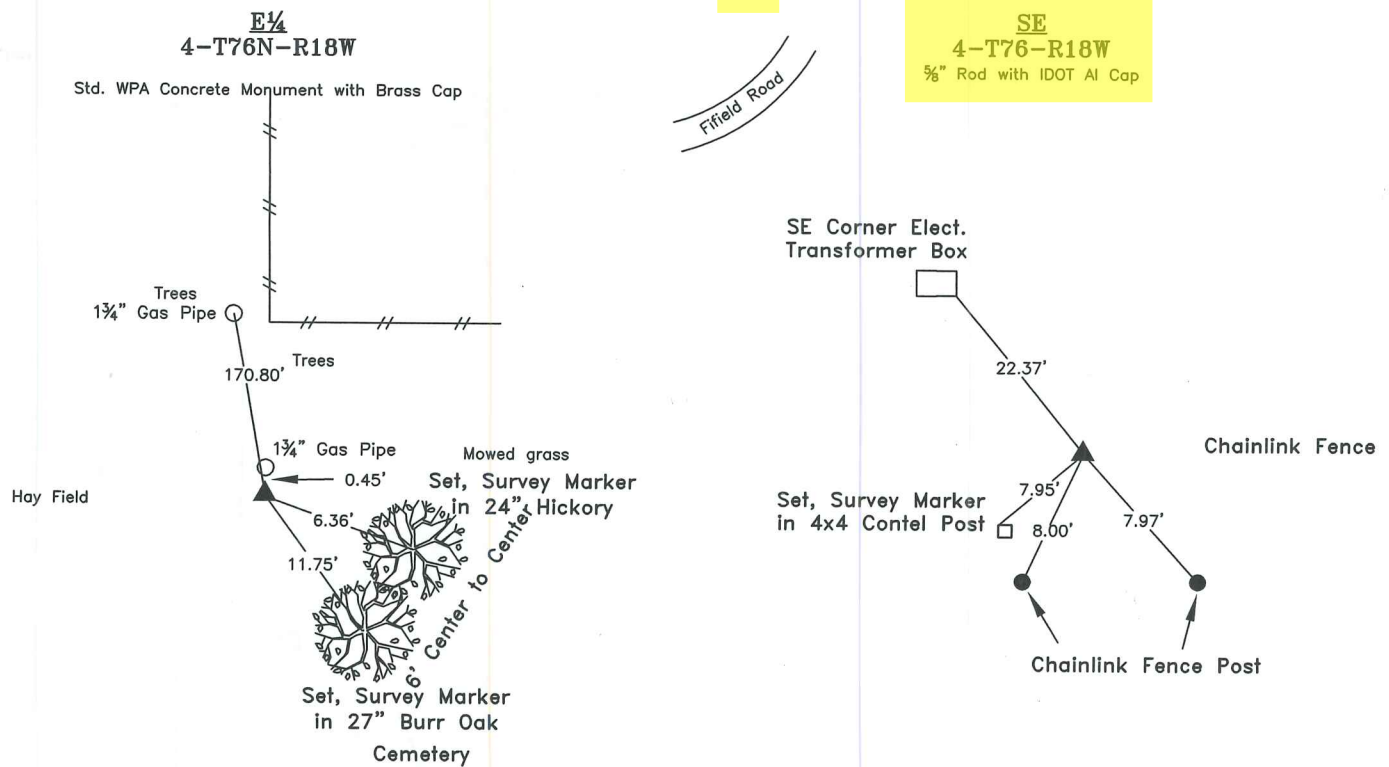
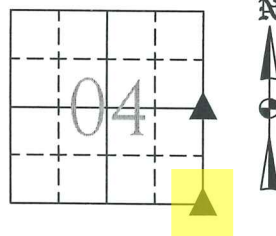
East 1/4 Corner - Corner previously recorded as Conc. Mon. Corner Recovery - found 3 listed ties, swung arcs and swept intersection area with metal detector. Found Standard WPA Concrete Monument with Brass Cap 1" deep with 1 3/4" pipe on North side. Corner accepted and took ties as shown below.

Southeast Corner - Corner previously recorded as 5/8" Rod with IDOT Al Kap RLS No. 6923. Corner Recovery - all ties were missing. Swept general area with metal detector, found 5/8" rod with IDOT Al Cap. Corner accepted and took ties as shown below.

This Corner Certificate is being prepared because the recorded ties have changed and the Monuments were recovered for a Survey in the SE 1/4 of the SE 1/4.

### Plan View

No Scale



I hereby certify that this land surveying document was prepared and the related survey work was performed by me or under my direct personal supervision and that I am a duly Licensed Professional Land Surveyor under the laws of the State of Iowa.

*Craig R. Johnstone*

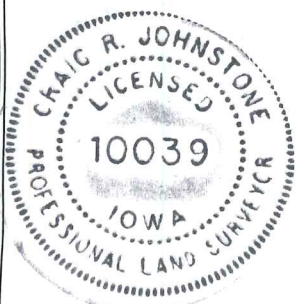
10 Oct 2013

Craig R. Johnstone, P.L.S.  
Iowa License No. 10039  
My License Renewal Date is: 31 December 2014

This Certification  
Covers this Sheet Only.

#### List of Corners to be Indexed:

Corners	Section	Township	Range
E 1/4	4	76	18
W 1/4	3	76	18
SE	4	76	18
SW	3	76	18
NE	9	76	18
NW	10	76	18



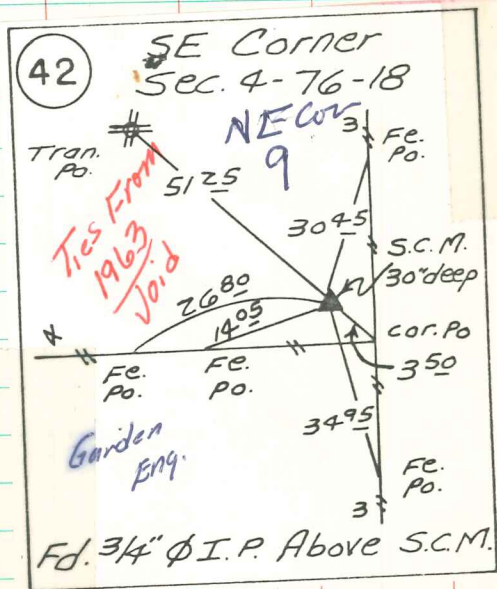
**Johnstone & Associates**  
Civil Engineering  
Land Surveying

116 West 4th Street South  
P.O. Box 903  
Newton, IA 50208  
Phone: (641) 787-9600  
Fax: (641) 787-9602  
www.johnstoneandassociates.biz

PROJECT NO:  
13-024  
DATE:  
10 Oct 13  
DRAFTED BY:  
CRJ  
F.B. REF:  
13/74  
SHEET NO:  
1

Found Red Sandstone 4"x3"x6"  
 Tile 2"  $\phi$  x 7" Broken 2-4" Tile conc Filled

Set C.M. over 3"x4" Tile  
 1-Piece of 2" Tile 7" Long & Pieces of  
 of soft Bricks.



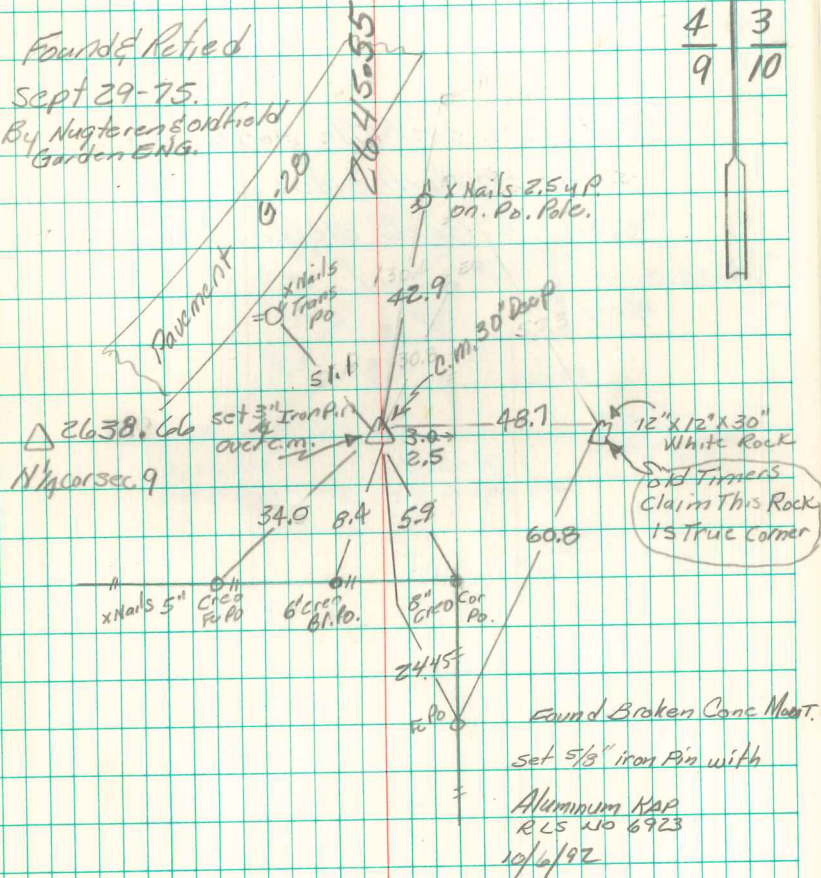
N.E. Cor sec 9-76-18

Set - 8-14-39

Notes: Wignall-Mandell, Koors

C.R.I. & P. Rail Road

Found & Retied  
 Sept 29-75.  
 By Nugteren & Odfield  
 Garden Eng.



4	3
9	10