

Found 2 bearing trees and Cor. of
house Ref. for Stone and tile set
by County Engineer R.T. Johnson.
Stone and tile destroyed by Grader
All reference points checked so
considered this point true corner.

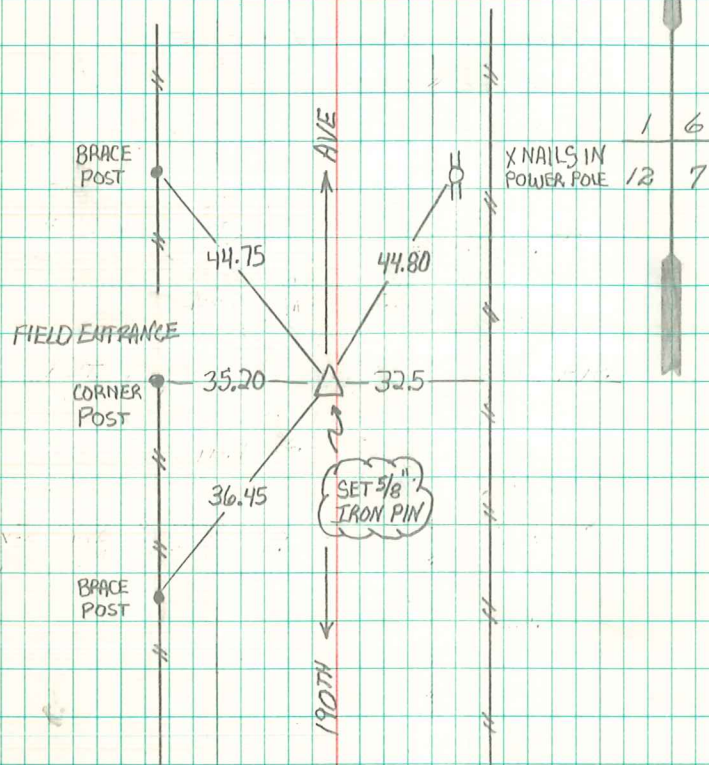
Set C.M. over tile and placed
brick over C.M.

E. Cor. 12-76-19

Set: 1-30-41

Notes: Nandall

Retied June 10, 1971 Moll, Pragon, Duakin



RE-TIED 11-22-11

RANDAL J. NUGTEREN