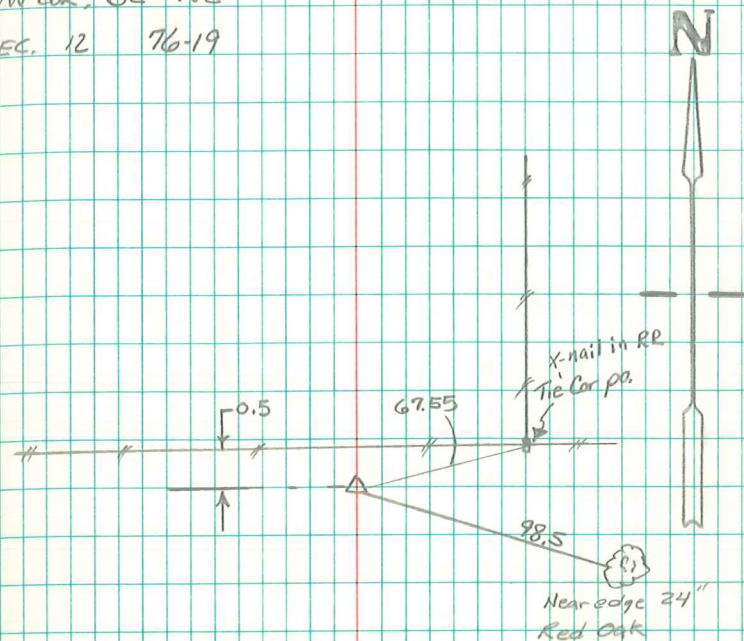


NW COR. SE⁴-NE⁴
SEC. 12 76-19



Nov. 14, 1995 established Cor. at
intersection of line between NE Cor SE-NE
and USCEC MON. 207.6 found at old fc. Cor.
and between midpoint of N. line NE¹⁴ and USCEC MON
207.2 which is 20.0' North of SW Cor SE-NE,
set 5/8" x 30' re bar.