



Document 20-370

Book 2020 Page 370 Type CORNR Pages 1
Date 1/24/2020 Time 10:18 AM
Rec Amt \$7.00



GARDEN & ASSOC.

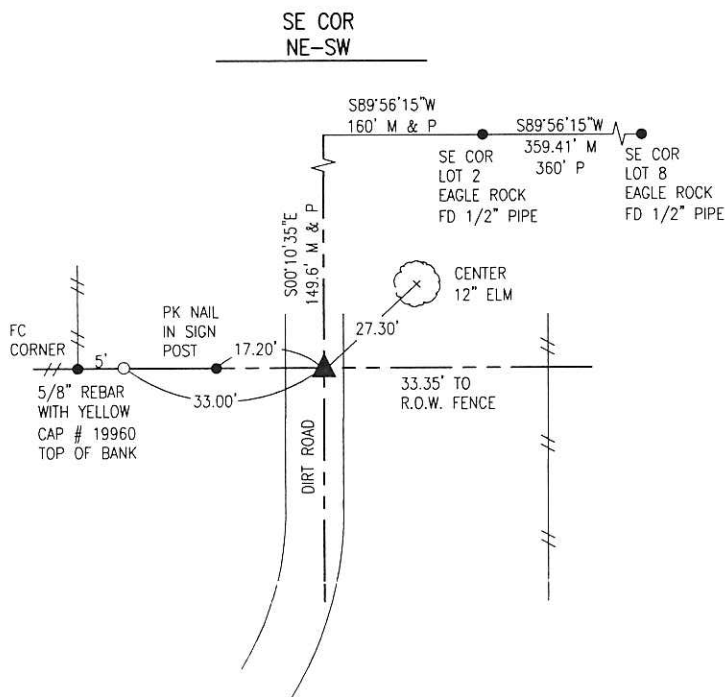
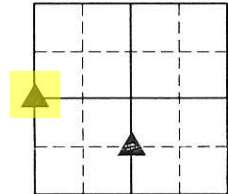
P.O. Box 451, Oskaloosa, Iowa 52577-0451 Phone: (641)672-2526

KAREN SCHWANEBECK, RECORDER
MARION COUNTY IOWA

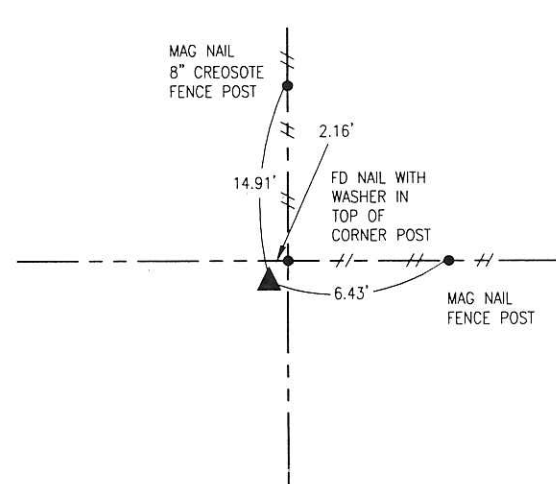
UNITED STATES PUBLIC LAND SURVEY CORNER CERTIFICATE

OF

Land Survey Monuments situated in Section 17, Township 76, Range 19, of the Fifth Principal Meridian, MARION County, Iowa. Previously recorded in NO CERTIFICATE OF RECORD in County Recorder's Office. Monument Description and Remarks: SEE BELOW



WEST 1/4 COR.



1961
U.S.A.C.E TRACT MAP SHOWS A PIPE AT THIS LOCATION.

1969
THE PLAT FOR EAGLE ROCK ADDITION SHOWS A MONUMENT AT THIS LOCATION BUT DOESN'T SPECIFY WHAT THE MONUMENT IS.

JANUARY 2019
SEARCHED WITH A LOCATOR AND PROBED IN THE AREA OF THE CORNER. DID NOT FIND ANY MONUMENTATION. 1/2" PIPES WERE FOUND AT THE SE CORNER OF LOT 2 AND LOT 8 OF EAGLE ROCK ADDITION. A LINE WAS EXTENDED WESTERLY PLATTED DISTANCE (160') THROUGH THOSE TWO CORNERS TO THE SECTION LINE. A LINE WAS THEN EXTENDED SOUTHERLY PLATTED DISTANCE (149.6') THROUGH THE CALCULATED POINT ON THE SECTION LINE AND THE FOUND MONUMENT AT THE CENTER OF SECTION 17-76-19. THIS LOCATION LINES UP WELL WITH THE FENCE TO THE WEST. SET 5/8" X 30" REBAR WITH PLASTIC YELLOW CAP #19960 3" DEEP.

JANUARY 2019
FOUND 6 X 6 CONCRETE MONUMENT WITH BRASS U.S.A.C.E. DISC EXPOSED AT A TWO-WAY FENCE CORNER.

I hereby certify that this land surveying document was prepared and the related survey work was performed by me or under my direct personal supervision and that I am a duly licensed Professional Land Surveyor under the laws of the State of Iowa.

Bobby J. Maddaleno 1-18-20
Bobby J. Maddaleno, P.L.S. Date
License number: 19960
My license renewal date is December 31, 2021

List Corners to be Indexed			
Corners	Section	Township	Range
WEST 1/4	17	76	19
SE COR NE-SW	17	76	19



Pds 7000x . Ret Garden & Assoc env