

NAOMI ELLIS, RECORDER  
 MARION COUNTY IOWA



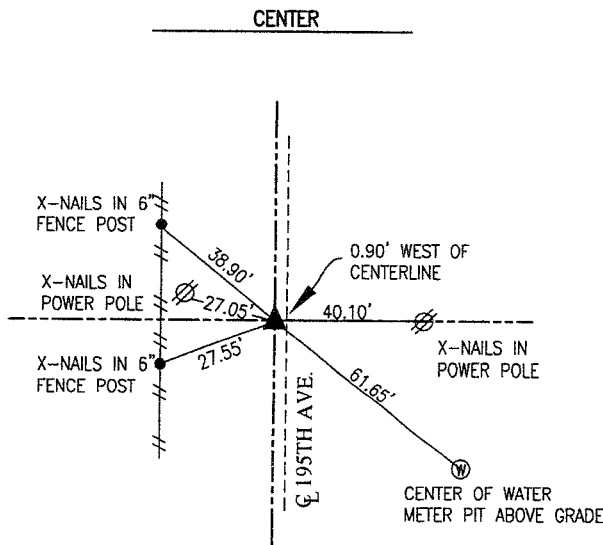
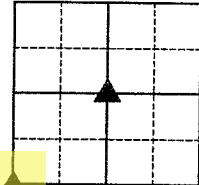
GARDEN & ASSOC. P.O. Box 451, Oskaloosa, Iowa 52577-0451 Phone: (641)672-2526

UNITED STATES PUBLIC LAND SURVEY CORNER CERTIFICATE

OF

Land Survey Monuments situated in Section 31, Township 77, Range 18, of the Fifth Principal Meridian, MARION County, Iowa. Previously recorded in BOOK 1 PAGE 90 in County Recorder's Office.

Monument Description and Remarks: SEE BELOW

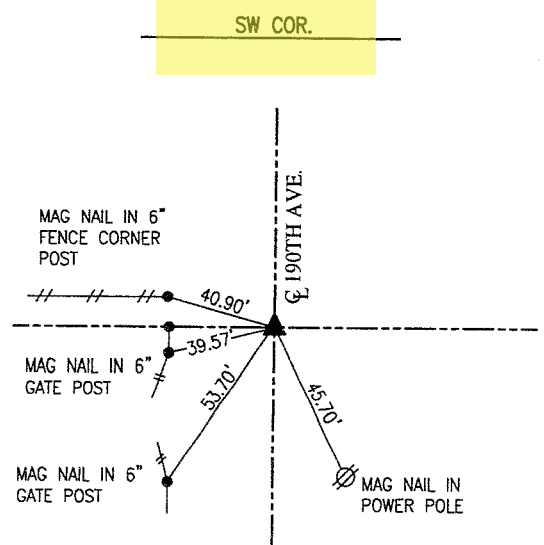


1978 PLS 6708  
 ESTABLISHED ON LINE BETWEEN N 1/4 & S 1/4 AT FENCE LINE EAST. THIS CHECKS DIMENSION TO 1/4-1/4 FENCE NORTH AND N 1/4. 12.60' N OF A STRAIGHT LINE FROM WEST 1/4 CORNER TO E 1/4 CORNER.

OCTOBER 6, 1992 PLS 6707  
 FOUND 3/4" GAS PIPE WITH GARDEN AND ASSOCIATES CAP.

OCTOBER 16, 1992 PLS 6708  
 FOUND 1" PIPE 6" DEEP. SET 60D ABOVE.

NOVEMBER 3, 2023  
 FOUND 60D NAIL SET ABOVE 1" PIPE 4" DEEP IN A HOLE IN A SEALCOAT ROAD.



OCTOBER 6, 1992 PLS 6707  
 FOUND WPA CONCRETE MONUMENT WITH 1/2 IRON PIPE ABOVE.

OCTOBER 1997 PLS 6708  
 FOUND 1/2" REBAR ABOVE WPA CONCRETE MONUMENT.

NOVEMBER 3, 2023  
 FOUND 1/2" REBAR 8" DEEP IN GRAVEL ROAD.

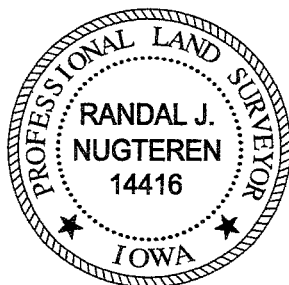
I hereby certify that this land surveying document was prepared and the related survey work was performed by me or under my direct personal supervision and that I am a duly licensed Professional Land Surveyor under the laws of the State of Iowa.

*Randal J. Nugteren* November 28, 2023  
 Randal J. Nugteren, P.L.S. Date

License number: 14416

My license renewal date is December 31, 2024

SEAL



List Corners to be Indexed

Corners	Section	Township	Range
CENTER	31	77	18
SW COR.	31	77	18

pd \$ 700 Check - Ret G & A enw

Found Sandstone 18" x 10" x 6"  
2-2" Round tile.

Set C.M. placed stone on N. side

N.E. Cor. 1-76-19  
Set: 11-9-39  
Kennedy, Frazier & Luther.

D. W. Thomas  
Notes: Mignall

