

Instr. Number: 19-4554  
 BK: 2019 PG: 4554  
 Recorded: 10/2/2019 at 1:49:13.0 PM  
 County Recording Fee: \$7.00  
 Iowa E-Filing Fee: \$3.13  
 Combined Fee: \$10.13  
 Revenue Tax:  
 KAREN SCHWANEBECK, RECORDER  
 Marion County, Iowa

PREPARED BY & RETURN TO TERRY COADY, SNYDER & ASSOCIATES, INC. 2727 SW SNYDER ROAD, ANKENY, IOWA 50023 (515) 964-2020

## UNITED STATES PUBLIC LAND SURVEY CORNER CERTIFICATE OF

Land Survey Monuments situated in Section 22, Township 76, Range 19, West of the Fifth Principal Meridian, MARION County, Iowa. Previously recorded in Book 2010, Page 2836 in County Recorder's Office.  
 (book, page, document number, ect.)

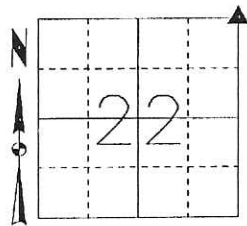
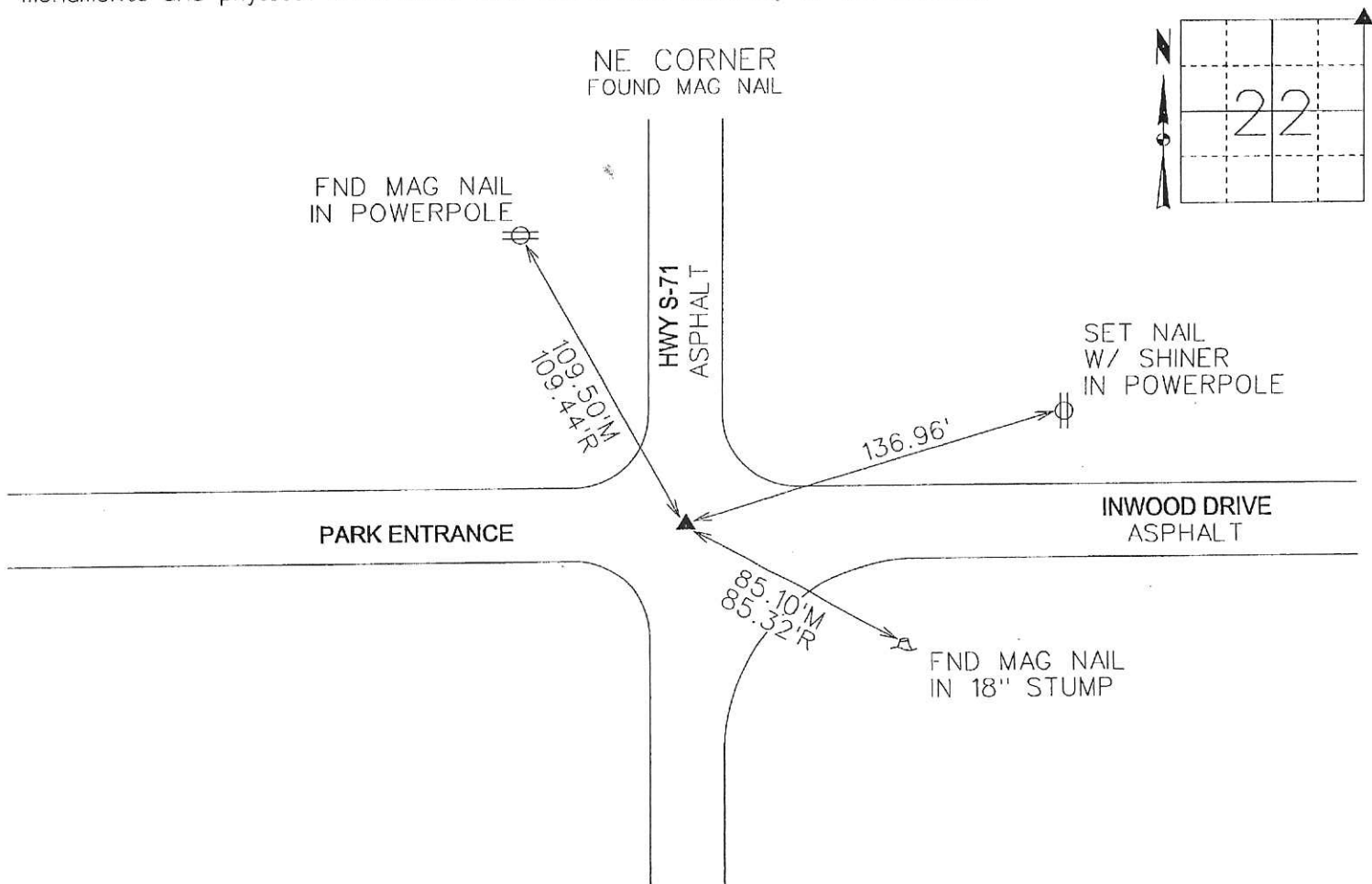
(Show reason for preparing this certificate, the evidence and detailed procedures used in establishing the corner positions and monumentation found or placed.)

### Monument Description and Remarks:

THE EXISTING CORNER CERTIFICATE RECORDED IN BOOK 2010, PAGE 2836 OF THE MARION COUNTY RECORDER'S OFFICE INDICATED THAT THE NORTHEAST CORNER IS MONUMENTED WITH A MAG NAIL. SEARCHED AREA USING METAL DETECTOR AND EXISTING TIES AND FOUND MAG NAIL. VERIFIED MONUMENT LOCATION WITH REMAINING TIES AND ACCEPTED FOUND MONUMENT AS THE SECTION CORNER. THIS CERTIFICATE IS BEING PREPARED BECAUSE THERE ARE NO LONGER THREE VALID TIES OF RECORD.

### Plan-View

(Show a minimum of three reference ties to durable physical objects, relevant monuments and physical conditions that will enable recovery of the corner.)



NOTE: ALL DISTANCES MEASURED HORIZONTAL UNLESS OTHERWISE NOTED.

I hereby certify that this land surveying document was prepared and the related survey work was performed by me or under my direct personal supervision and that I am a duly licensed Professional Land Surveyor under the laws of the State of Iowa.

*Terry Coady* 10-1-2019  
 Terry Coady, PLS Date

License Number 18643  
 My License Renewal Date is December 31, 2019

Pages or sheets covered by this seal:  
 SHEET 1 OF 1

List Corners to be Indexed			
Corners	Section	Twp	Range
NE CORNER	22	76	19
SE CORNER	15	76	19
SW CORNER	14	76	19
NW CORNER	23	76	19

TECH: JDP

PN: 119.0864

DATE: 9-10-19

Found 2 granite rocks, one  
 14" x 9" x 8" & a large granite  
 boulder over a 3" A tile.  
 (Watkins tile)  
 Right where we set Mon.

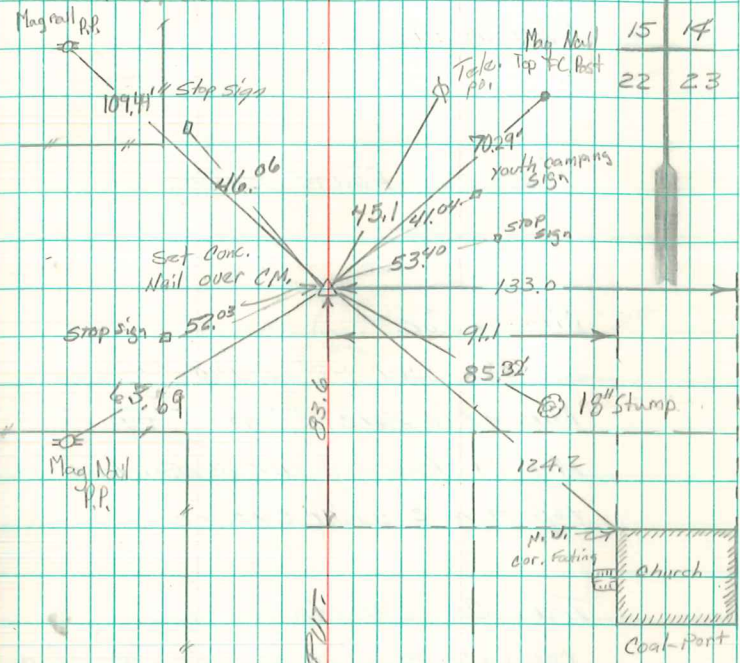
The tile was deep enough so  
 we set CM on tile. Top Mon 16"  
 under road bed. Put one small  
 rock on top Mon. The large boulder  
 on south side Mon at top.

N.E. Cor 22-76-19  
 Set: 12-19-40  
 Kennedy, Shore, Mitchell

Notes: Kennedy



Retired 3-15-71  
 RETIRED 3/28/88



Retired 4/25/01  
 10/07

2/5/10  
 Steve Roberts