

Found 2-3" drain tile over  
 large sand stone over  
 2-2" horse shoe tile (Watkins tile)  
 Right where we set Mon.

Set Mon. on bottom horse shoe  
 tile left in place. We broke  
 one A tile getting it out, we put  
 it at base of Mon. One 3" tile in  
 hole at side Mon. Stone on N. East  
 cor. Mon at base.

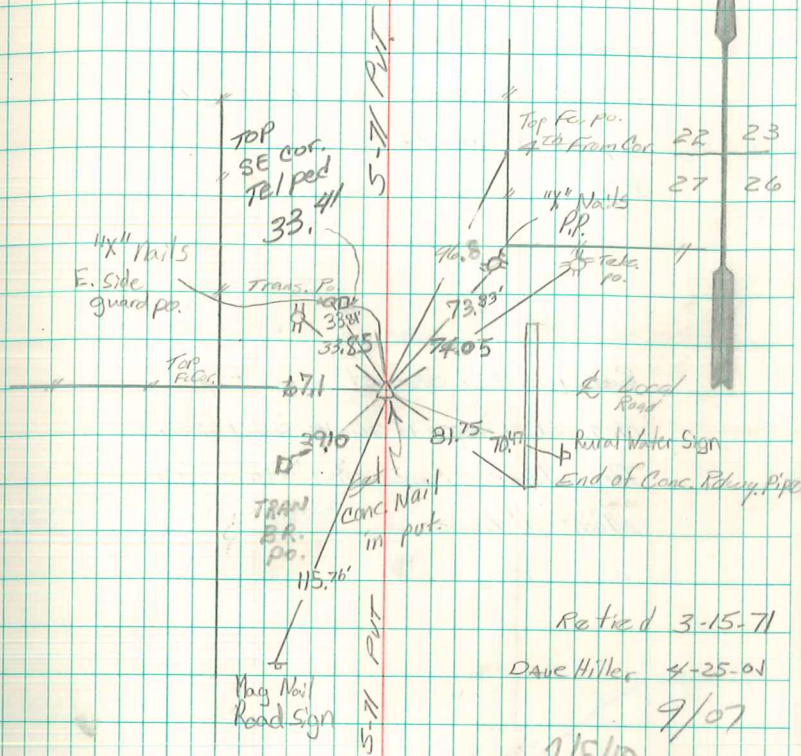
N. E. Cor. 27-76-19

Set: 12-24-40

Notes: Kennedy

Kennedy, Shore, Mitchell, Harger

N



Retired 3-15-71  
 Dave Miller 4-25-01  
 9/07  
 2/5/10  
 Steve Roberts