

Prepared by: Abie C. Davis, P.E. & L.S., 1428 Oregon St., Knoxville, Iowa 50138 Phone: (515) 842-5863

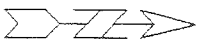
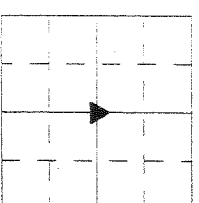
UNITED STATES PUBLIC LAND SURVEY CORNER CERTIFICATE SL519-9.

Land survey Monuments situated in Section 29, Township 76 N, Range 19 W, of the Fifth Principal Meridian, Marion County, Iowa.

Previously recorded in N/A (book, page, document number, etc.) in County Recorder's Office.

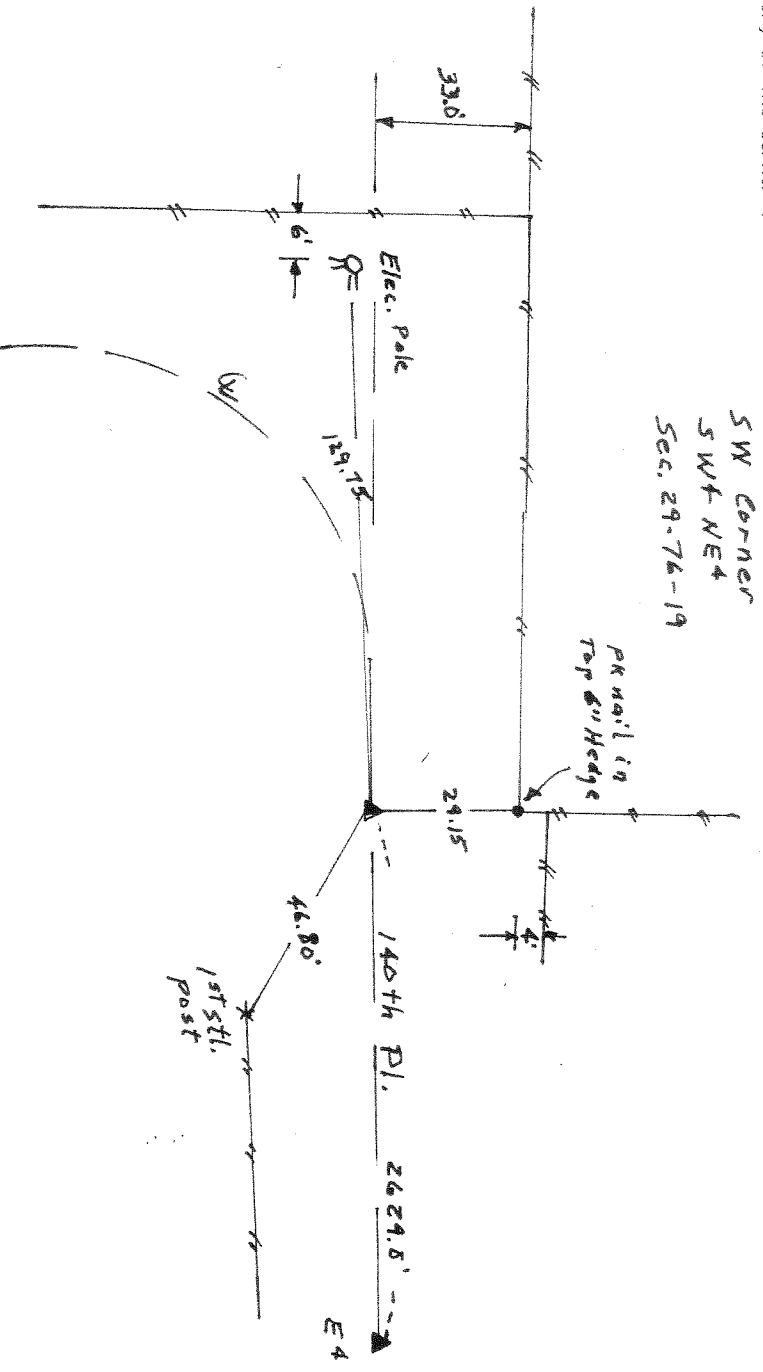
Show reason for preparing this certificate, the evidence and detailed procedures used in establishing the corner positions and monumentation found or placed

Monument Description and Remarks: Set corner in line with old property line north and 33 ft. so. of old fence line west per property description for the NE+ of the SW+ which matched the E road



PLAN - VIEW

(Show a minimum of three reference ties to durable physical objects, relevant monuments and physical conditions that will enable recovery of the corner.)



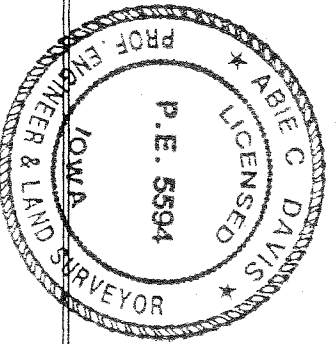
I hereby certify that the survey work was completed and this land surveying document was prepared by me or under my direct personal supervision and that I am a duly licensed land surveyor under the laws of the state of Iowa

Signature: Abie C. Davis
Abie C. Davis, P.E. & L.S.

Date: 5/7/14 Reg. No. 5594

My license renewal date is December 31, 2015

SEAL



List Corners to be Indexed
Corners Section Twp Range
SW Corn. 29 76 N 19 W
SW+ NE+ 29 76 N 19 W