



Document 18-2309

Book 2018 Page 2309 Type CORNR Pages 1  
Date 6/05/2018 Time 11:01 AM  
Rec Amt \$7.00

KAREN SCHWANEBECK, RECORDER  
MARION COUNTY IOWA

Prepared by Abie C. Davis, P.E. & L.S., 1428 Oregon St., Knoxville, IA 50138 (641) 842-5863

### UNITED STATES PUBLIC LAND SURVEY CORNER CERTIFICATE

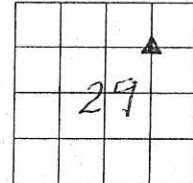
OF

Land survey Monuments situated in Section 29, Township 76N, Range 19W, of the Fifth Principal Meridian, Marion County, Iowa.

Previously recorded in N/A in County Recorders Office.

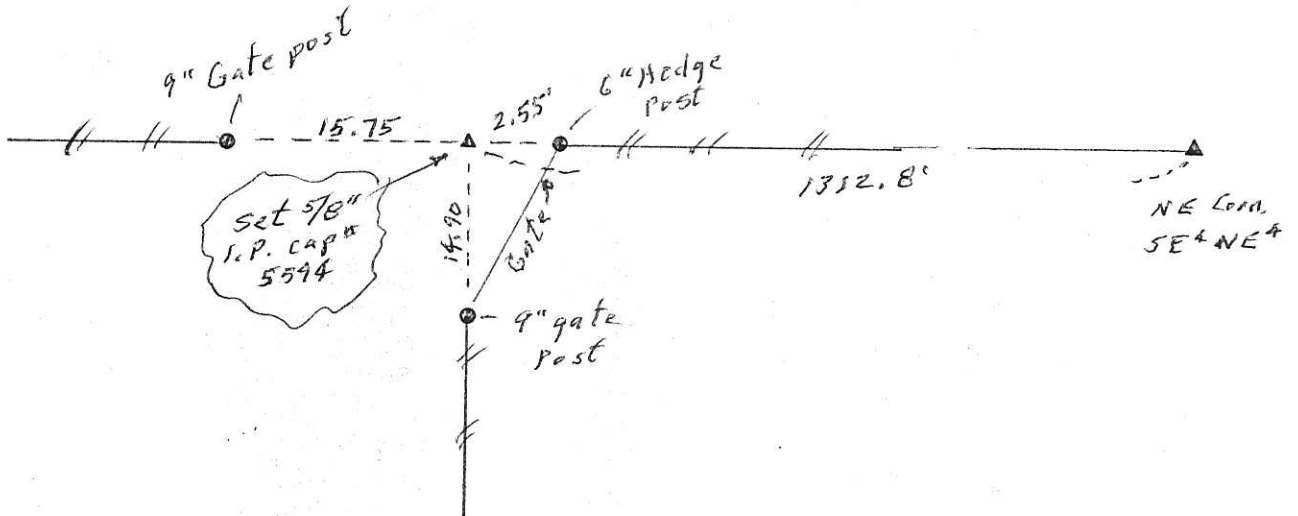
(book, page, document number, etc.)  
Show reason for preparing this certificate, the evidence and detailed procedures used in establishing the corner positions and monumentation found or placed

Monument Description and Remarks: Set corner at the intersection of property line fences.



### PLAN - VIEW

(Show a minimum of three reference ties to durable physical objects, relevant monuments and physical conditions that will enable recovery of the corner.)



I hereby certify that the survey work was completed and this land surveying document was prepared by me or under my direct personal supervision and that I am a duly licensed land surveyor under the laws of the state of Iowa

Signature: Abie C. Davis

Abie C. Davis, P.E. & L.S.

Date: 6/4/18 Reg. No. 5594

My license renewal date is December 31, 2019

SEAL



List Corners to be Indexed			
Corners	Section	Twp	Range
NW Corn.	29	76N	19W
SE & NE			

pd. & 7- Cash, Ret Abie Davis