

Found 1-3" tile Broken over Broken  
lime Rock on Piece was 11"x8"x3"  
right where we set C.M.

Set C.M. over 1-2" tile standing  
on END TOP man, 12" under surface

Put Broken tile around man.

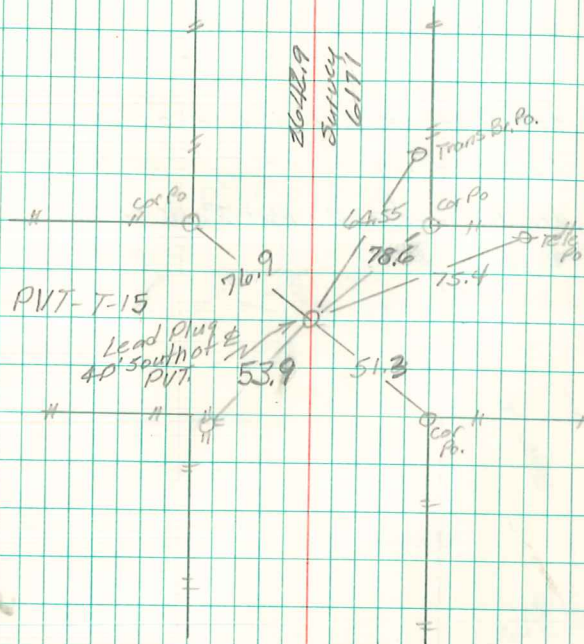
E $\frac{1}{4}$  Cor. 35-76-19

Set-5-8-41

Notes - Kennedy

Party - Luther, Elsberry  
 $\Delta$  N.E. of

68



Lead Plug ALSO IN  $\Delta$  OF PAVEMENT.

RETIED 3-31-88

11/22/96