

# UNITED STATES PUBLIC LAND SURVEY CORNER CERTIFICATE

OF

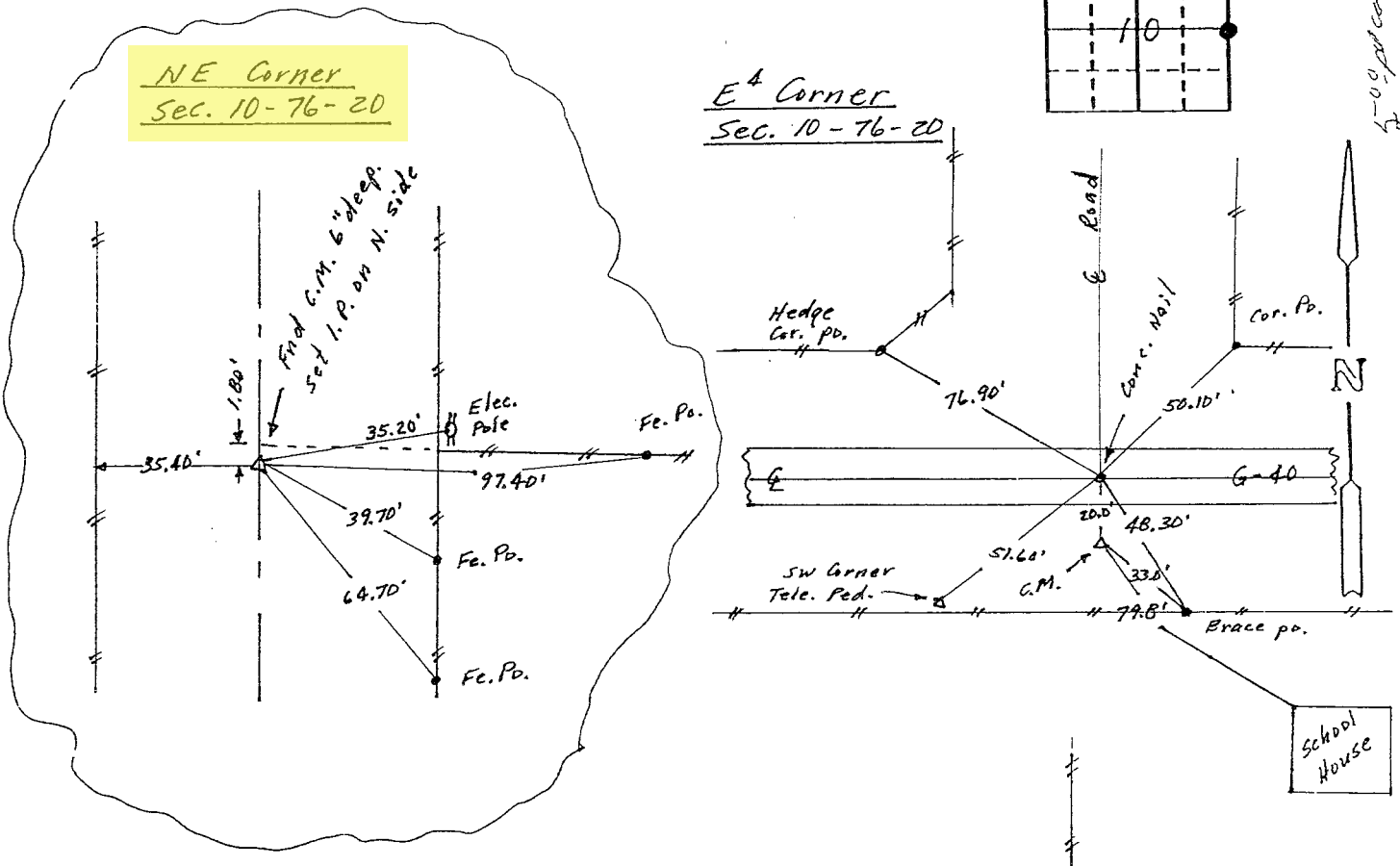
Land Survey Monuments situated in Section 10, Township 76 N, Range 20 W, of the Fifth Principal Meridian, Marion County, Iowa.  
Previously recorded in N/A in County Recorder's Office.  
(book, page, document number, etc.)

(Show reason for preparing this certificate, the evidence and detailed procedures used in establishing the corner positions and monumentation found or placed.)

Monument Description and Remarks: E<sup>4</sup> Corner Sec. 10-76-20 Reset reference point on centerline of G-40 20.0' N. of Conc. Mon. from ties.

## PLAN - VIEW

(Show a minimum of three reference ties to durable physical objects, relevant monuments and physical conditions that will enable recovery of the corner.)



I hereby certify that the survey work was completed and this certificate was prepared by me or under my direct personal supervision and that I am a duly registered land surveyor under the laws of the state of Iowa.

Signature: Abie C Davis  
Name typed or printed: Abie C Davis  
Date: 2/18/92 Reg. No. 5594



Corners	List Corners to be Indexed Section	Twp	Range
NE Corner	10	76 N	20 W
E <sup>4</sup> Corn.	10	76 N	20 W

INSTR. NO. 3385  
BOOK 1 PAGE 44  
RECD. FEE 5.00

92 FEB 19 AM 11:06

TRANSFER  
MARILYN L. VAN ZEE  
MARION CO. RECORDER

