

Found 2 - Sandstones 18"x6"x5"
& 12"x5"x4" 1 - Granite Rock 20"x14"x12"

set C.M. Placed Granite Rock at
Base of C.M.

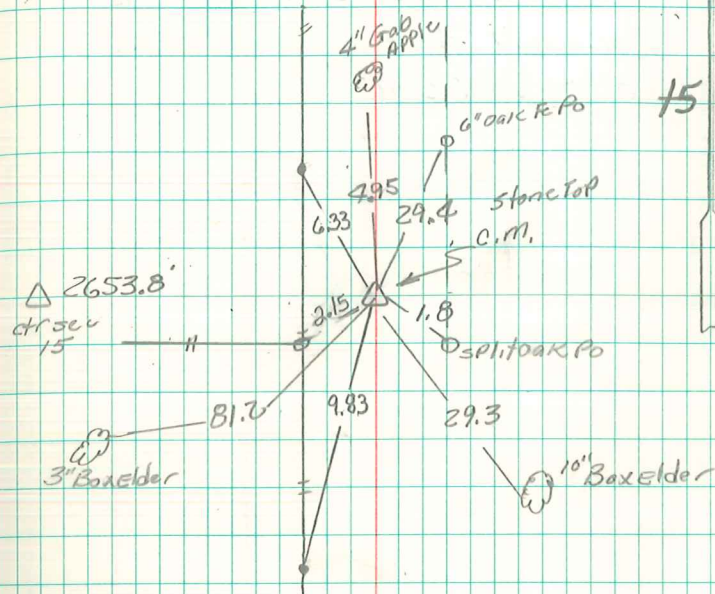
set 1 - Stone on top C.M. 12"
Below surface.

81.2' N.E. of 3" Box Elder
29.4' S.W. " 6" oak Po.
29.3' N.W. " 6" Box Elder
01.8' N.W. " split oak Cor Po.

E¹/₄ cor sec 15-76-20

Set: 4-22-40

Notes: Kennedy, Wignall, Ogden
Shore Eddinger



RE-TIED 8-30-12.

BRIAN MORRISSEY