

Found 1-2" D Tile

Set C.M. over tile Lowered  
in Place.

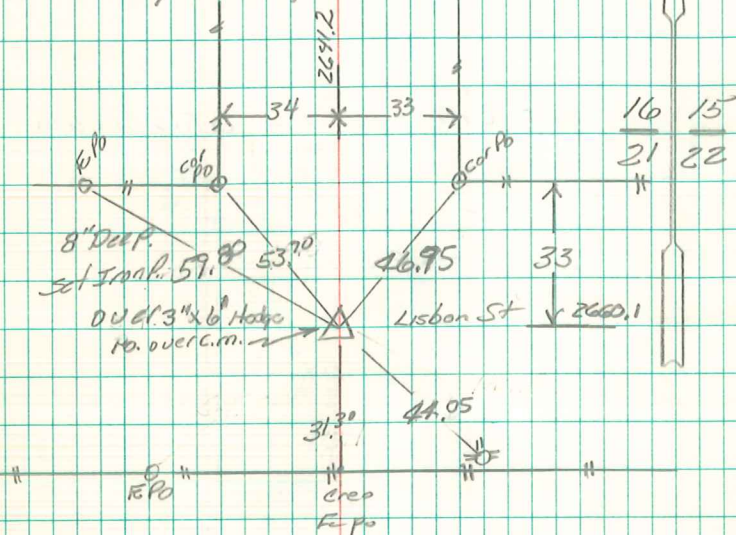
Put sand stone 10"x8"x3" on  
Top C.M.

N.E. Cor 21-76-20

Set 9-17-40

Notes - Kennedy

Party = Wells, Burrus, Crozier & Hewitt



Found & Retied

June 10 - 1975

Mull, Progn & Miller. C.M. Buried by Constr

8/11/03 Abie Davis Found July 31 - 1953 by

Dinson, Dainty & Carper  
Set = 3"x6" Hedge Post over  
C.M.