

Found Sandstone 15" x 14" x 6"
 2-2½" Horseshoe Tile

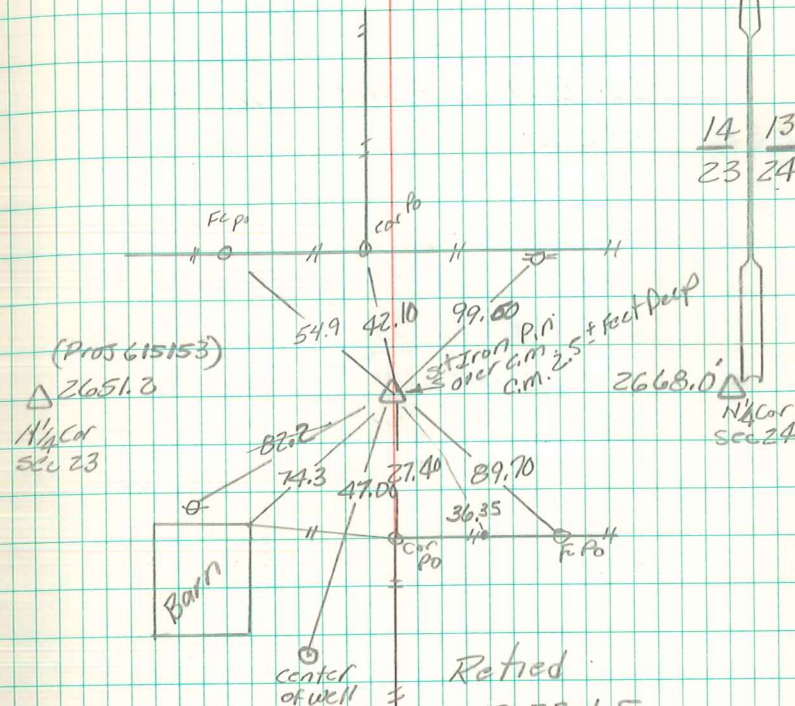
Lowered one tile in orig Position
 & Placed C.M. on Top of it.
 Placed stone on Top of C.M.
 12" below Old Rd Bed.

N.E. Cor Sec 23-76-20

Set: 4-19-40

Notes: Kennedy-Wignall, Shore
 Ogden & Eddington

14 13
 23 24



Retied
 12-23-65

Randol, Betterton, Brooks
 Davis & Applegate.

11-12-92 Abie Davis