

Found Granit Rock 7"x6"x4"
over 2-2" O Tile & 1-cement Brick

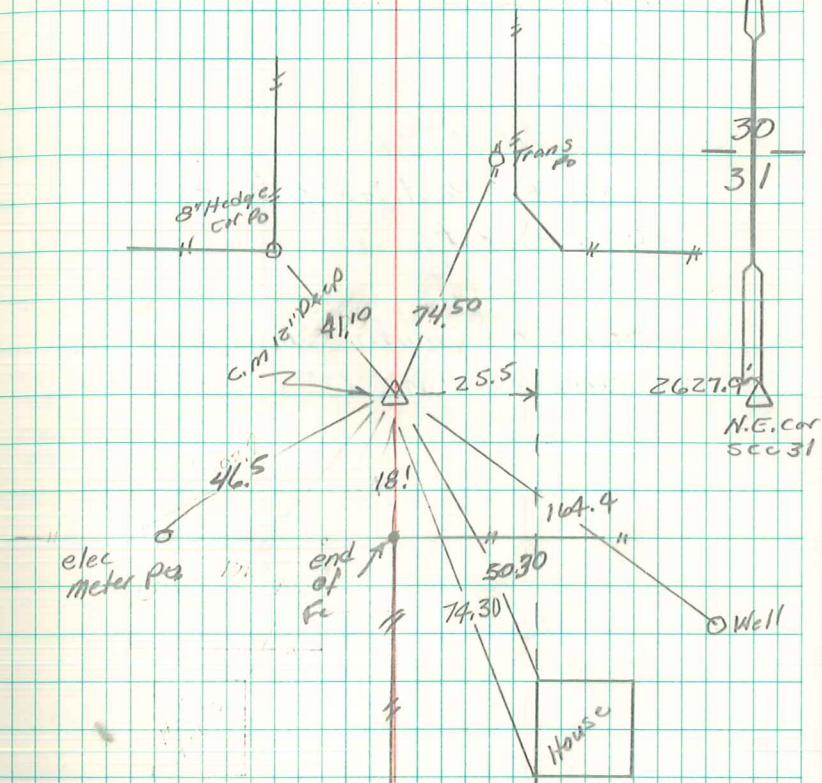
Lowered 1-2" O Tile in Place &
set c.m. on Top Brick at base of
c.m.

set stone on Top C.M.
C.M. 12" Deep.

N $\frac{1}{4}$ Cor sec 31-76-20

Set! 5-17-40

Notes: Wignall-Kennedy, Ogden, Shore



11/9/07 Abie Davis