

Found sandstone 24" x 18" x 2"

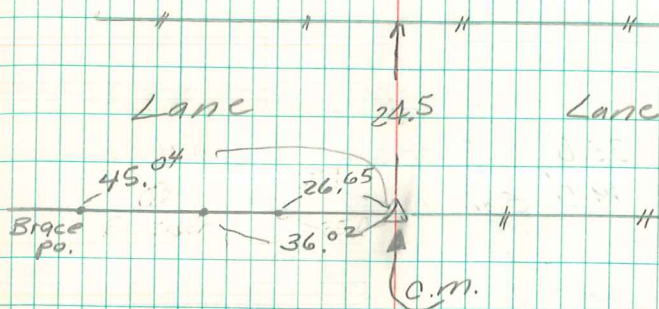
set c.m.

167.4' East of Box Elder
35.0' " " Cedar Post
24.5' South " W. Fe, N. side Lane

E¹/₄-Cor sec 36-76-20

Set: 4-18-40

Notes: Wignall, Wells, Crozier
Hewitt & Mandell



End sandstone,
Set capped rebar
North side of stone

Brian Morrissey
8/8/07