

Found one of Johnson Concrete
Post & Cement Filled Gas Pipe

Set c.m. on North side conc. P.

Put sandstone 14" x 8" x 4" on top
c.m.

c.m. 16" Below surface

N $\frac{1}{2}$ Cor 5-76-20

Set - Dec 11-40

Notes - Nardin

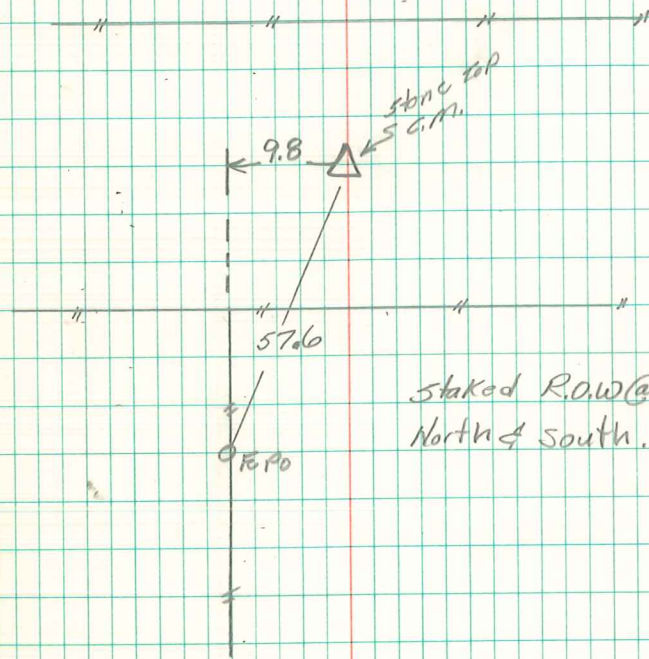
Party = Wells, Burrus, Harger

N



32

5



staked Row @ 33'
North & South.