

INSTR. NO. 924
 BOOK 2 PAGE 104
 RECD. FEE 6.00
 00 FEB 28 PM 1:57

TRANSFER
 SANDRA S. AGAN
 MARION CO. RECORDER

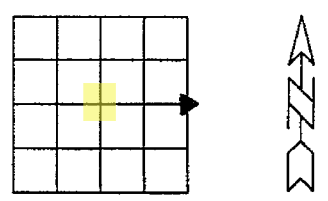
Prepared by Abie C. Davis, P.E. & L.S., 1428 Oregon St., Knoxville, IA 50138 (515) 828-2225

UNITED STATES PUBLIC LAND SURVEY CORNER CERTIFICATE
 OF

Land survey Monuments situated in Section 7, Township 76N, Range 20W, of the Fifth Principal Meridian, Marion County, Iowa.
 Previously recorded in N/A in County Recorders Office.

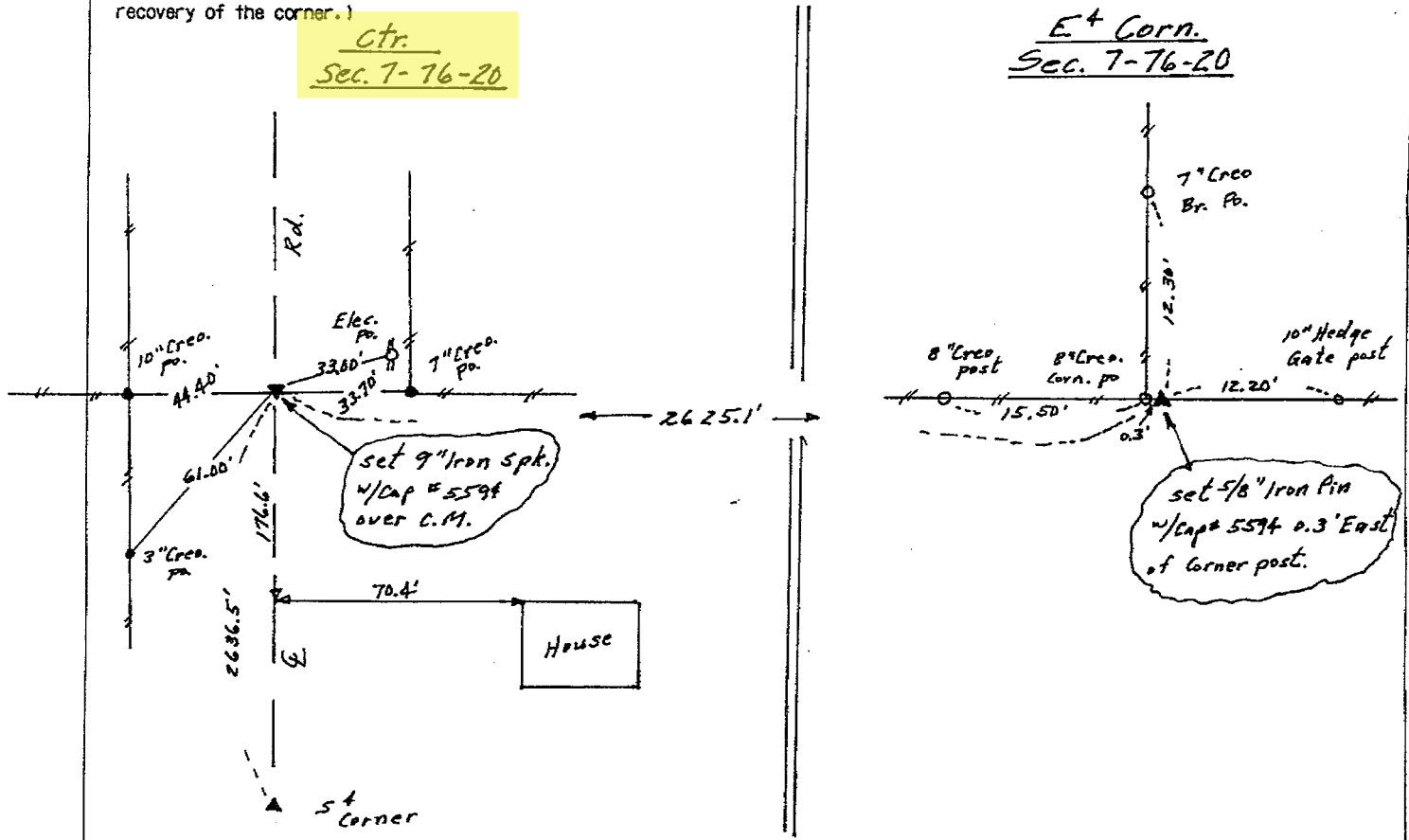
Show reason for preparing this certificate, the evidence and detailed procedures used in establishing the corner positions and monumentation found or placed

Monument Description and Remarks: E⁺ Corner - dug 3'x15' x 2' deep hole. Did not find C.M. set 5/8" Iron Pin w/ Cap #5594 at east edge Corner post that was best evidence of location of corner.



PLAN - VIEW

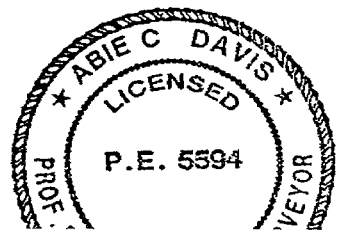
(Show a minimum of three reference ties to durable physical objects, relevant monuments and physical conditions that will enable recovery of the corner.)



I hereby certify that the survey work was completed and this land surveying document was prepared by me or under my direct personal supervision and that I am a duly licensed land surveyor under the laws of the state of Iowa
 Signature: Abie Davis
 Abie C. Davis, P.E. & L.S.
 Date: 2/28/00 Reg. No. 5594
 My license renewal date is December 31, 2001

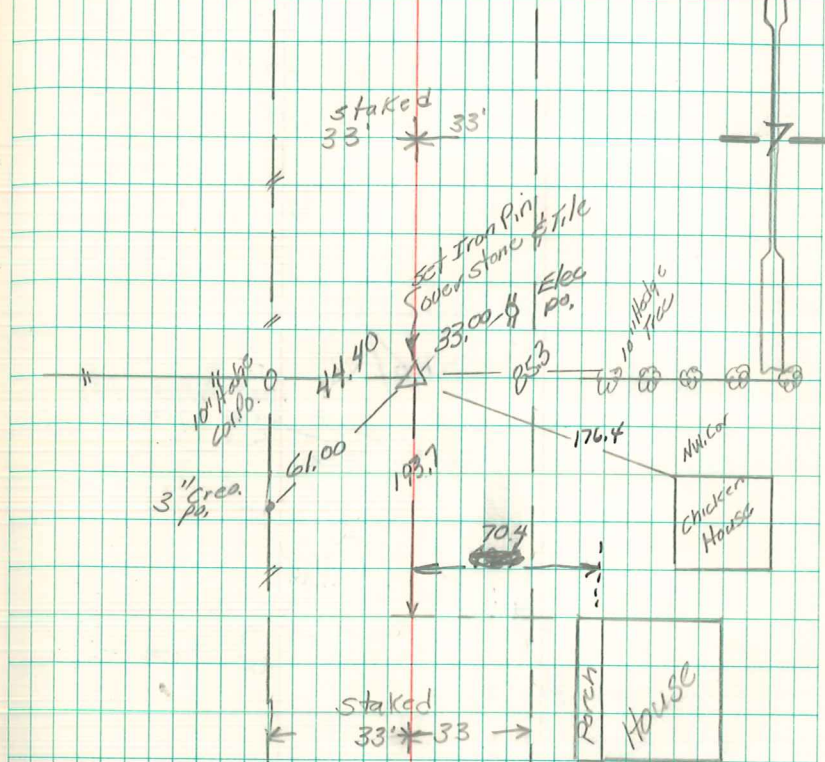
List Corners to be Indexed			
Corners	Section	Twp	Range
E ⁺	7	76 N	20W
ctr.	7	76 N	20W

SEAL



pd 6.00 capd Ret Abie Davis

Ct. sec 7-76-20



Set 9" iron spk
w/ cap # 5594
over CM

Abie Davis 2/23/00

26365
A
34
cor