

INSTR. NO. 924  
 BOOK 2 PAGE 104  
 RECD. FEE 6.00  
 00 FEB 28 PM 1:57

TRANSFER  
 SANDRA S. AGAN  
 MARION CO. RECORDER

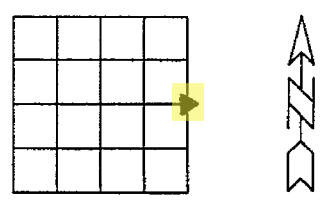
Prepared by Abie C. Davis, P.E. & L.S., 1428 Oregon St., Knoxville, IA 50138 (515) 828-2225

UNITED STATES PUBLIC LAND SURVEY CORNER CERTIFICATE  
 OF

Land survey Monuments situated in Section 7, Township 76N, Range 20W, of the Fifth Principal Meridian, Marion County, Iowa.

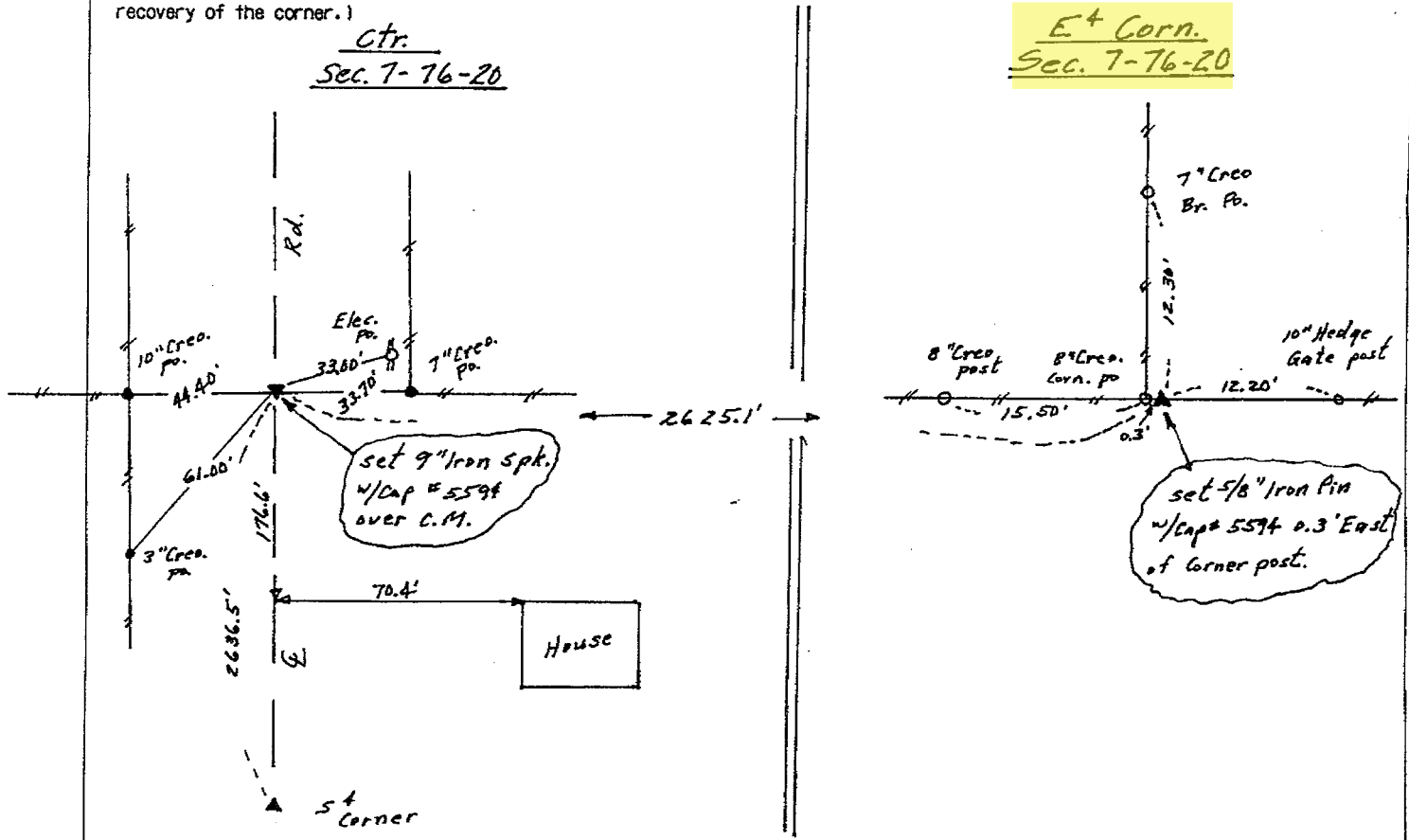
Previously recorded in N/A in County Recorders Office.  
Show reason for preparing this certificate, the evidence and detailed procedures used in establishing the corner positions and monumentation found or placed (book, page, document number, etc.)

Monument Description and Remarks: E<sup>+</sup> Corner - dug 3'x15' x 2' deep hole. Did not find C.M. set 5/8" Iron Pin w/ Cap #5594 at east edge Corner post that was best evidence of location of corner.



PLAN - VIEW

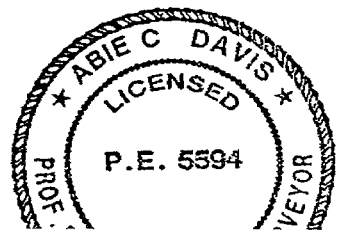
(Show a minimum of three reference ties to durable physical objects, relevant monuments and physical conditions that will enable recovery of the corner.)



I hereby certify that the survey work was completed and this land surveying document was prepared by me or under my direct personal supervision and that I am a duly licensed land surveyor under the laws of the state of Iowa

Signature: Abie Davis  
 Abie C. Davis, P.E. & L.S.  
 Date: 2/28/00 Reg. No. 5594  
 My license renewal date is December 31, 2001

SEAL



Corners	Section	Twp	Range
E <sup>+</sup>	7	76 N	20W
ctr.	7	76 N	20W

pd 6.00 cash Ret Abie Davis

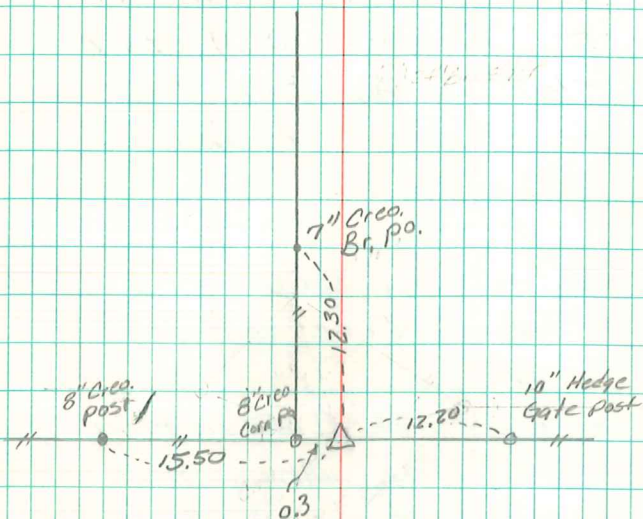
Found 4-Granit Rocks  $14" \times 6" \times 6"$ ,  
 $12" \times 7" \times 4"$   $14" \times 6" \times 3"$ , &  $9" \times 6" \times 4"$ .  
No Tile!

Plumbed stones & Placed on  
END  $1\frac{1}{2}"$  tile. Set C.M. over  
it. 3- small Rocks at base C.M.  
Large one on N.S. Near top  
4" deep.  
C.M.  $13"$  under surface

E $\frac{1}{4}$  Corsec 7-76-20

Set - 7-2-40

Notes - Wignall



Set  $\frac{5}{8}"$  iron pin  
w/ cap #5594 0.3'  
East of corner post.  
Abie Davis 2/28/00