

CENTER SECTION 10-76-21

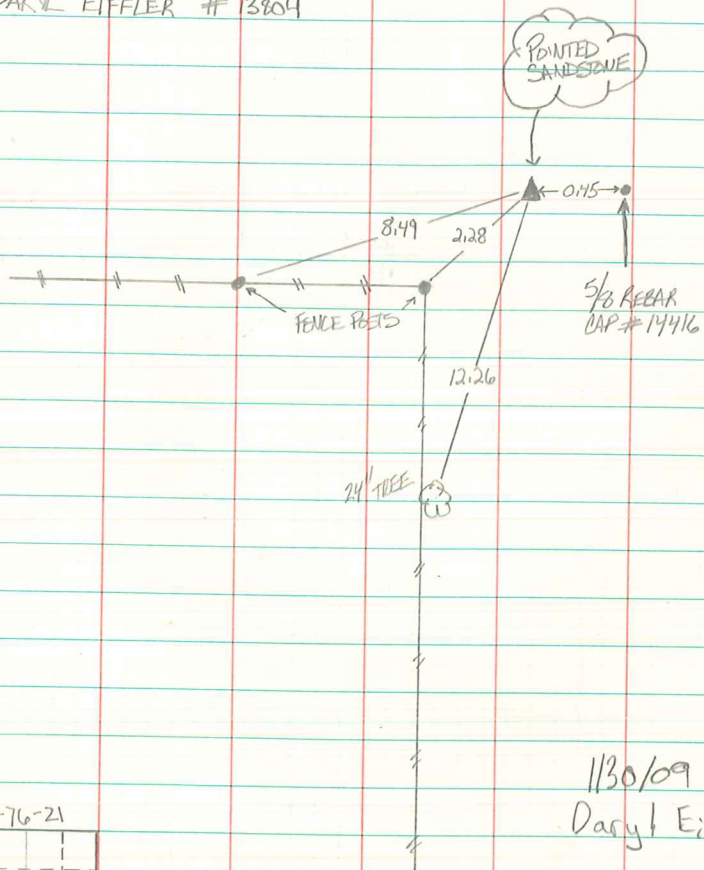
FOUND: PAINTED SANDSTONE 10' DOWN WITH $\frac{5}{8}$ " REBAR

CAP # 14416 0.45' EAST OF HIGH POINT OF SANDSTONE.

HELD HIGH POINT OF SANDSTONE AS TRUE CORNER.

SET TIES AS SHOWN

DARYL EIFFLER # 13804



1/30/09
Daryl Eiffler

