

Corner in deep road cut. Dug hole
8' wide across road, Found No Evidence.
Found stones at $\frac{1}{4}$ Cor & center sec 10
Ran line from these and at intersection
of this line & line E & W. between section
corners we established corner.

Set C.M. over 1-4" Drain Tile standing
on END.

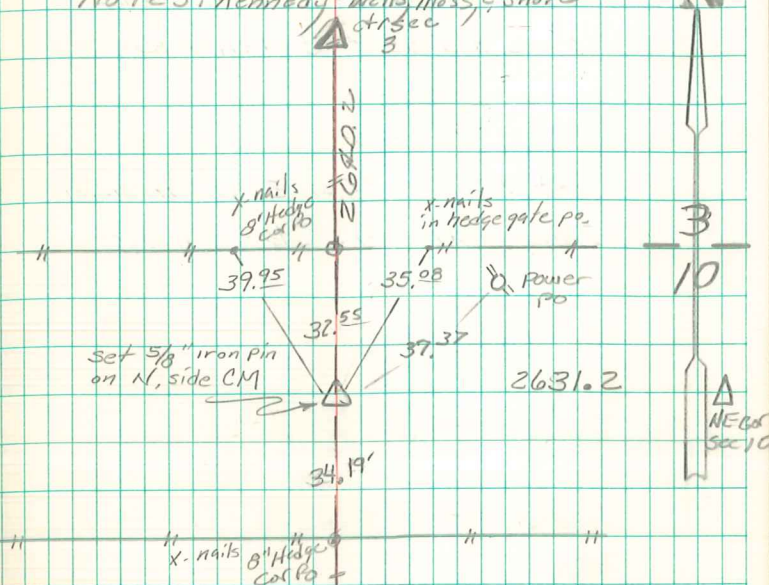
Put sandstone 12"x8"x8" on top C.M.

2640.2' S. of center of sec 3
2631.2' W. of N.E. Cor of sec 10
50.0' S. of oak Hub stake
31.2' S. " 8" Hedge Cor Post
79.6' SW. of 36" Elm Tree
50.0' N. of oak Hub stake
34.4' N. of 8" Hedge Cor Post.

N $\frac{1}{4}$ Cor sec 10-76-21

Set: 11-6-41

Notes: Kennedy - Wells Mess & shore



Top of CM broken off
CM 5" deep

Found and re-tied
2/27/92 Pegan, Quick
Vander Veer

Brian Marney 12/5/92