

Found 4" Hole Filled with Cement  
& Rock 12" Long.

Placed a 2" tile in Hole on  
END & set c.m. over it.

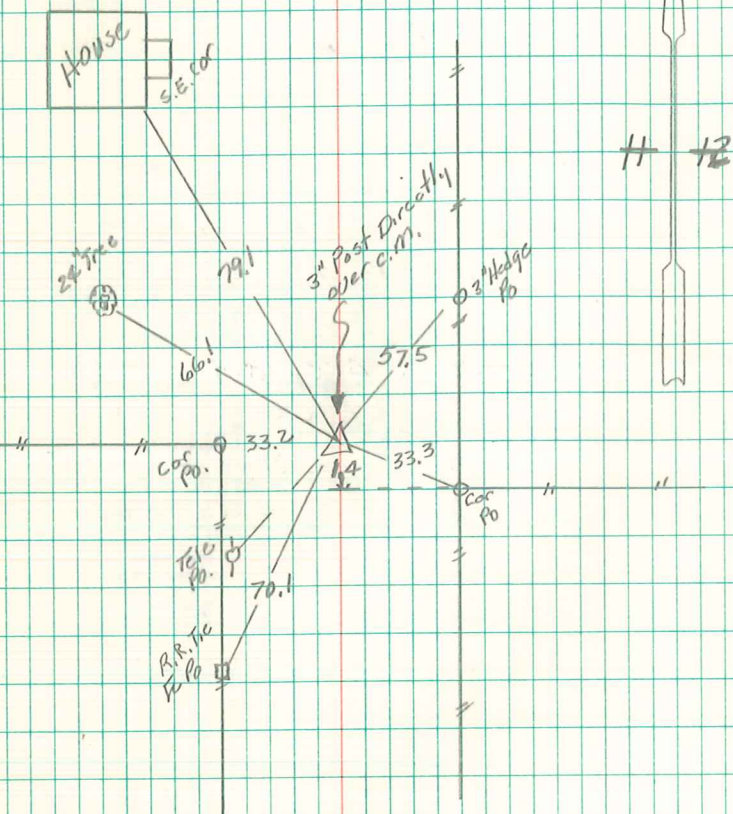
Cement on East side c.m.

Stone on TOP c.m.

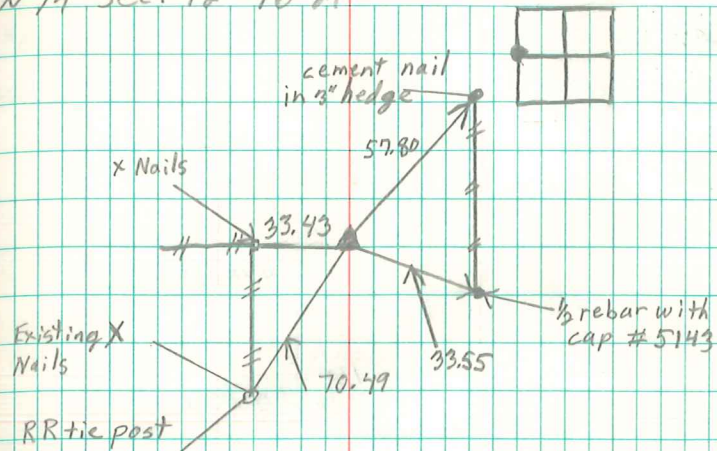
E $\frac{1}{2}$  Cor 11-76-21

Set 5-27-41

Notes: Wignall



W 1/4 Sec. 12-76-21



Fnd.  $\frac{3}{8}$ " x 6" Bolt w/ square head  
 5" Deep. Fnd stone beneath bolt. Fnd. CM  
 1.38' N. of bolt, 30" Deep. Set  $\frac{5}{8}$ " x 24"  
 rebar w/ cap over CM & Placed stone  
 beside pin.

2/11/99  
 David Hiller