

602104



Document 24-1513

Book 2024 Page 1513 Type CORNR Pages 1

Date 4/22/2024 Time 1:49 PM

Rec Amt \$7.00

NAOMI ELLIS, RECORDER
MARION COUNTY IOWA



GARDEN & ASSOC.

P.O. Box 451, Oskaloosa, Iowa 52577-0451 Phone: (641)672-2526

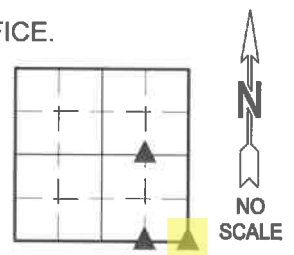
UNITED STATES PUBLIC LAND SURVEY CORNER CERTIFICATE OF

LAND SURVEY MONUMENTS SITUATED IN SECTION 1, TOWNSHIP 76, RANGE 21,
OF THE FIFTH PRINCIPAL MERIDIAN, MARION COUNTY, IOWA.

PREVIOUSLY RECORDED IN NO CERTIFICATE OF RECORD IN COUNTY RECORDER'S OFFICE.

MONUMENT DESCRIPTION AND REMARKS:

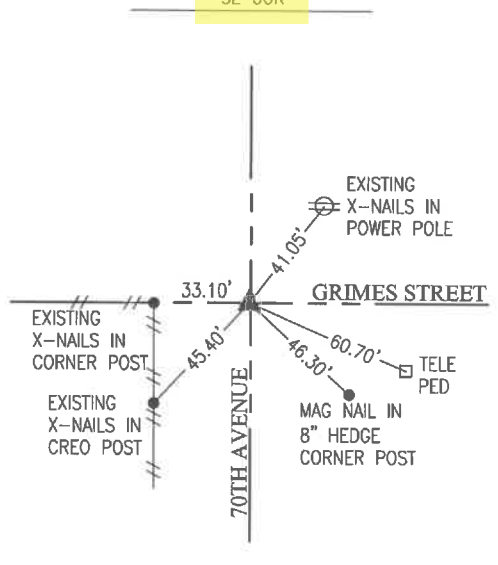
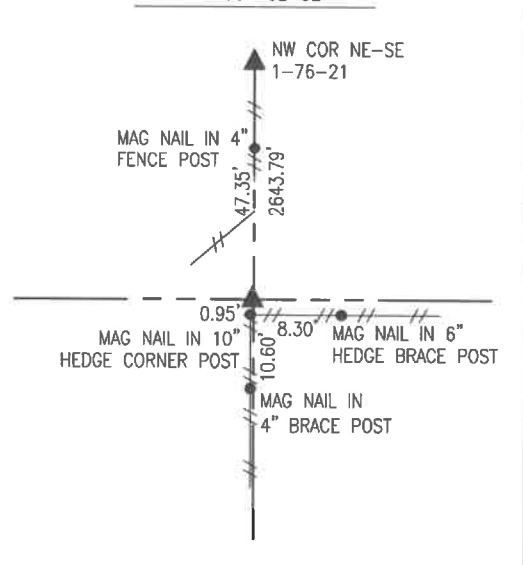
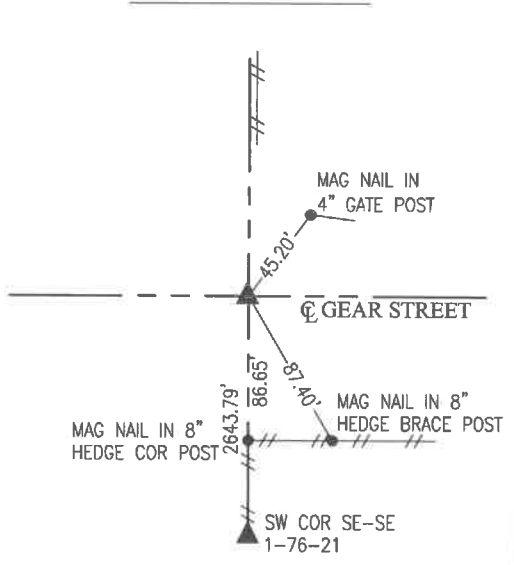
SEE BELOW



NW COR NE-SE

SW COR SE-SE

SE COR



APRIL 5, 2024:
SET 5/8" X 30" REBAR YPC #14416 ON LINE BETWEEN CENTER AND E 1/4 CORNER IN LINE WITH OLD HEDGE FENCE LINE TO SOUTH.

APRIL 5, 2024:
SET 5/8" X 30" REBAR YPC #14416 AT MIDPOINT BETWEEN SE CORNER AND S 1/4 CORNER. LOCATION MATCHES FENCES NORTH AND SOUTH.

MAY 27, 1941:
WPA SET CONCRETE MONUMENT 12" DEEP AND A HUB OVER CONCRETE MONUMENT.
JULY 29, 2005:
PLS #5594 SET 5/8" REBAR WITH TIES.
MARCH 28, 2024:
FOUND 5/8" REBAR YPC #5594 USING UNRECORDED 2005 TIES.

I hereby certify that this land surveying document was prepared and the related survey work was performed by me or under my direct personal supervision and that I am a duly licensed Professional Land Surveyor under the laws of the State of Iowa.



Randal J. Nugteren April 16, 2024
Randal J. Nugteren, P.L.S.
License number: 14416
My license renewal date is December 31, 2024

LIST CORNERS TO BE INDEXED

CORNERS	SECTION	TOWNSHIP	RANGE
NW COR NE-SE	1	76	21
SW COR SE-SE	1	76	21
SE COR	1	76	21

Pl #700 CK - Ret Garden Srv.

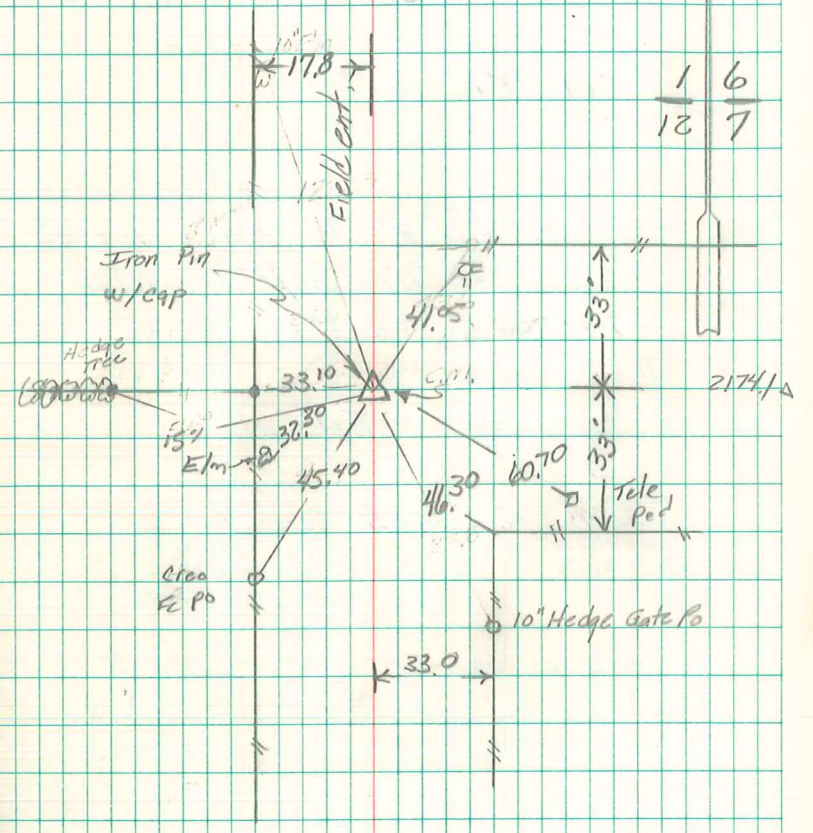
Established Corner

Dug hole 30'x24'x3' Found No evidence Placed Generous amt of Crockery in Bottom of Hole

set c.m. Placed small stone on Top c.m.

c.m. 12" Deep set Hub over c.m.

N.E. Cor 12-76-21
Set 5-27-41
Notes: Wignall



Abie Davis
7/29/05