

Found 6"x8"x14" Limestone over  
2-2" Horse Shoe Tile 4' Below Surface

set c.m. over 1-2" Horse Shoe tile  
in original position

Placed 6"x8"x14" Limestone  
over c.m. marked  $\frac{12}{13}$

64.1' East of x Nails in 12" Hedge tree

20.8' S.E. of Junction of NW wing &  
wall of conc. culvert.

125.0' N.E. of x Nails in 8" Triple mul.

90.59' N.W. " PK NAIL IN HEDGE FC POST

50.0' East " 1x2 conc stake

50.0' West " 1x2 " "

33.0' " " 5" Hedge cor. Post.

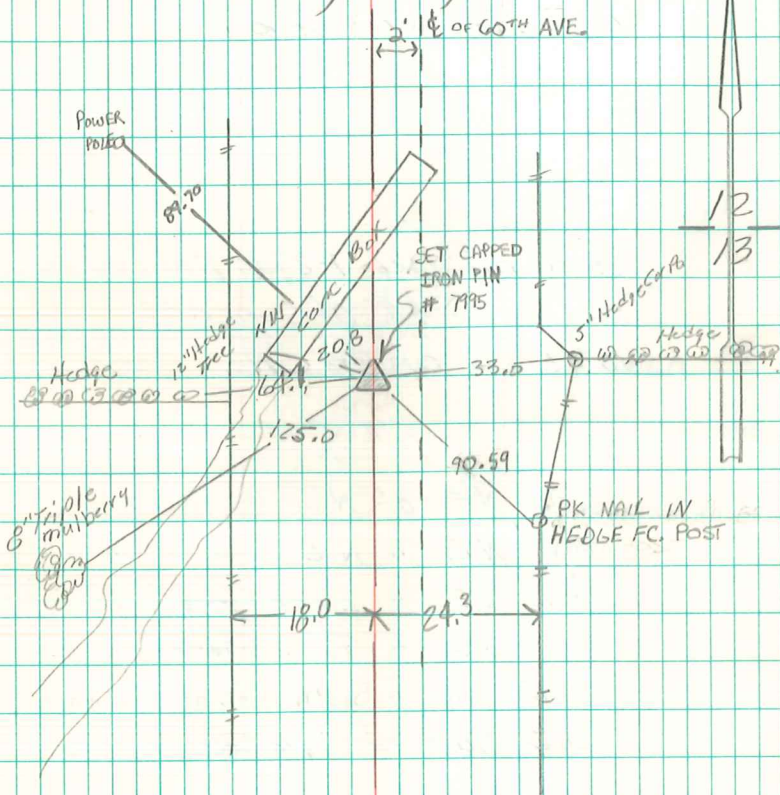
1.5' North of Hedge Fence Line west

1.5' South " " " East

N. 1/4 Cor Sec 13-76-21

Set - Nov - 22 - 1941

Notes: Kennedy - Wells, Keith Mandell



FOUND + RETIED  
BY  
BRIAN MORRISSEY  
8/27/08