

Restablished on old fence line

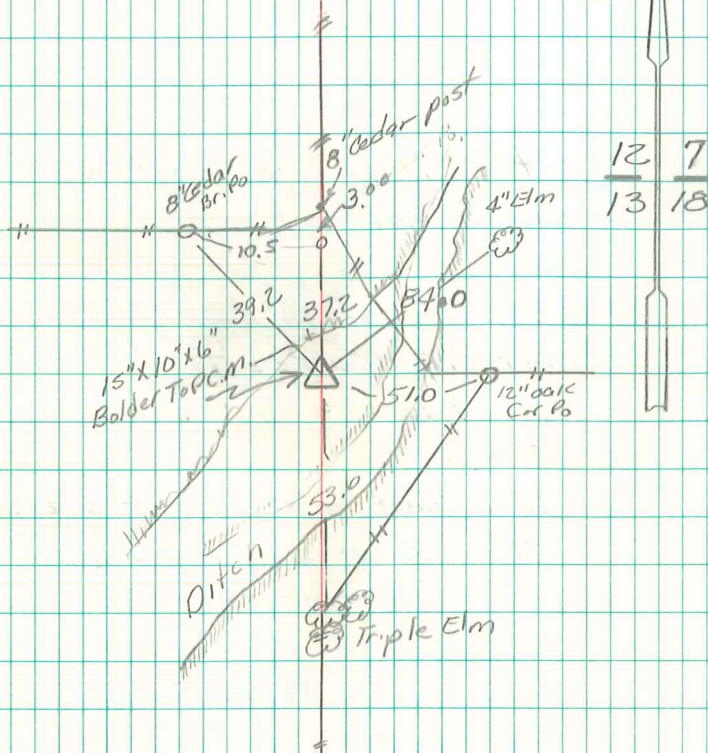
Set C.M. over 1-2" Horse Shoe Tile  
Put Granit bolder 15" x 10" x 6"  
over Top C.M.

53.6' North of Triple Elm Tree  
51.0' West " x Nails in 12" oak Cor Po  
84.5' S.W. " " " " 4" Elm Tree  
37.2' South " " " " 8" Cedar Cor Po  
39.2' S.E. " " " " 8" " Br. Po.

N.E. Cor sec. 13-76-21

Set: Nov. 22 - 1941

Notes: Kennedy, Wells & Keith



Found 24" long piece of C.M. washed out  
and laying in the ditch bottom 40' downstream  
from orig position. Leaned the broken C.M. piece  
against the 8" cedar cor po. N. of the corner. Set 5/8"  
iron pin 3' south of cor. post as a witness to the true  
Cor. in the ditch. Abie Davis 4/20/61