



Document 22-2956

Book 2022 Page 2956 Type CORNR Pages 1
Date 6/02/2022 Time 10:55 AM
Rec Amt \$7.00

NAOMI ELLIS, RECORDER
MARION COUNTY IOWA

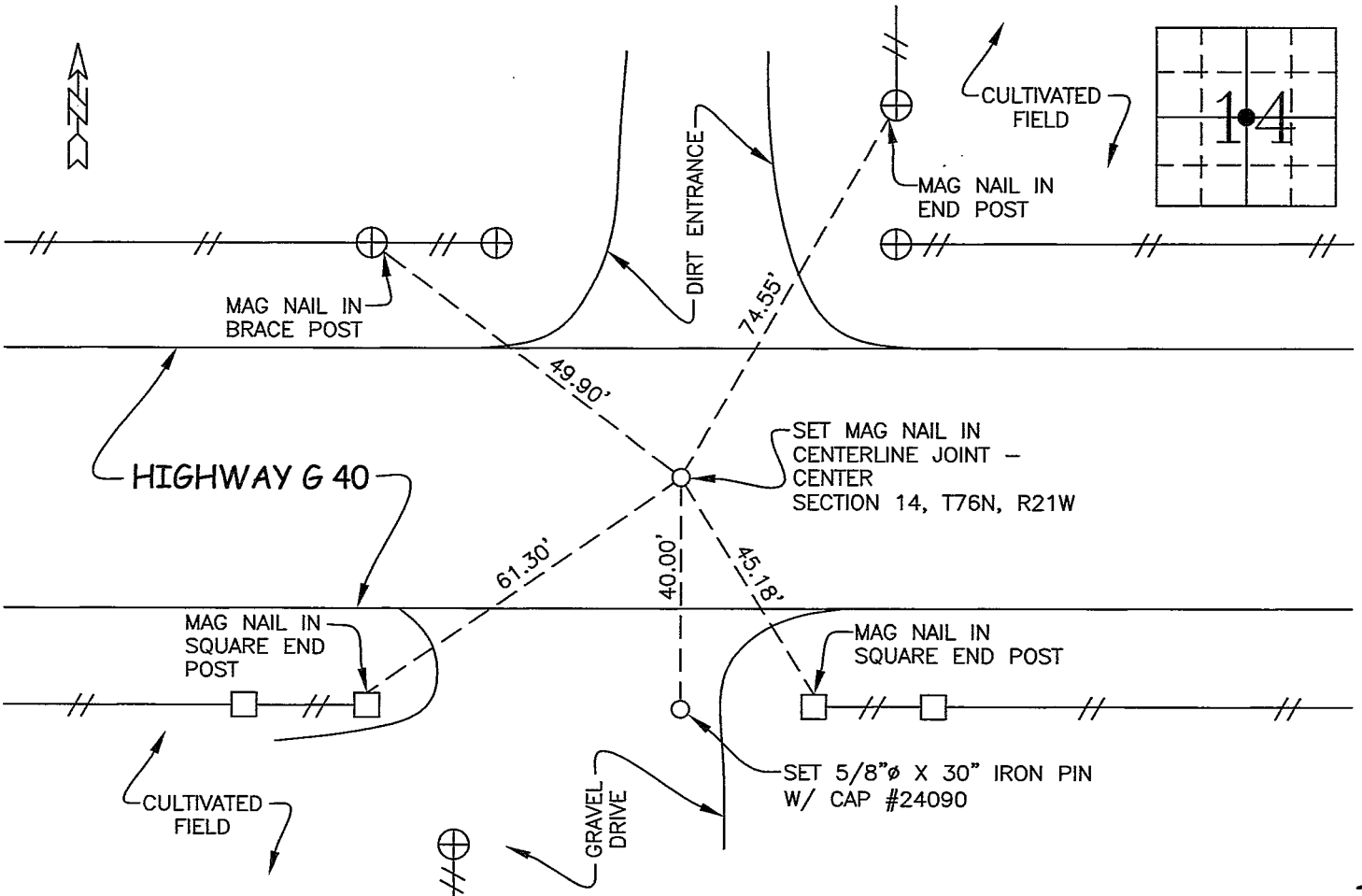
PREPARED BY AND RETURN TO: J. MILLER 610 N. 4TH, SUITE 100 BURLINGTON, IOWA 319-752-3603
UNITED STATES PUBLIC LAND SURVEY CORNER CERTIFICATE

OF

Land survey Monuments situated in Section 14, Township 76N, Range 21W, of the Fifth Principal Meridian, MARION County, Iowa.
Previously recorded in NONE in County Recorder's Office.
(book, page, document number, etc.)

(Show reason for preparing this certificate, the evidence and detailed procedures used in establishing the corner positions and monumentation found or placed)

Monument Description and Remarks: NO CERTIFICATE IS ON FILE FOR THIS CORNER. FOUND MONUMENTS MARKING THE EAST 1/4 CORNER AND WEST 1/4 CORNER OF SECTION 14. PLAT DATED JULY 10, 1854 RECORDED IN SURVEYORS RECORD "B", PAGE 145 INDICATES A DISTANCE OF 20.13 CHAINS ON THE SOUTH LINE OF THE EAST 1/2 OF THE NW 1/4 WHICH AGREES CLOSELY WITH USING THE MIDPOINT OF THE MONUMENTS FOUND AT SAID EAST 1/4 CORNER AND WEST 1/4 CORNER AND WAS USED AS THE METHOD OF RESETTING THE CENTER OF SECTION 14.



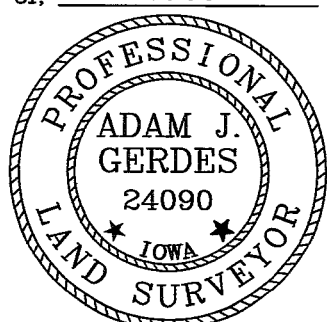
I hereby certify that the survey work was completed and this certificate was prepared by me or under my direct personal supervision and that I am a duly licensed land surveyor under the laws of the state of Iowa.

Signature Adam J. Gerdes
Adam J. Gerdes, PLS

Date: 5/27/22 Lic. No. 24090

My License Renewal Date is December 31, 2022

SEAL



JOB# 8012-1/
22-2085
FIELD BOOK 354, PAGE 74

Corners	List Corners to be Indexed		
	Section	Twp	Range
CENTER	14	76N	21W

DRAWN BY: BSS

Plattbeck-Rett Klingner & Assoc.

1-1