

Prepared by: Abie C. Davis, P.E. & L.S., 1428 Oregon St., Knoxville, Iowa 50138 Phone: (515) 842-5863

# UNITED STATES PUBLIC LAND SURVEY CORNER CERTIFICATE

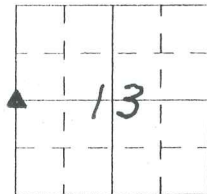
SLS19-94

Land survey Monuments situated in Section 13, Township 76 N, Range 21 W, of the Fifth Principal Meridian, Marion County, Iowa.

Previously recorded in Bk 3, Pg 297 in County Recorders Office.

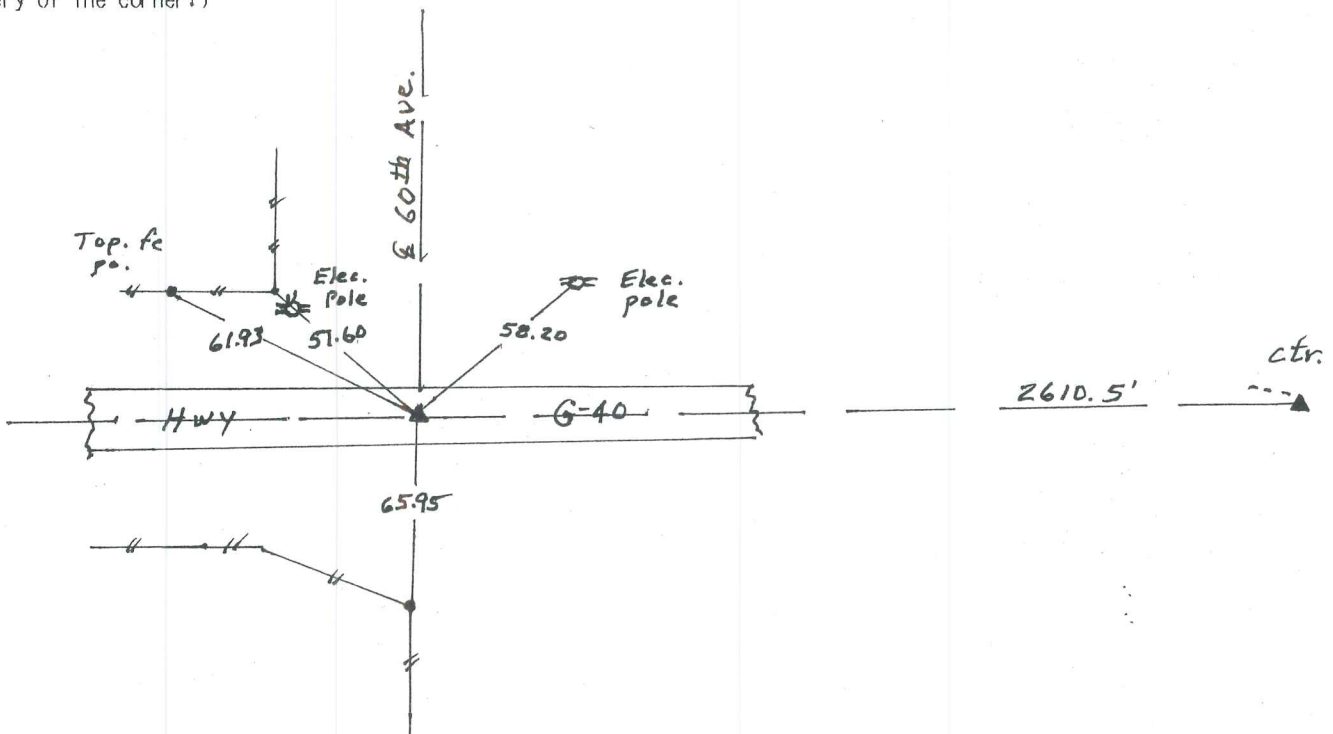
Show reason for preparing this certificate, the evidence and detailed procedures used in establishing the corner positions and monumentation found or placed

Monument Description and Remarks: Found Pk. nail in asphalt pavement matching current ties. Set out new ties.



## PLAN - VIEW

(Show a minimum of three reference ties to durable physical objects, relevant monuments and physical conditions that will enable recovery of the corner.)



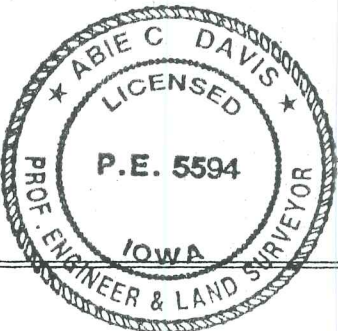
I hereby certify that the survey work was completed and this land surveying document was prepared by me or under my direct personal supervision and that I am a duly licensed land surveyor under the laws of the state of Iowa

Signature: Abie C. Davis  
Abie C. Davis, P.E. & L.S.

Date: 5/29/2014 Reg. No. 5594

My license renewal date is December 31, 2015

SEAL



### List Corners to be Indexed

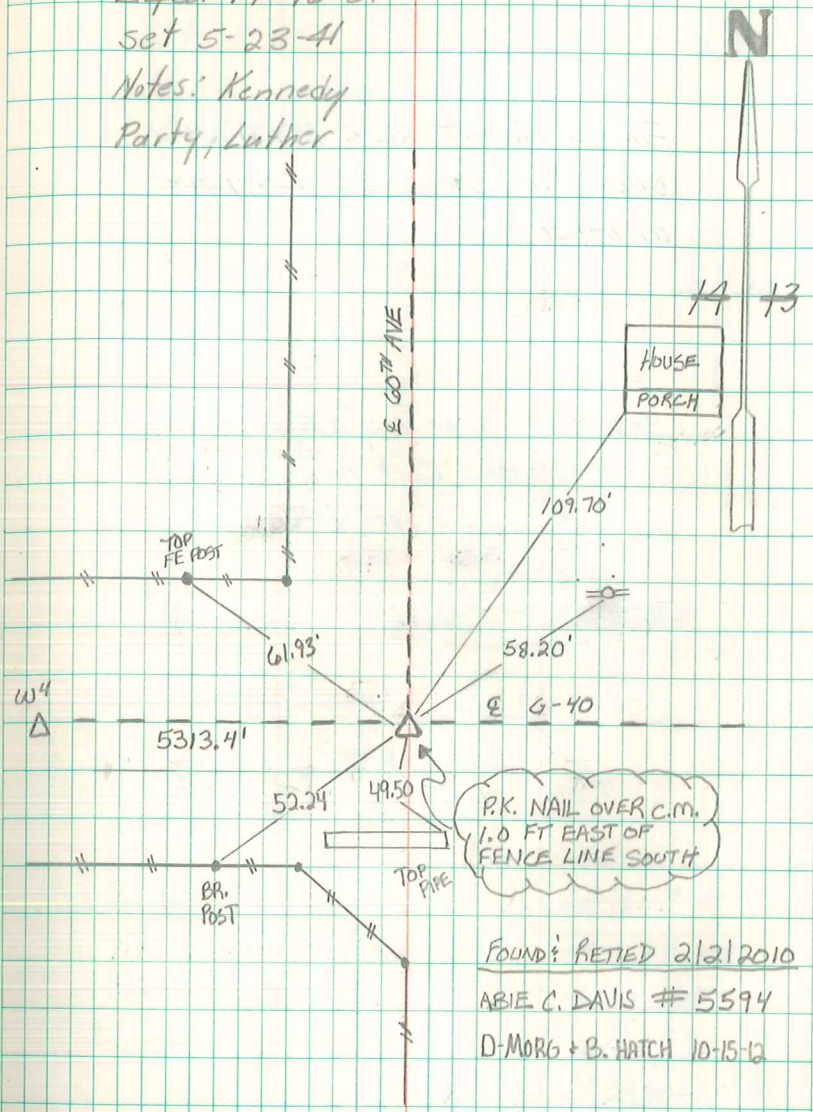
Corners	Section	Twp	Range
W4	13	76 N	21 W

Found  $1\frac{1}{4}$ " P.P.C. 8" Long with buggy  
bow in it over 2-2" D tile Broken  
in Pieces.

Put P.P.C. & buggy bow in Hole Pieces  
of 2" D tile on TOP P.P.C. set C.M.  
on Tile

TOP C.M. 10" Under Surface

E<sup>4</sup> Cor 14-76-21  
set 5-23-41  
Notes: Kennedy  
Party, Luther



FOUND & RETIED 2/2/2010  
ABIE C. DAVIS # 5594  
D. MORG + B. HATCH 10-15-12