

Instr. Number: 20-5482  
 BK: 2020 PG: 5482  
 Recorded: 9/25/2020 at 9:32:35.0 AM  
 County Recording Fee: \$7.00  
 Iowa E-Filing Fee: \$3.13  
 Combined Fee: \$10.13  
 Revenue Tax:  
 KAREN SCHWANEBECK, RECORDER  
 Marion County, Iowa

PREPARED BY & RETURN TO ERIC MILLER, SNYDER & ASSOCIATES, INC. 2727 SW SNYDER ROAD, ANKENY, IOWA 50023 (515) 964-2020

## UNITED STATES PUBLIC LAND SURVEY CORNER CERTIFICATE OF

Land Survey Monuments situated in Section 15, Township 76, Range 21 W, of the Fifth Principal Meridian, MARION, County, Iowa. Previously recorded in BOOK 2014 PAGE 603 in County Recorder's Office.  
 (book, page, document number, ect.)

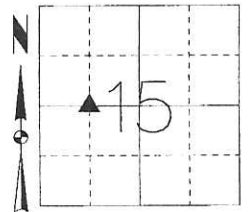
(Show reason for preparing this certificate, the evidence and detailed procedures used in establishing the corner positions and monumentation found or placed.)

**Monument Description and Remarks:**

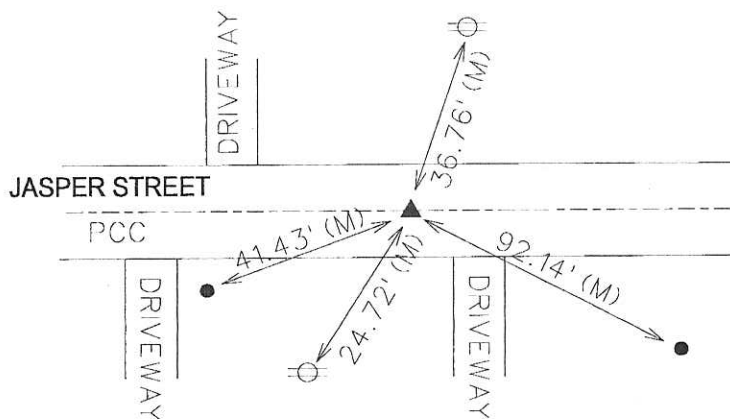
NW CORNER, NE1/4, SW1/4 15-76-21  
 POSITION OF MONUMENT WAS SURVEYED PRIOR TO RECONSTRUCTION OF JASPER ST. USED RECORDED CORNER CERTIFICATE TO FIND MAG AS DESCRIBED IN CERTIFICATE. AFTER CONSTRUCTION, RESET SECTION CORNER IN SAME LOCATION AS CUT "X" IN CONCRETE PAVEMENT. THIS CERTIFICATE IS BEING FILED BECAUSE THE PREVIOUS MONUMENT AND TIES HAVE BEEN DESTROYED DUE TO THE CONSTRUCTION OF THE JASPER STREET PROJECT.

**Plan-View**

(Show a minimum of three reference ties to durable physical objects, relevant monuments and physical conditions that will enable recovery of the corner.)



NW Corner NE 1/4, SW 1/4  
 Section 15-76-21  
 SET CUT "X"



NOTE: ALL DISTANCES MEASURED HORIZONTAL UNLESS OTHERWISE NOTED.

EMILLER  
 9/24/2020  
 I:\Survey\Section\_Corner\S&A\_Section\_Certificate\TWP\_RNG\_SEC\_PROJECT\_NUM\76\_21\_15\_NWCorNE\_SW\_1170319.dwg

S&A Fnd3



I hereby certify that this land surveying document was prepared and the related survey work was performed by me or under my direct personal supervision and that I am a duly licensed Land Surveyor under the laws of the State of Iowa.

*Eric J. Miller* 9-24-20  
 Eric J. Miller, PLS Date

License Number 19515  
 My License Renewal Date is December 31, 2020  
 Pages or sheets covered by this seal:  
 SHEET 1 OF 1

List Corners to be Indexed

Corners	Section	Twp	Range
NW CORNER NE1/4, SW1/4	15	76	21

TECH: SRM/EJM PN: 76 21-15-N1/4SW1/4 1170319 DATE: 9/24/20

Return to: Thomas Land Surveying, LLC \* 6230 90th Avenue, Indianola, IA 50125 \* 515.494.6663

# UNITED STATES PUBLIC LAND SURVEY CORNER CERTIFICATE OF

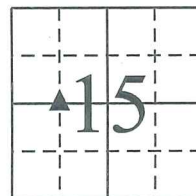
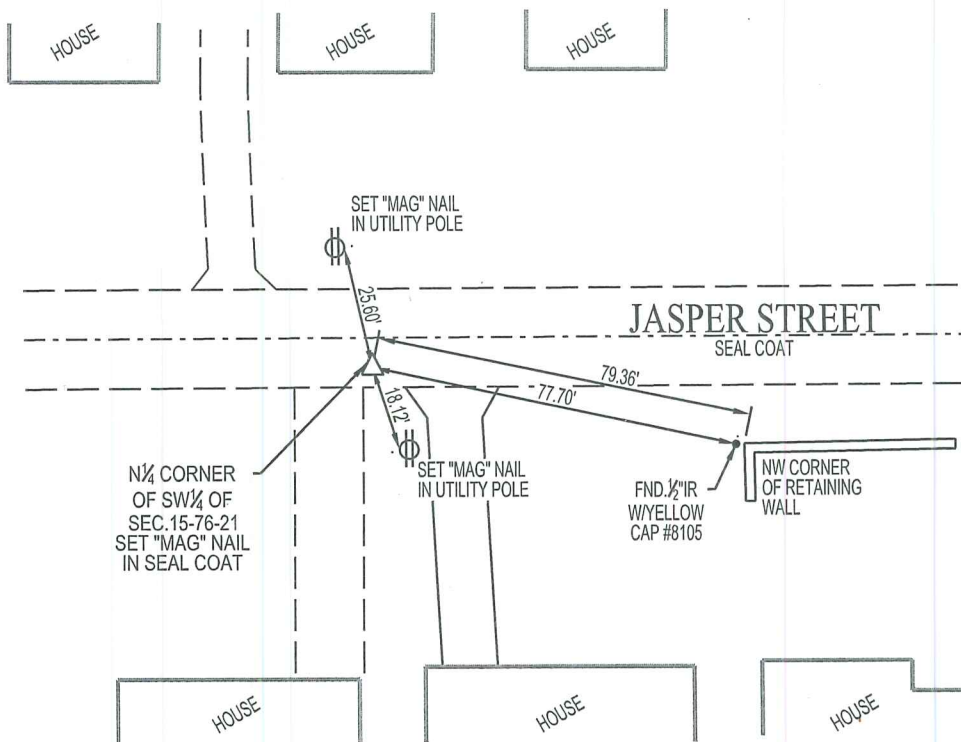
Land Survey Monuments situated in Section 15, Township 76 North, Range 21 West, of  
the Fifth Principal Meridian, Marion County, Iowa.

Previously recorded in No Record in the Marion County Recorder's Office.

Monument Description and Remarks: SET "MAG" NAIL IN SEAL COAT AT LOCATION DETERMINED AFTER RETRACEMENT OF LOT 10 OF  
THE NORTHWEST QUARTER OF THE SOUTHWEST QUARTER OF SECTION 15-76-21. SET REFERENCE TIES PER CODE OF IOWA.

ALL REFERENCE TIES WERE CHECKED PLUMB.

## PLAN - VIEW



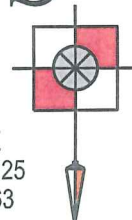
## LEGEND

- ▲ FOUND SECTION CORNER MONUMENT
- FOUND MONUMENT
- I FOUND CHISELED "X" IN RIGHT-OF-WAY RAIL
- ⊗ FND "X" NAILS IN FENCE POST
- △ SECTION CORNER SET 5/8" I.R. W/BBLUE CAP #19968 (UNLESS NOTED)
- SET 5/8" I.R. W/BBLUE CAP #19968
- × SET "X" NAILS IN FENCE POST
- I.P. IRON PIPE
- I.R. IRON ROD (REROD)
- (M) MEASURED DIMENSION
- (R) RECORDED DIMENSION
- SECTION LINE
- \*- FENCE LINE

# TLS

THOMAS  
LAND  
SURVEYING, LLC

6230 90th AVENUE  
INDIANOLA, IA 50125  
TELE.: 515.494.6663



### N<sup>1</sup>/<sub>4</sub> CORNER OF SW<sup>1</sup>/<sub>4</sub> OF SECTION 15 - T76N - R21W

IOWA SOUTH STATE PLANE COORDINATE  
N=504,894.4730  
E=1,704,416.8960



I hereby certify that this land surveying document was prepared and the related survey work was performed by me or under my direct personal supervision and that I am a duly licensed Professional Land Surveyor under the laws of the State of Iowa.

Signature: Matthew J. Thomas Date: 02-19-2014

Name: (Printed or typed) Matthew J. Thomas

License Number 19968

My license renewal date is December 31, 2015

Pages or sheets covered by this seal: 1 of 1

## Corner to be Indexed

Corners Section-Township-Range  
N<sup>1</sup>/<sub>4</sub> CORNER OF SW<sup>1</sup>/<sub>4</sub> OF  
SECTION 15 - T76N - R21W