

Instr. Number: 20-5483  
 BK: 2020 PG: 5483  
 Recorded: 9/25/2020 at 9:32:36.0 AM  
 County Recording Fee: \$7.00  
 Iowa E-Filing Fee: \$3.13  
 Combined Fee: \$10.13  
 Revenue Tax:  
 KAREN SCHWANEBECK, RECORDER  
 Marion County, Iowa

PREPARED BY & RETURN TO ERIC MILLER, SNYDER & ASSOCIATES, INC. 2727 SW SNYDER ROAD, ANKENY, IOWA 50023 (515) 964-2020

## UNITED STATES PUBLIC LAND SURVEY CORNER CERTIFICATE OF

Land Survey Monuments situated in Section 15, Township 76, Range 15 W, of the Fifth Principal Meridian, MARION, County, Iowa. Previously recorded in BOOK 2008 PAGE 853 in County Recorder's Office.  
 (book, page, document number, ect.)

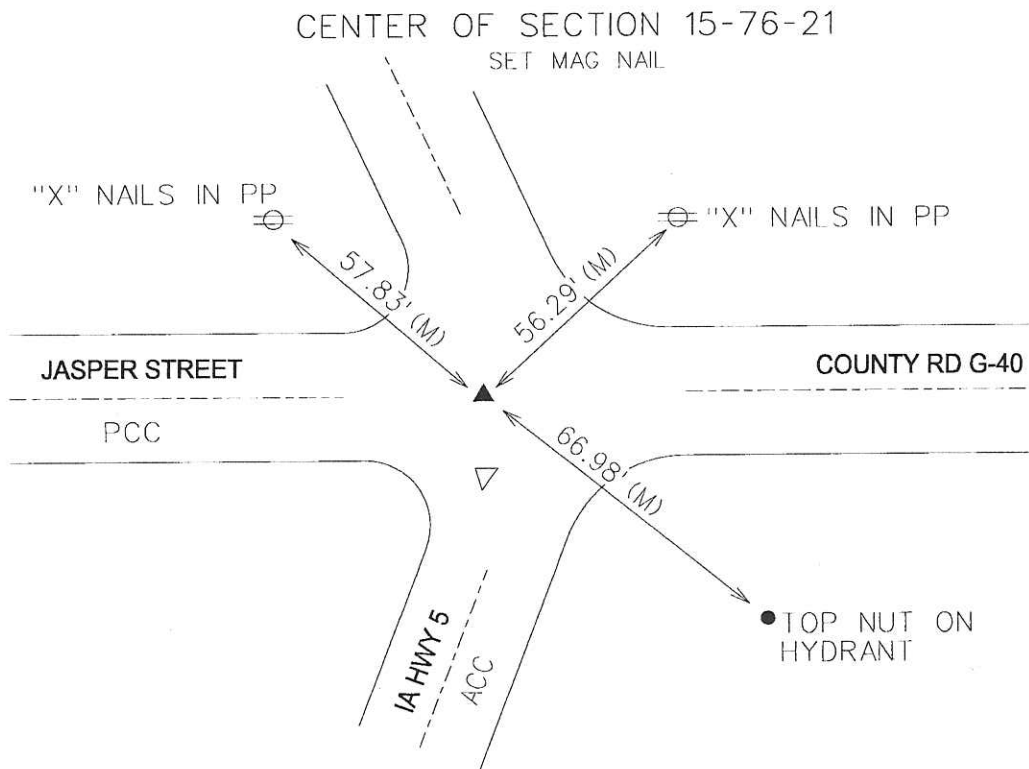
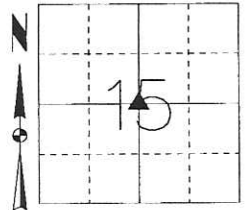
(Show reason for preparing this certificate, the evidence and detailed procedures used in establishing the corner positions and monumentation found or placed.)

Monument Description and Remarks:

CENTER OF SECTION 15-76-21  
 POSITION OF MONUMENT WAS SURVEYED PRIOR TO RECONSTRUCTION OF JASPER ST USING RECORDED CERTIFICATE. AFTER CONSTRUCTION, RESET SECTION CORNER IN SAME LOCATION WITH MAG NAIL. THIS CERTIFICATE IS BEING FILED BECAUSE THE PREVIOUS MONUMENT AND TIES HAVE BEEN DESTROYED DUE TO THE CONSTRUCTION OF THE JASPER STREET PROJECT.

Plan-View

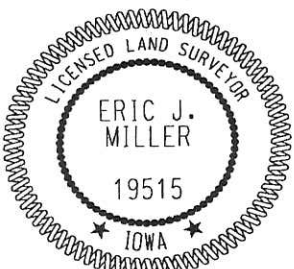
(Show a minimum of three reference ties to durable physical objects, relevant monuments and physical conditions that will enable recovery of the corner.)



NOTE: ALL DISTANCES MEASURED HORIZONTAL UNLESS OTHERWISE NOTED.

EMILLER  
 9/24/2020  
 I:\Survey\Section\_Corner\S&A\_Section\_Certificate\TWP\_RNG\_SEC\_PROJECT\_NUM\76\_21\_15\_CTR\_1170319.dgn

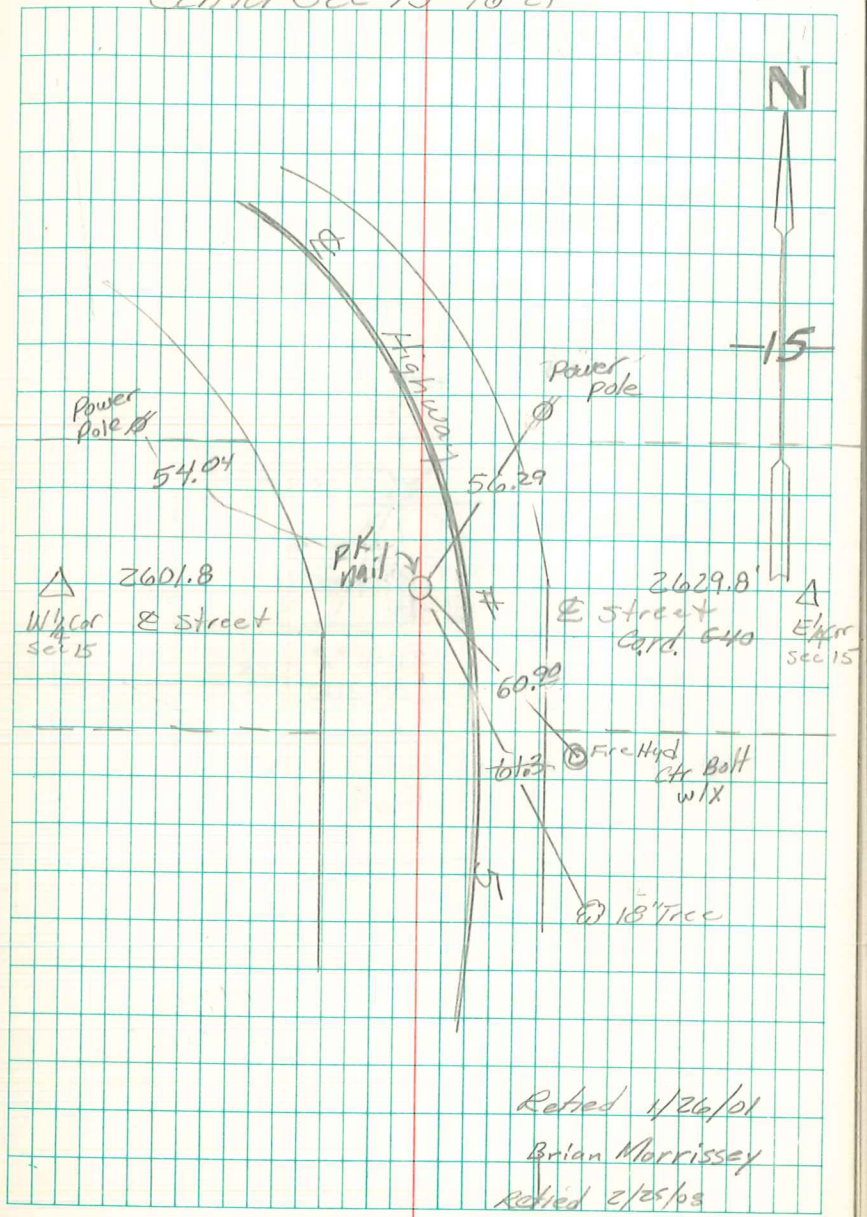
S&A Fnd2



I hereby certify that this land surveying document was prepared and the related survey work was performed by me or under my direct personal supervision and that I am a duly licensed Land Surveyor under the laws of the State of Iowa.  
*Eric J. Miller* 9-24-20  
 Eric J. Miller, PLS Date  
 License Number 19515  
 My License Renewal Date is December 31, 2020  
 Pages or sheets covered by this seal:  
 SHEET 1 OF 1

List Corners to be Indexed			
Corners	Section	Twp	Range
CENTER OF SECTION	15	76	21

TECH: SRM/EJM PN: 76-21-15-CTR 1170319 DATE: 9/24/20



Revised 1/26/01  
 Brian Morrissey  
 Revised 2/25/03