

2018-2462

Prepared by Abie C. Davis, P.E. & L.S., 1428 Oregon St., Knoxville, IA 50138 (641) 842-5863

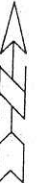
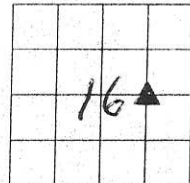
UNITED STATES PUBLIC LAND SURVEY CORNER CERTIFICATE  
OF

Land survey Monuments situated in Section 16, Township 76 N, Range 21 W, of the Fifth Principal Meridian, Marion County, Iowa.

Previously recorded in Bk 2 Pg 120 in County Records Office.

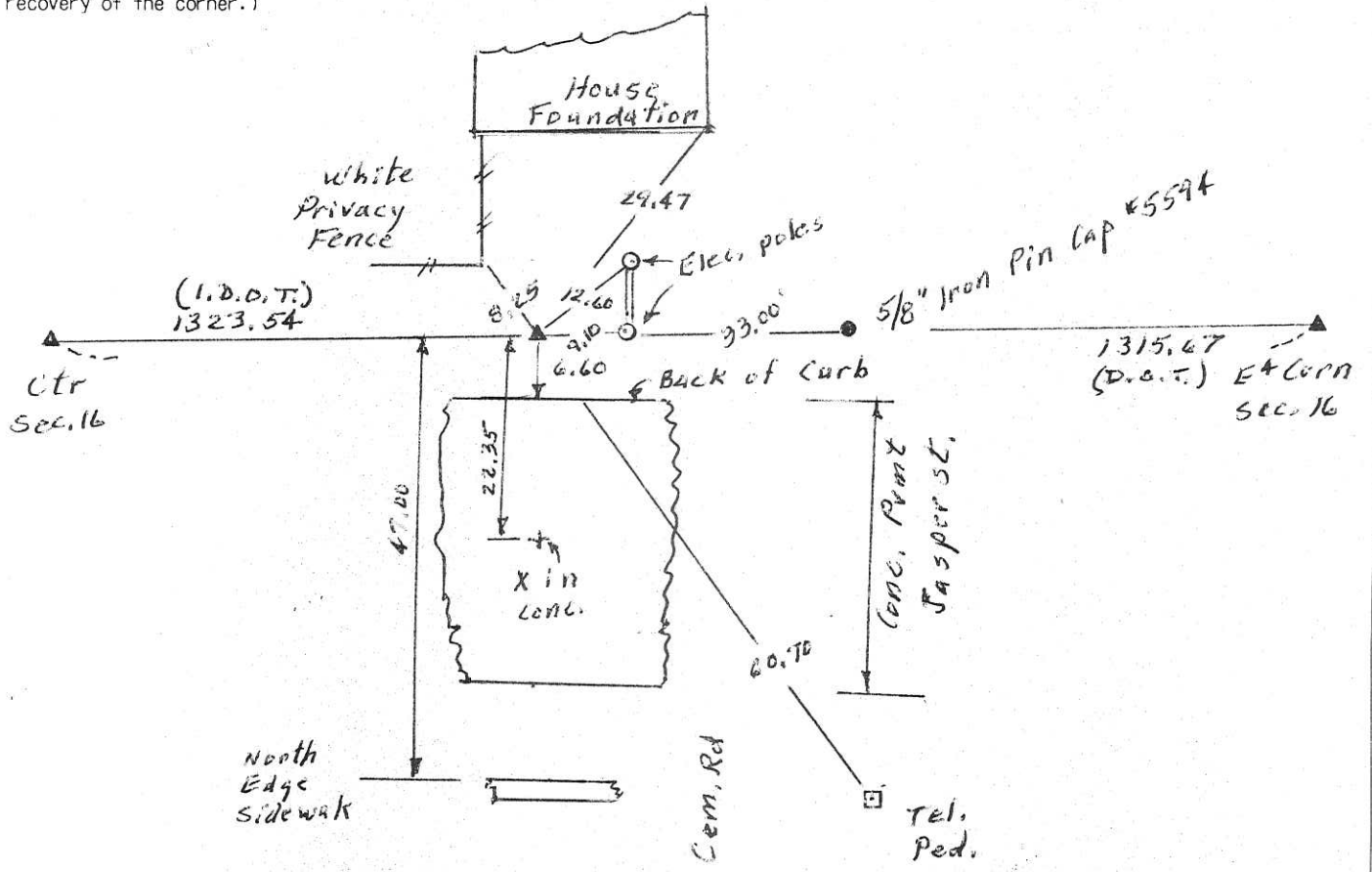
Show reason for preparing this certificate, the evidence and detailed procedures used in establishing the corner positions and monumentation found or placed

Monument Description and Remarks: 3/8" Iron Pin cap # Alum.  
L.D.O.T. set 4/13/2000 was gone from constr. work,  
Corner was reset with 5/8" Iron Pin Cap # 5594  
previously. Set out new ties.



PLAN - VIEW

(Show a minimum of three reference ties to durable physical objects, relevant monuments and physical conditions that will enable recovery of the corner.)



I hereby certify that the survey work was completed and this land surveying document was prepared by me or under my direct personal supervision and that I am a duly licensed land surveyor under the laws of the state of Iowa

Signature: Abie C. Davis  
Abie C. Davis, P.E. & L.S.  
Date: 6/11/18 Reg. No. 5594

My license renewal date is December 31, 2019

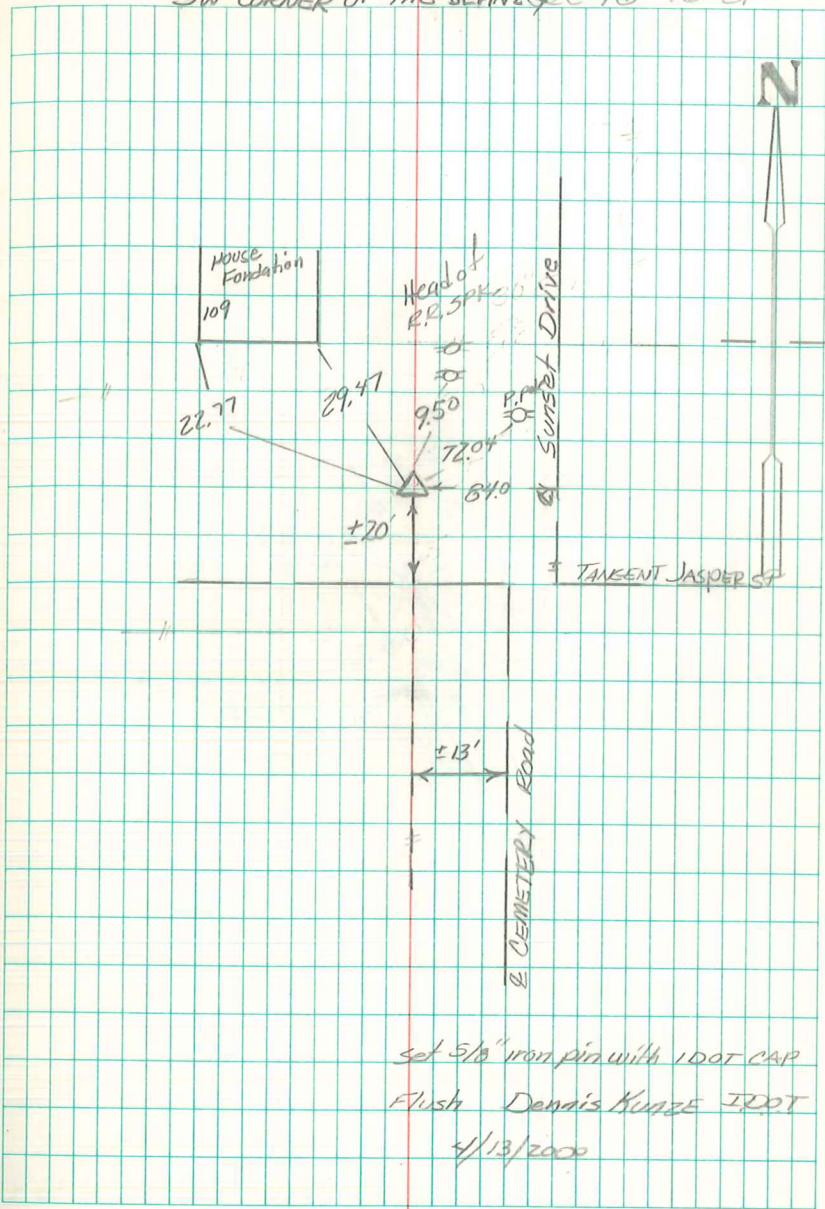
SEAL



List Corners to be Indexed  
Corners Section Twp Range

N<sup>4</sup> Corn 16 76 N 21 W  
SE<sup>4</sup>

SW CORNER OF THE SEAMING REC 16-76-21



set 5/8" iron pin with 1DOT CAP  
 Flush Dennis KUNZE IDOT  
 4/13/2000