

Instr. Number: 20-5481  
 BK: 2020 PG: 5481  
 Recorded: 9/25/2020 at 9:32:34.0 AM  
 County Recording Fee: \$7.00  
 Iowa E-Filing Fee: \$3.13  
 Combined Fee: \$10.13  
 Revenue Tax:  
 KAREN SCHWANEBECK, RECORDER  
 Marion County, Iowa

PREPARED BY & RETURN TO ERIC MILLER, SNYDER & ASSOCIATES, INC. 2727 SW SNYDER ROAD, ANKENY, IOWA 50023 (515) 964-2020

## UNITED STATES PUBLIC LAND SURVEY CORNER CERTIFICATE OF

Land Survey Monuments situated in Section 15, Township 76, Range 21 W, of the Fifth Principal Meridian, MARION, County, Iowa.  
 Previously recorded in N/A in County Recorder's Office.  
 (book, page, document number, ect.)

(Show reason for preparing this certificate, the evidence and detailed procedures used in establishing the corner positions and monumentation found or placed.)

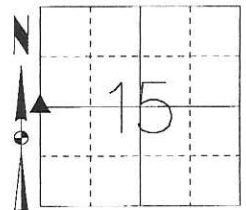
### Monument Description and Remarks:

W1/4 CORNER 15-76-21

POSITION OF MONUMENT WAS SURVEYED PRIOR TO RECONSTRUCTION OF JASPER ST. ORIGINAL MONUMENT WAS MAG NAIL. NO RECORDED CERTIFICATE WAS FOUND DURING ORIGINAL RESEARCH, BUT USED SURROUNDING PLAT DIMENSIONS TO CONFIRM MONUMENT LOCATION AS SECTION CORNER. AFTER CONSTRUCTION, RESET SECTION CORNER IN SAME LOCATION AS CUT "X" IN CONCRETE PAVEMENT. THIS CERTIFICATE IS BEING FILED BECAUSE THE PREVIOUS MONUMENT HAS BEEN DESTROYED DUE TO THE CONSTRUCTION OF THE JASPER STREET PROJECT.

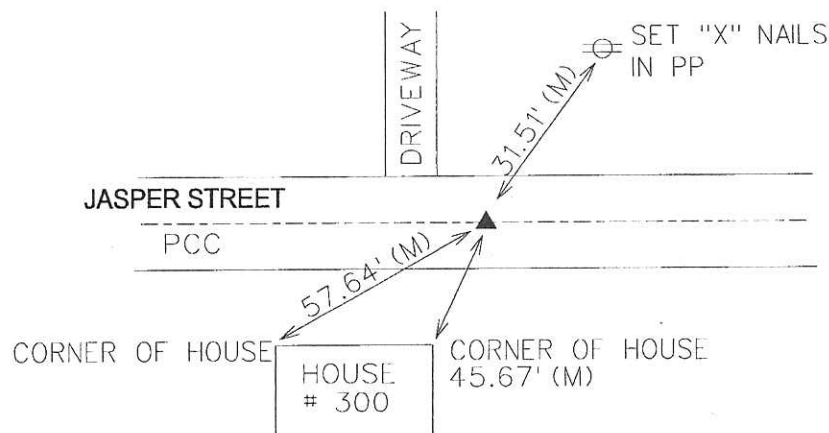
### Plan-View

(Show a minimum of three reference ties to durable physical objects, relevant monuments and physical conditions that will enable recovery of the corner.)



W1/4 CORNER  
 SEC. 15-76-21

SET CUT "X"



NOTE: ALL DISTANCES MEASURED HORIZONTAL UNLESS OTHERWISE NOTFD.

EMILLER  
 9/24/2020  
 F:\Survey\Section\_Corners\S&A\_Section\_Certificate\TWP\_RNG\_SEC\_PROJECT\_NUM\76-21-15-W-1170319.dgn

S&A Fnd4



I hereby certify that this land surveying document was prepared and the related survey work was performed by me or under my direct personal supervision and that I am a duly licensed Land Surveyor under the laws of the State of Iowa.

*Eric J. Miller* 9-24-20  
 Eric J. Miller, PLS Date

License Number 19515  
 My License Renewal Date is December 31, 2020  
 Pages or sheets covered by this seal:  
 SHEET 1 OF 1

### List Corners to be Indexed

Corners	Section	Twp	Range
W1/4 CORNER	15	76	21
E1/4 CORNER	16	76	21

TECH: SRM/EJM PN: 76-21-15-W 1170319 DATE: 9/24/20

Found Hub set by R.T. Johnson  
on a Former Survey

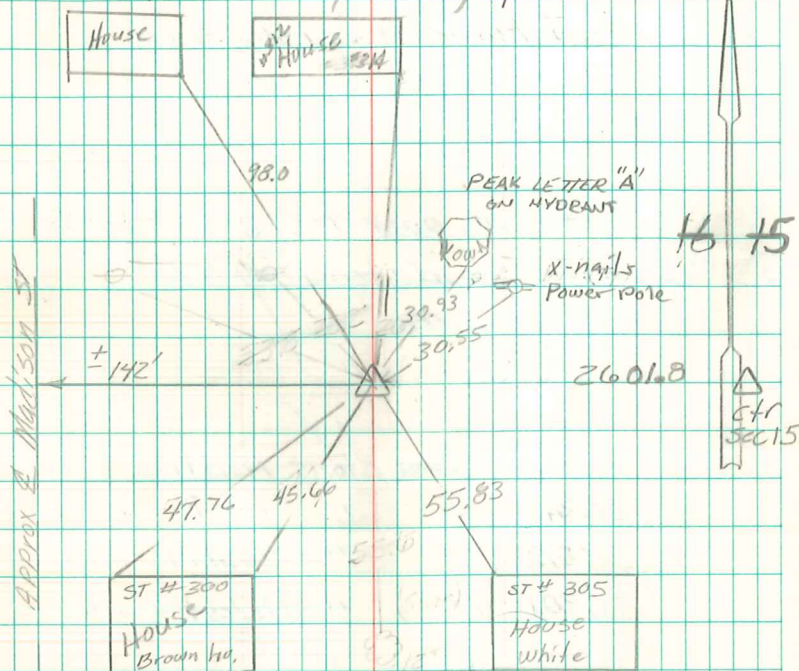
Set C.M. over 1-2"  $\phi$  Tile  
Put a chunk of Concrete  
10" x 6" x 4" on Top C.M.

58.0' N.E. of N.W. Corner house  
46.0' N.E. " N.E. " "  
33.8' S.E. " Light Pole  
22.2' S.E. " Tele. Pole  
26.3' South " South Side of side walk  
1320.0' East of  $\frac{1}{4}$  Cor.

E.  $\frac{1}{4}$  Cor Sec 16-76-21

Set - Nov - 24 - 1941

Notes: Kennedy - Wells, Biglow & Shore



Found  $\frac{5}{8}$ " iron pin with  
I DOT CAP # 6707

Retred 4/13/2000  
Dennis Kunze I DOT