



Document 20-6186

Book 2020 Page 6186 Type CORNR Pages 1

Date 10/26/2020 Time 11:29 AM

Rec Amt \$7.00

KAREN SCHWANEBECK, RECORDER

MARION COUNTY IOWA

Prepared By: J. Brian Morrissey, Morrissey Surveying & Consulting, LLC, 1405 Hwy. G28, Otley, Ia. 50214, 515-480-2531

# UNITED STATES PUBLIC LAND SURVEY CORNER CERTIFICATE OF

Land Survey Monuments situated in Section 16, Township 76N, Range 21W, of the Fifth Principal Meridian, Marion County, Iowa. Previously recorded in Bk. 2, P. 92 in the County Recorder's Office.  
(book, page, document number, etc.)

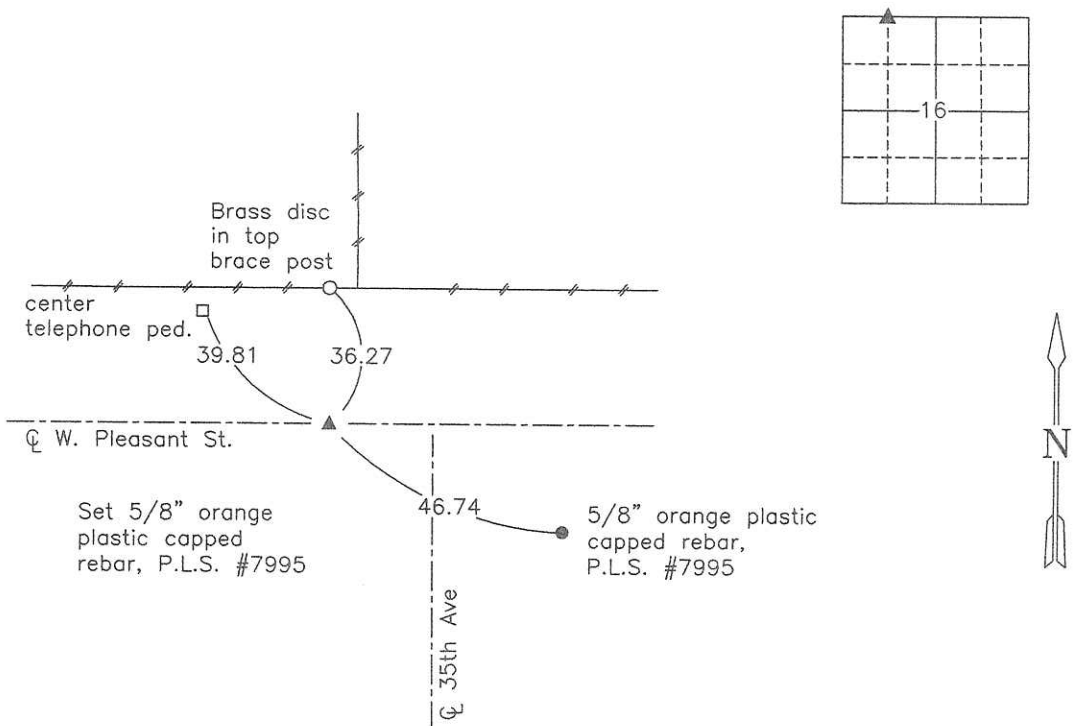
(Show reason for preparing this certificate, the evidence and detailed procedures used in establishing the corner positions and monumentation found or placed.)

Monument Description and Remarks: Monument called for on previous certificate not found. Set 5/8" x 18" orange plastic capped rebar, P.L.S. #7995, at midpoint and on line between found N 1/4 Corner and NW Corner of Section as per previous Certificate.

This Corner was used for a Retracement Plat of Survey in the NE 1/4 of the NW 1/4 & NW 1/4 of the NE 1/4 of Sec. 16.

## PLAN VIEW

(Show a minimum of three reference ties to durable physical objects, relevant monuments and physical conditions that will enable recovery of the corner.)



NW Cor., NE 1/4 of the NW 1/4, Section 16

Date of Survey: 7/23/20

NOTE: ALL TIES TO BRASS DISK OR YELLOW/ORANGE SURVEY MARKER UNLESS NOTED.



I hereby certify that this land surveying document was prepared and the related survey work was performed by me or under my direct personal supervision and that I am a duly Licensed Land Surveyor under the laws of the state of Iowa.

Signature: J. Brian Morrissey Date: 10/19/20  
J. Brian Morrissey

License number 7995.

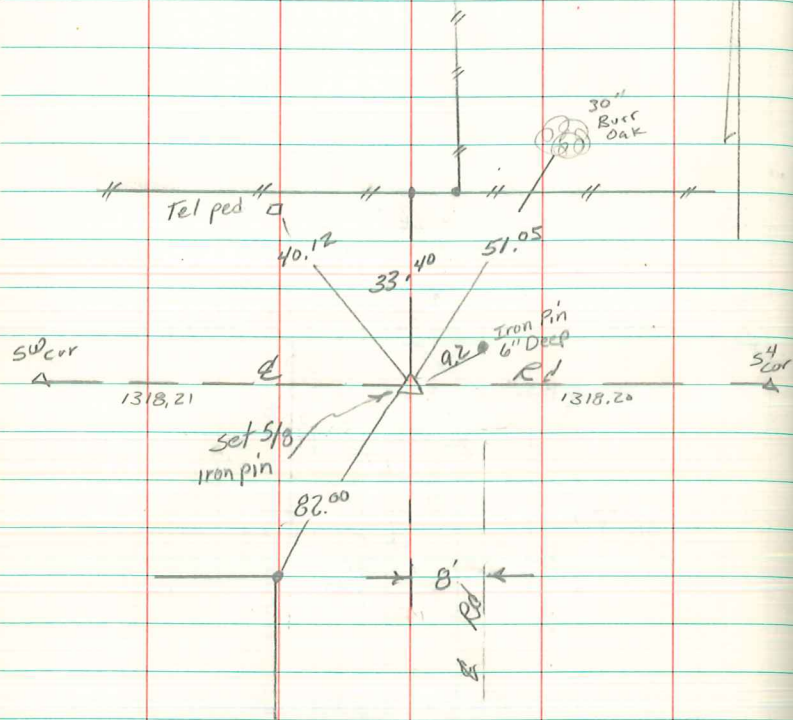
My license renewal date is December 31, 2021

1052-20-1/2

Pd \$7.00 CK - Ret Morrissey Surveying

SE Corner SW<sup>4</sup>SW<sup>4</sup>

Section 9, 76-21



Set at mid-point of line between SW<sup>4</sup> and S<sup>4</sup> cor.  
Previous cert. used iron pin set by DOT as 1/4<sup>1</sup>/<sub>4</sub> corner.  
It had been set as a reference to E of road South.

Abie Davis 1/10/00