

Prepared by: Abie C. Davis, P.E. & L.S., 1428 Oregon St., Knoxville, Iowa 50138 Phone: (515) 842-5863

# UNITED STATES PUBLIC LAND SURVEY CORNER CERTIFICATE

SL-S19-94

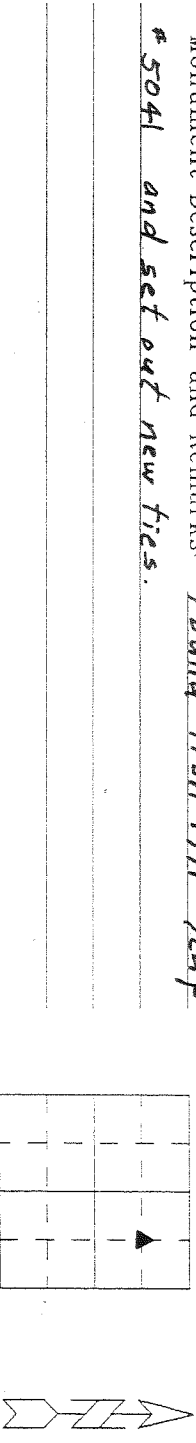
Land survey Monuments situated in Section 16, Township 76N, Range

21W, of the Fifth Principal Meridian, Marion County, Iowa.

Previously recorded in Book 2, Page 120 in County Recorder's Office.

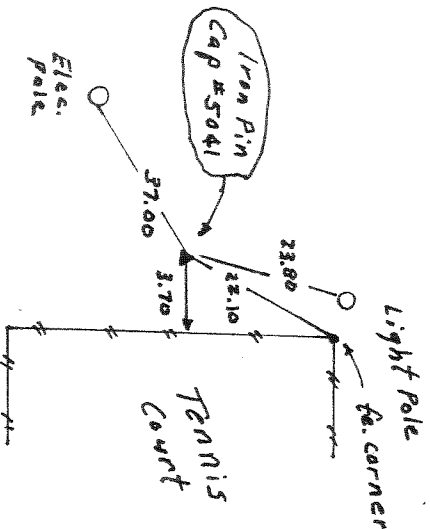
Show reason for preparing this certificate, the evidence and detailed procedures used in establishing the corner positions and monumentation found or placed

Monument Description and Remarks: Found Iron Pin w/cap # 5041 and set out new ties.



## PLAN - VIEW

(Show a minimum of three reference ties to durable physical objects, relevant monuments and physical conditions that will enable recovery of the corner.)



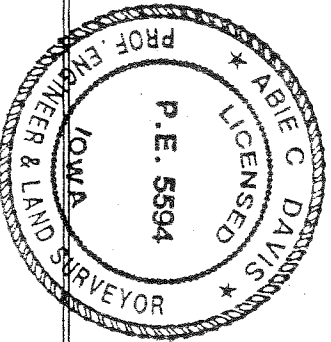
I hereby certify that the survey work was completed and this land surveying document was prepared by me or under my direct personal supervision and that I am a duly licensed land surveyor under the laws of the state of Iowa

Signature: Abie C. Davis  
Abie C. Davis, P.E. & L.S.

Date: 5/7/14 Reg. No. 5594

My license renewal date is December 31, 2015

SEAL

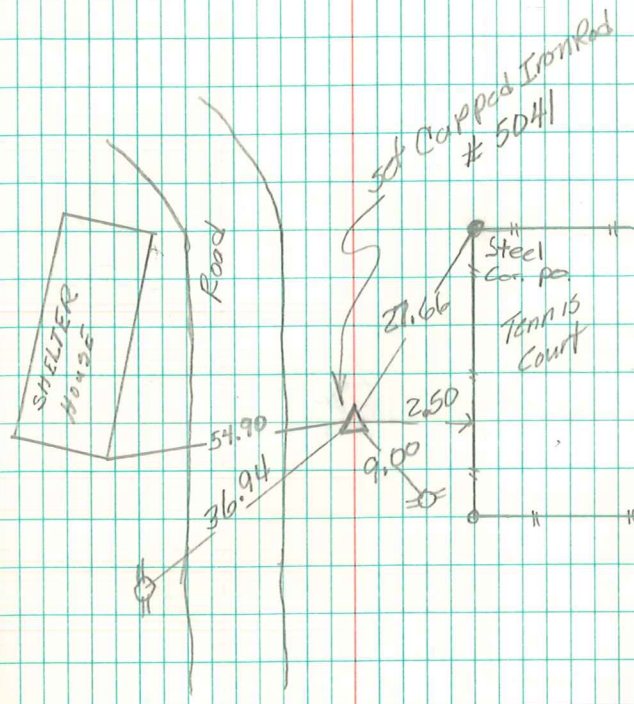


List Corners to be Indexed

Corners	Section	Twp	Range
NE Corn.	16	76N	21W
SW & NE			

S.E. Cor. N.W. 1/4 - N.E. 1/4 Sec 16-76-21

set 11-81 = By Vance & Hochstetler P.C.  
Winterset Iowa



RETIED 7 JUNE 93  
IDOT

4/13/2000 Dennis Kuntz IDOT