

Found Granit Rock 16"x8"x6"  
1-1/2" D Tile

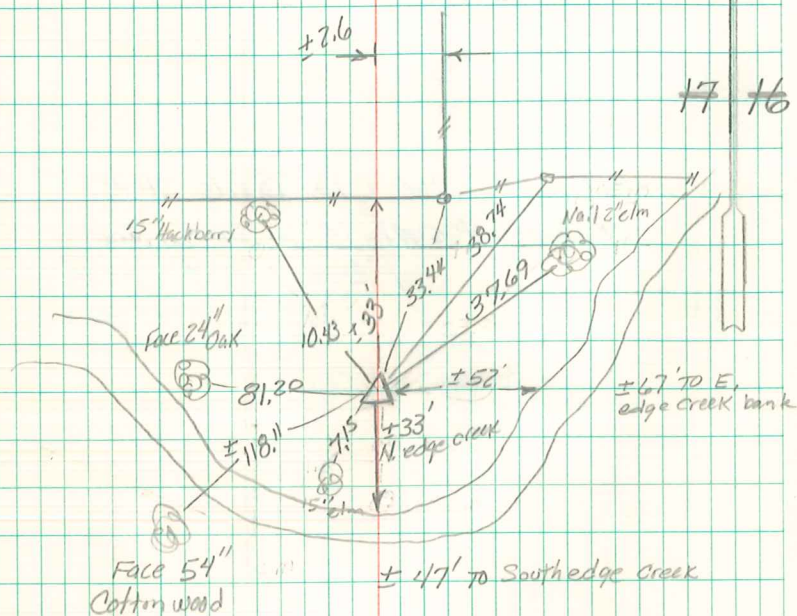
Set C.M. over 1-1/2" D Tile & Put  
Stone on Top

C.M. 8" below Surface

E<sup>4</sup> Cor 17-76-21

Set 7-3-40

Notes: Wigram



Set Conc. Mand. 6" Exposed

Revised 4/13/2000

Dennis Kunze I.D.O.T.