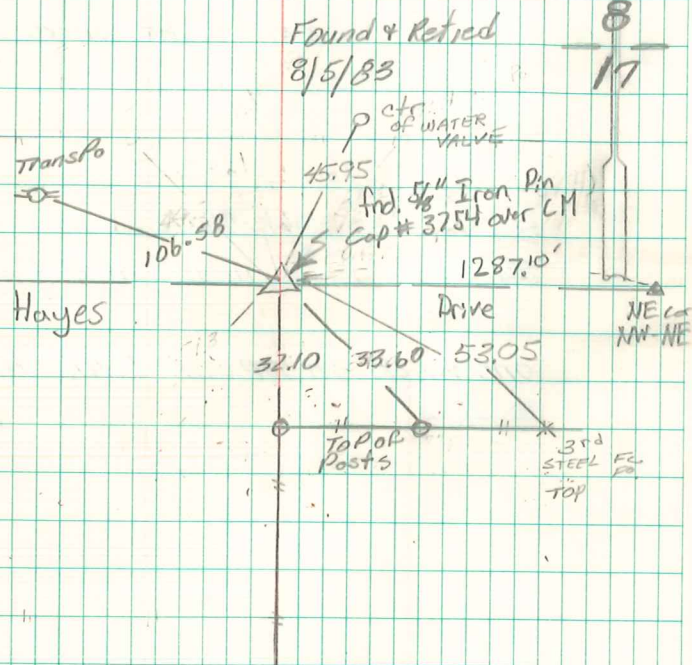


Found 1-3" & 2-2" Tile Filled with
Concrete
6" South of where we set mon.

Left evidence as we Found
it. set c.m. 6" North.

the top c.m. 14" below top
surface

N $\frac{1}{4}$ Cor 17-76-21
set. 10-11-40
Notes: Kennedy



FOUND & RETRIED
4/29/1985
Moll & PRISON
2/16/84 Abie Davis