

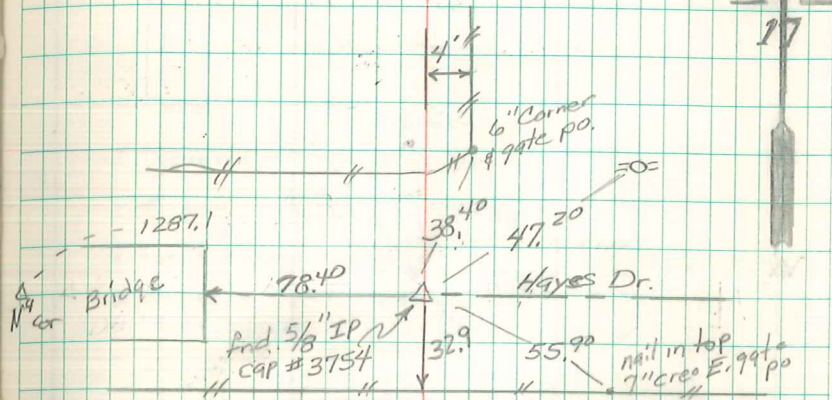
FOUND NORTH CORNER AND NORTH EAST  
 CORNER OF SECTION 17. MEASURED  
 DIST. BETWEEN AS 2574.0 SET  
 70° SPK AT 1287.0 ON LINE.

N<sup>1</sup>/<sub>4</sub> Cor NE<sup>1</sup>/<sub>4</sub> SEC 17 76-21

SET 5/8/85

NOTES: PREGON

PARTY: STONE, MOLL, DUNKIN



Iron Pin on C.M.  
 Found + RETIEd  
 2/28/91  
 VANDERVEER + Pregon  
 Quick,  
 2/16/04 Abie Davis