

Found 2 Grant Rocks 12"x12"x10"  
 & 28"x9"x9" over 2-2" D Tile, one  
 Tile Broken in several Pieces

Lowered 1-2" D Tile in orig. up-Right  
 Position & Placed C.M. over it.

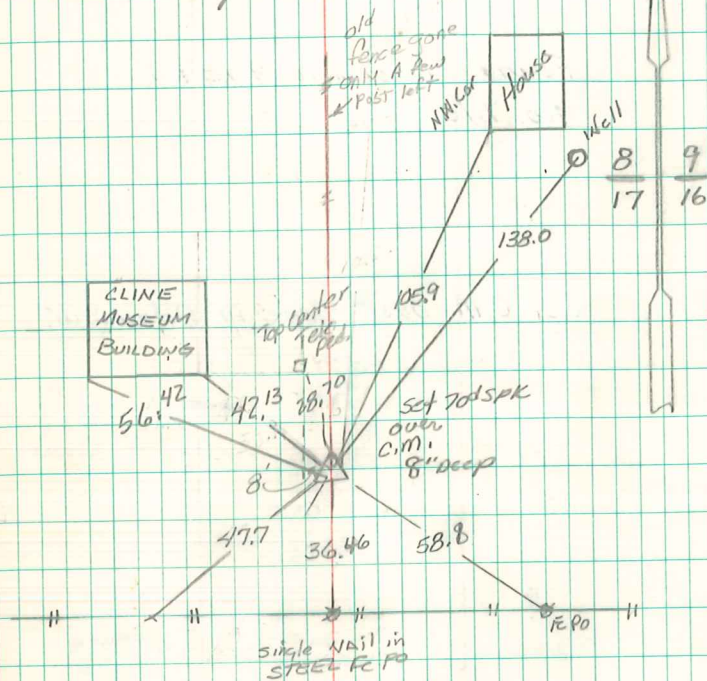
Broken Tile at base of C.M. stones  
 on S. side 6" Deep

C.M. 13" Deep

N.E. Cor 17-76-21

set. 7-3-40

Notes: Wignall



Found and retied  
 4/29/1985  
 Moll, PREGAN + Dunkin  
 set spk over CM  
 8" Deep  
 4/1/97 Abie Davis Found  
 4/13/2000 Dennis Kunze I.D.O.T.