

KAREN SCHWANEBECK, RECORDER  
MARION COUNTY IOWA

Return To: Thomas Land Surveying, LLC \* 6230 90th Avenue, Indianola, IA 50125 \* 515.494.6663

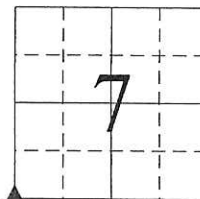
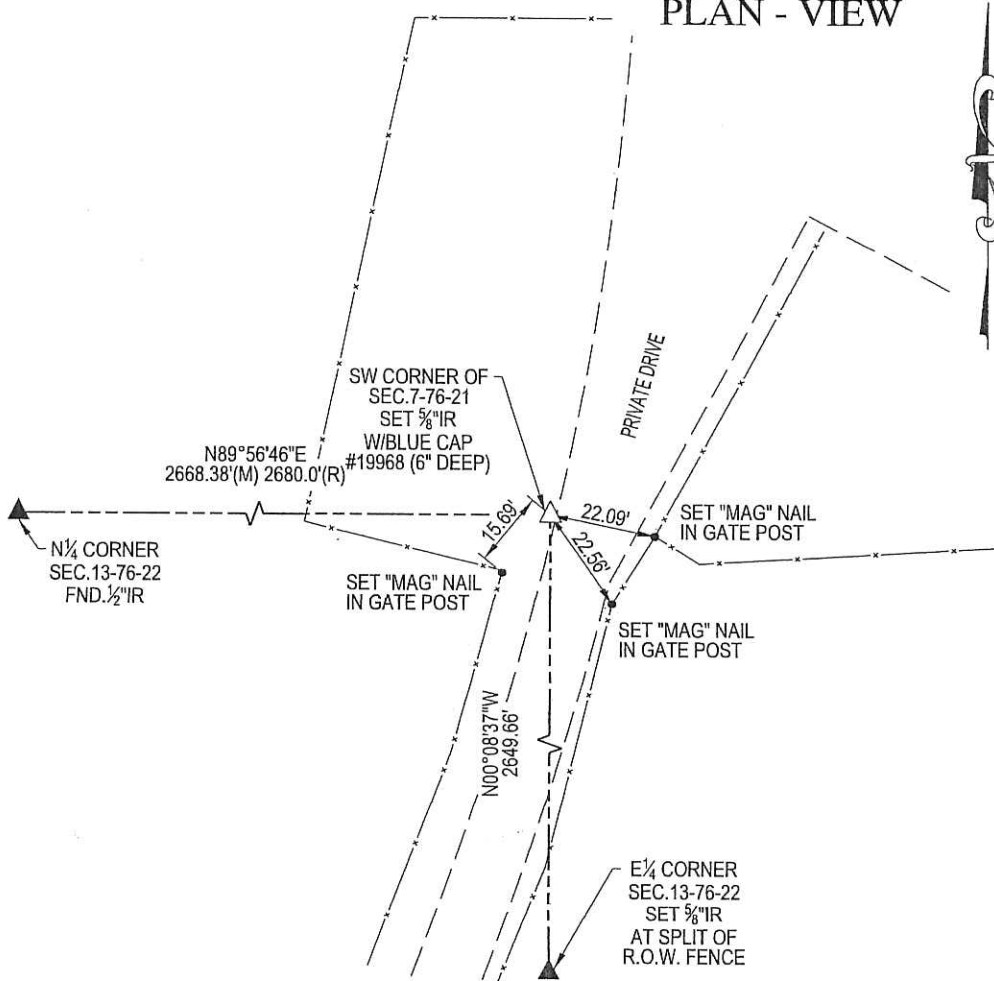
### UNITED STATES PUBLIC LAND SURVEY CORNER CERTIFICATE OF

Land Survey Monuments situated in Section 7, Township 76 North, Range 21 West, of  
the Fifth Principal Meridian, Marion County, Iowa.

Previously recorded in NO PREVIOUS RECORD in the Marion County Recorder's Office.

Monument Description and Remarks: ORIGINAL MONUMENT AND ALL REFERENCE TIES WERE LOST. SET MONUMENT ONLINE WITH  
SPLIT OF RIGHT-OF-WAY AT THE E $\frac{1}{4}$  CORNER OF SECTION 13 AND THE E $\frac{1}{4}$  CORNER OF THE NORTHEAST $\frac{1}{4}$  OF SECTION 13.  
AND ONLINE WITH N $\frac{1}{4}$  CORNER OF SECTION 13 AND THE N $\frac{1}{4}$  CORNER OF THE NORTHEAST $\frac{1}{4}$  OF SECTION 13.  
SET REFERENCE TIES PER CODE OF IOWA. ALL TIES WERE MEASURED PLUMB.

#### PLAN - VIEW



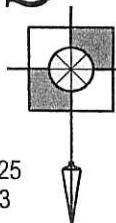
#### LEGEND

- ▲ FOUND SECTION CORNER MONUMENT
- FOUND MONUMENT
- I FOUND CHISELED "X" IN RIGHT-OF-WAY RAIL
- ⊗ FND "X" NAILS IN FENCE POST
- △ SECTION CORNER SET 5/8" I.R. W/BLUE CAP #19968 (UNLESS NOTED)
- SET 5/8" I.R. W/BLUE CAP #19968
- × SET "X" NAILS IN FENCE POST
- I.P. IRON PIPE
- I.R. IRON ROD (REROD)
- (M) MEASURED DIMENSION
- (R) RECORDED DIMENSION
- SECTION LINE
- x-x- FENCE LINE

# TLS

THOMAS  
LAND  
SURVEYING, LLC

6230 90th AVENUE  
INDIANOLA, IA 50125  
TELE.: 515.494.6663



R15700ck-Rg-Thomas Land Surveying

#### SW CORNER OF SECTION 7 - T76N - R21W

IOWA SOUTH STATE PLANE COORDINATE  
N=507,513.9433  
E=1,687,556.4960



I hereby certify that this land surveying document was prepared and the related survey work was performed by me or under my direct personal supervision and that I am a duly licensed Professional Land Surveyor under the laws of the State of Iowa.

Signature: Matthew J. Thomas Date: 07-06-2015  
 Name: (Printed or typed) Matthew J. Thomas  
 License Number 19968  
 My license renewal date is December 31, 2015.  
 Pages or sheets covered by this seal: THIS SHEET

#### Corner to be Indexed

Corners Section-Township-Range  
SW CORNER OF  
SECTION 7 - T76N - R21W

Found Earthenware, Localized to  
12" Area, along edge of old Grader  
Ditch, 24" Below Surface of Ground

Set G.M. over Broken Earthenware  
Placed rock on top of G.M.

1338.0' E. of  $\frac{1}{4}$  Cor  
2680.0' E. "  $\frac{1}{4}$  Cor 13  
2640.0' S. "  $\frac{1}{4}$  " 12  
5280.0' S. " N.E. " 12

24.2' W. of E. R.O.W. Fence  
133.2' S.W. of Tree on N.S. D.F. East  
90.8' N.W. of 42" Elm Tree  
162.1' N.W. of 24" " "  
95.9' N.W. " 18" Triple Elm

N.W. Cor. Sec 18-76-21

16

Set: Oct 15-1940

Notes: Kennedy, Mandell, Frazier &  
Elsberry

