

KAREN SCHWANEBECK, RECORDER  
MARION COUNTY IOWA

Return To: Thomas Land Surveying, LLC \* 6230 90th Avenue, Indianola, IA 50125 \* 515.494.6663

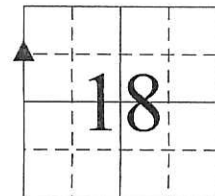
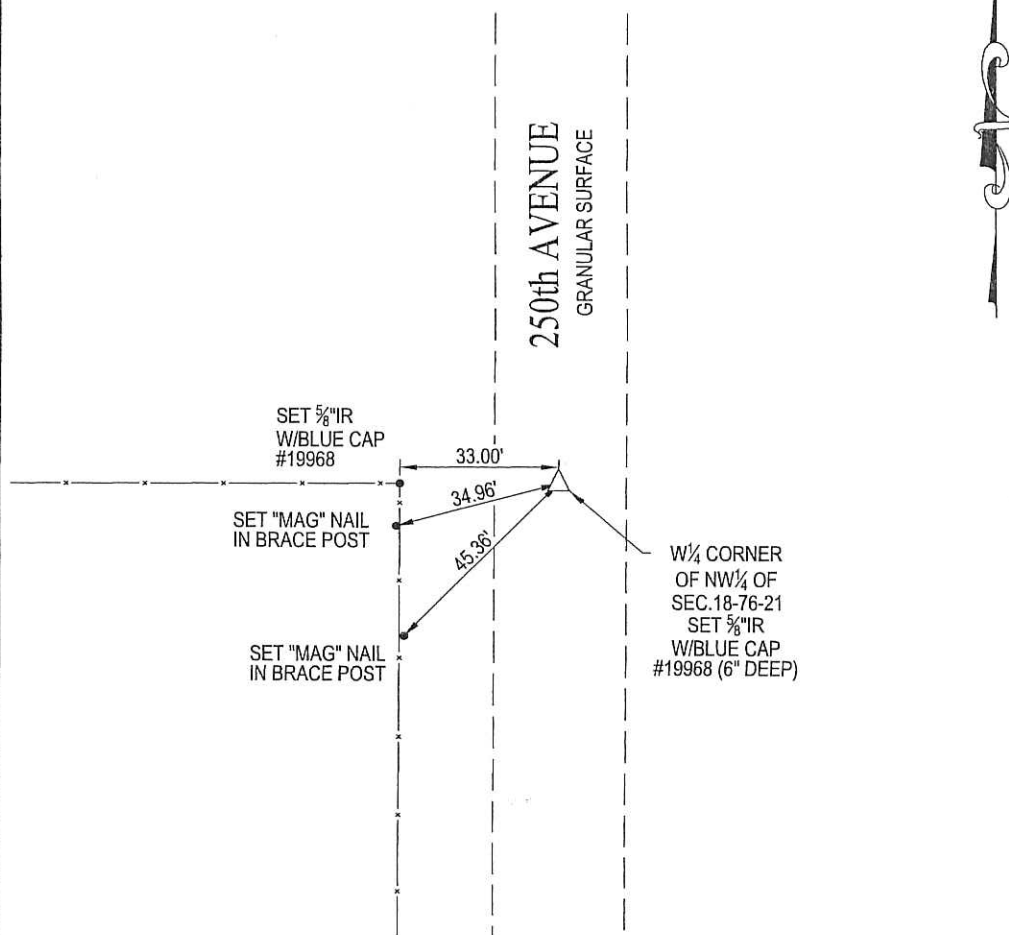
### UNITED STATES PUBLIC LAND SURVEY CORNER CERTIFICATE OF

Land Survey Monuments situated in Section 18, Township 76 North, Range 21 West, of  
the Fifth Principal Meridian, Marion County, Iowa.

Previously recorded in NO PREVIOUS RECORD in the Marion County Recorder's Office.

Monument Description and Remarks: SET MONUMENT AT MIDPOINT BETWEEN THE WEST 1/4 CORNER AND THE NW CORNER OF SECTION 18. SET REFERENCE TIES PER CODE OF IOWA. ALL TIES WERE MEASURED PLUMB.

#### PLAN - VIEW



#### LEGEND

- ▲ FOUND SECTION CORNER MONUMENT
- FOUND MONUMENT
- I FOUND CHISELED "X" IN RIGHT-OF-WAY RAIL
- ⊗ FND "X" NAILS IN FENCE POST
- △ SECTION CORNER SET 5/8" I.R. W/BLUE CAP #19968 (UNLESS NOTED)
- SET 5/8" I.R. W/BLUE CAP #19968
- × SET "X" NAILS IN FENCE POST
- I.P. IRON PIPE
- I.R. IRON ROD (REROD)
- (M) MEASURED DIMENSION
- (R) RECORDED DIMENSION
- SECTION LINE
- x-x- FENCE LINE

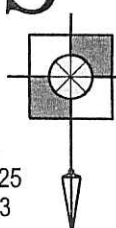
W 1/4 CORNER OF NW 1/4 OF SECTION 18 - T76N - R21W

IOWA SOUTH STATE PLANE COORDINATE  
N=506,189.2283  
E=1,687,559.8180

# TLS

THOMAS  
LAND  
SURVEYING, LLC

6230 90th AVENUE  
INDIANOLA, IA 50125  
TELE.: 515.494.6663



RD 1700 CK - REF Thomas Land Surveying



I hereby certify that this land surveying document was prepared and the related survey work was performed by me or under my direct personal supervision and that I am a duly licensed Professional Land Surveyor under the laws of the State of Iowa.

Signature: Matthew J. Thomas Date: 07-06-2015  
 Name: (Printed or typed) Matthew J. Thomas  
 License Number 19968  
 My license renewal date is December 31, 2015.  
 Pages or sheets covered by this seal: THIS SHEET

#### Corner to be Indexed

Corners Section-Township-Range  
W 1/4 CORNER OF NW 1/4 OF  
SECTION 18 - T76N - R21W