

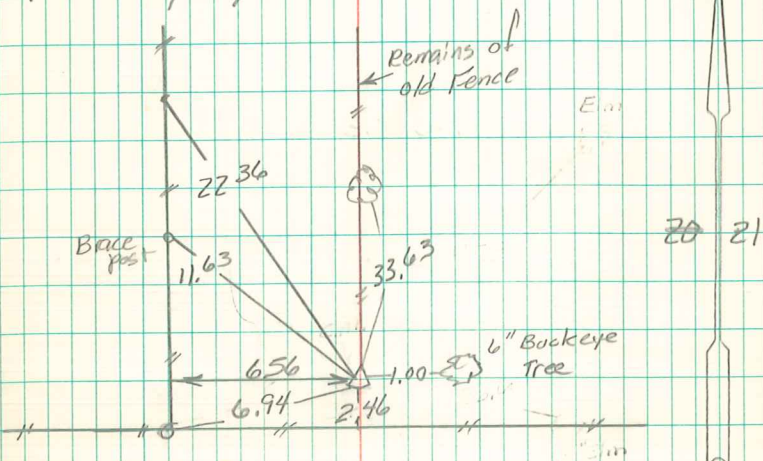
Found sandstone $14 \times 12 \times 4$ "
& 2-2" Horse shoe tile

set c.m. over 1- D Tile &
Placed stone over c.m.

E $\frac{1}{4}$ Cor. 20-76-21

Set 6-27-40

By Nandell, Frazier, Harger
& Notes By Wignall



Found $15 \times 12 \times 4$ " sandstone 6" deep with
scm marked 20+21 below stone. Placed
 $\frac{5}{8}$ " rebar on North side of scm.
Replaced stone over scm. exposed 3"

4/13/2010
Dennis Kurze