



Document 19-2731

Book 2019 Page 2731 Type CORNR Pages 1  
Date 7/02/2019 Time 10:36 AM  
Rec Amt \$7.00

KAREN SCHWANEBECK, RECORDER  
MARION COUNTY IOWA

Prepared by Abie C. Davis, P.E. & L.S., 1428 Oregon St., Knoxville, IA 50138 (641) 842-5863

### UNITED STATES PUBLIC LAND SURVEY CORNER CERTIFICATE OF

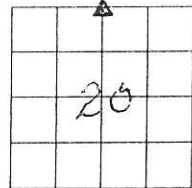
Land survey Monuments situated in Section 20, Township 76 N, Range 21 W, of the Fifth Principal Meridian, Marion County, Iowa.

Previously recorded in Bk 1, Pg 249 & Bk 2, Page 84 in County Recorders Office.

Show reason for preparing this certificate, the evidence and detailed procedures used in establishing the corner positions and monumentation found or placed

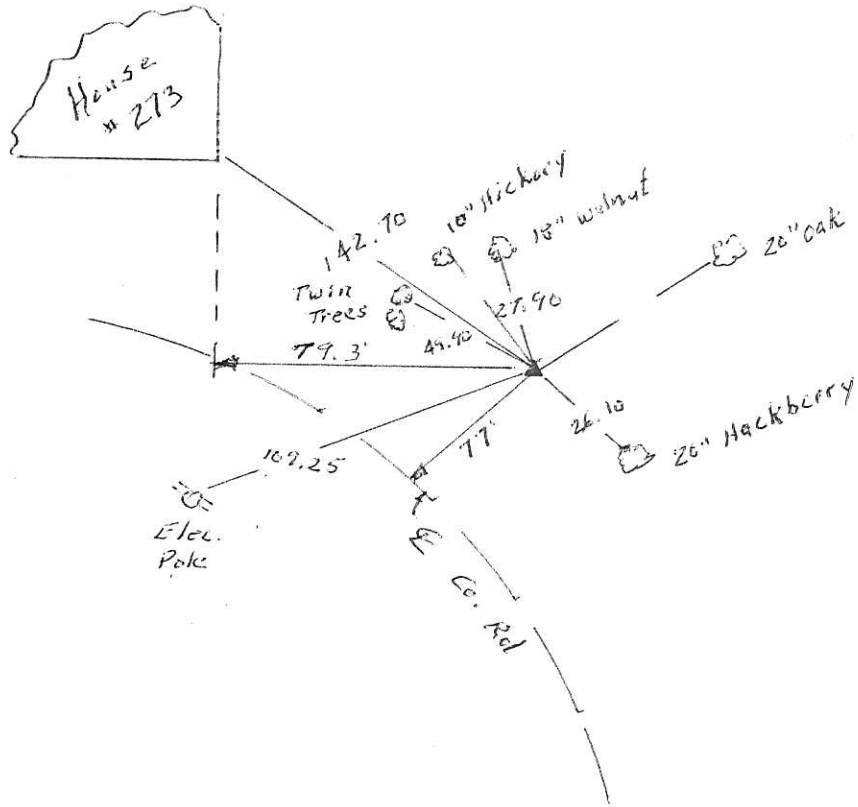
Monument Description and Remarks: Found 5/8" Iron Pin

over CM. Set out new ties and remeasured old ties after 20yrs tree growth.



### PLAN - VIEW

(Show a minimum of three reference ties to durable physical objects, relevant monuments and physical conditions that will enable recovery of the corner.)



I hereby certify that the survey work was completed and this land surveying document was prepared by me or under my direct personal supervision and that I am a duly licensed land surveyor under the laws of the state of Iowa

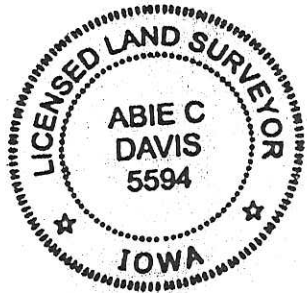
Signature: Abie Davis

Abie C. Davis, P.E. & L.S.

Date: 6/25/19 Reg. No. 5594

My license renewal date is December 31, 2019

SEAL



List Corners to be Indexed			
Corners	Section	Twp	Range
N4	20	76N	21W

Rd \$700 cash - Fee Abie Davis

Found Sandstone 12"x8"x4"  
Mine Rail

set c.m. 25<sup>N.</sup> South of mine Rail  
12" Below Surface.

Stone over c.m.

N<sup>1</sup>/<sub>4</sub> Cor 20-76-21

set - 7-3-40

Notes: wignall

