

2018-1019

Prepared by Abie C. Davis, P.E. & L.S., 1428 Oregon St., Knoxville, IA 50138 (641) 842-5863

UNITED STATES PUBLIC LAND SURVEY CORNER CERTIFICATE

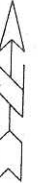
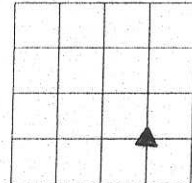
OF

Land survey Monuments situated in Section 21, Township 76 N, Range 21 W, of the Fifth Principal Meridian, Marion County, Iowa.

Previously recorded in N/A in County Recorders Office.

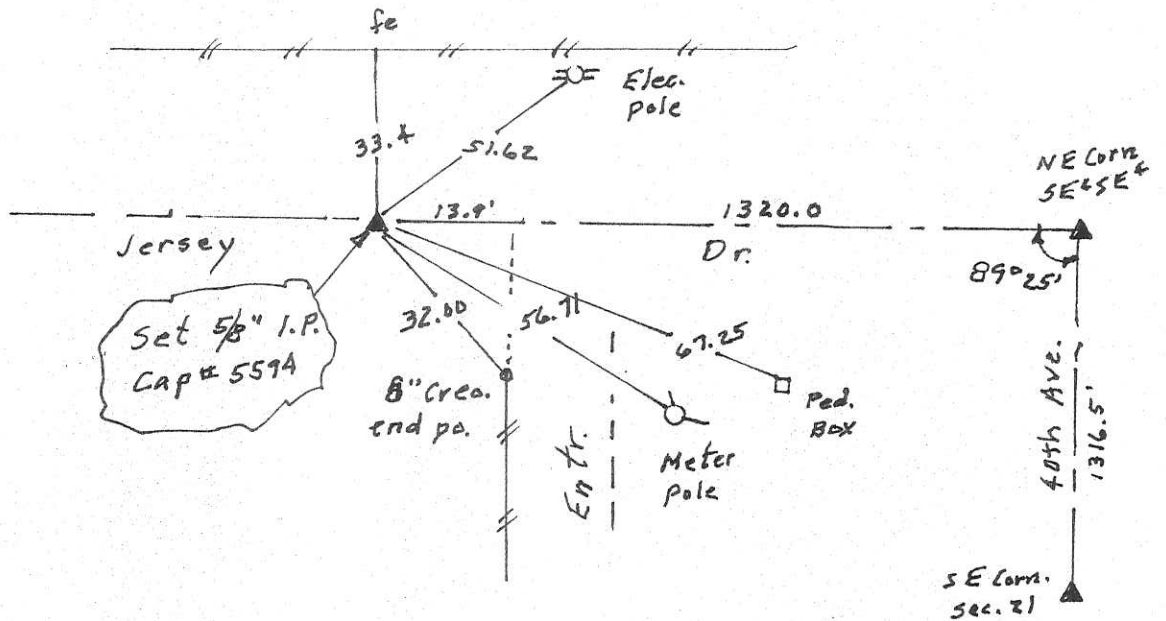
Show reason for preparing this certificate, the evidence and detailed procedures used in establishing the corner positions and monumentation found or placed

Monument Description and Remarks: Set corner at the calculated center of SE⁴ of Sec. 21-76-21 from Iowa D.O.T. survey of Sec. 21 dated April 14, 2000 as record in Book 2, Page 121.



PLAN - VIEW

(Show a minimum of three reference ties to durable physical objects, relevant monuments and physical conditions that will enable recovery of the corner.)



I hereby certify that the survey work was completed and this land surveying document was prepared by me or under my direct personal supervision and that I am a duly licensed land surveyor under the laws of the state of Iowa

Signature: Abie C. Davis

Abie C. Davis, P.E. & L.S.

Date: MAR 16, 2018 Reg. No. 5594

My license renewal date is December 31, 2019

SEAL



List Corners to be Indexed

Corners	Section	Twp	Range
NW Corner	21	76 N	21 W
SE ⁴ SE ⁴			